

Bethel College Mennonite Church is an open and affirming congregation centered in the life and teachings of Jesus. Embracing the divine within each person, we warmly welcome any and all into fellowship without regard to race, ethnic background, gender identity, sexual orientation, ability, economic status, marital status, or age.

Welcome visitors and friends! May you sense God's presence at BCMC. The nursery at the back of the sanctuary is available during worship for families with infants and toddlers.

Are you new to the Bethel College Mennonite Church community? Join Pastor Joanna and other new attenders for a special "getting to know each other" Sunday School session after worship on August 31 in Joanna's office.

To request prayer or a visit, or if a family member is hospitalized, please contact the church office or a pastor so that visits and prayer support can be offered. Names of people receiving medical care are released only by permission of the patient or a guardian/family-member. This is part of the caring network at BCMC, which includes support among members of Sunday school classes and small groups, as well as the Prayer Network and Caring Fund sponsored by the Deacon Commission.

Mennonite Mission Network Prayer Request: MMN requests prayer for the Mennonite Christian Hospital (MCH) in Taiwan, the largest Mennonite hospital in the world, which offers diverse medical specialties and advanced technologies across multiple campuses. Pray that MCH's commitment to serving marginalized people in remote communities will continue to offer well-being to all of Taiwan's people.

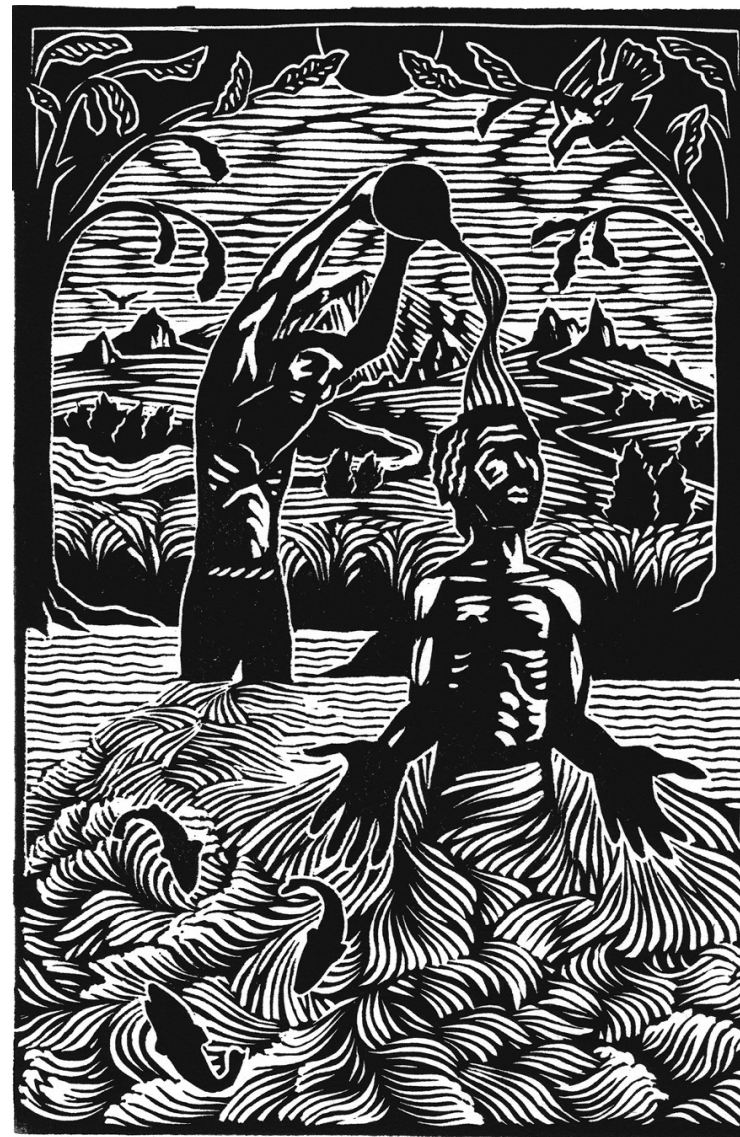
Western District Conference Prayer Request: We pray for protection, wisdom, courage, strength and blessings for our church planters and those who support this work as they build faith communities in difficult times. -WDC Church Planting Commission

Bethel College Mennonite Church, 2600 College Ave., Box 364, North Newton, KS 67117
Phone: 316-283-3667—Fax: 316-283-2079 Email: office@bethelcollegemennonitechurch.org
Website: bethelcollegemennonitechurch.org

- Pastor Joanna Harader, Day off: Monday; **1887 Café Hours Wednesday, 8-10 a.m.**
Cell phone: 407-201-0503; Email: joanna@bethelcollegemennonitechurch.org
- Pastor Nathan Koontz, Day off: Wednesday
Cell phone: 316-212-4593; Email: nathan@bethelcollegemennonitechurch.org
- Elizabeth Schmidt, Pastor of Congregational Care
Email: elizabeth@bethelcollegemennonitechurch.org
- Office/Facilities Manager: Monica Lichti, Email: office@bethelcollegemennonitechurch.org
- Faith Formation Coordinator: Jill Robb—Email: jill@bethelcollegemennonitechurch.org
- Youth Coordinator: George Leary—Email: george@bethelcollegemennonitechurch.org
- Music Coordinators: Verlene Garber and Will Wiebe-Friesen
- Chancel Choir Director: Joel Garber • Chancel Bells Director: Verlene Garber

Bethel College Mennonite Church

August 31, 2025



Baptism of Jesus (Matthew 3)

MATTHEW REGIER

Our faith in a God of love leads us, by the power of the Spirit,
to follow Jesus in doing justice, loving mercy,
and walking humbly with God.

BETHEL COLLEGE MENNONITE CHURCH
August 31, 2025

Christ Candle Lighting

Centering Music *Savior of the Nations, Come, BWV 659* [VT 214] (J.S. Bach)
Will Wiebe-Friesen

Welcome Wynn Goering

*Hymn *As I Went Down to the River to Pray* VT 453

Children and Youth Conversation Judy Harder

Worship Music *Concerto for 2 Violins in D minor, BWV 1043*
(Johann Sebastian Bach, I. Vivace)
Violinists: Daniel Colwell & Angel Garcia
Pianist: Ken Rodgers

Scripture Reading with hymn Matthew 3 David Kreider
Prepare Ye the Way of the Lord VT 219
[Please sing as prompted]

Sermon *Fruit Worthy of Repentance* Joanna Harader

*Hymn *Crashing Waters at Creation* VT 441

Welcoming New Members Elizabeth Schmidt
Introduction to Church Membership VT 959
New Members: David Mathis and Jay Newton
Membership Covenant Questions
Welcoming New Members VT 961

Prayers of God's People

*Hymn *Comfort, Comfort, O My People* VT 212
Those with August birthdays are welcome to come forward during this hymn to receive a birthday blessing.

*Benediction

Postlude *Prelude in G Major, BWV 550* (J.S. Bach)

*You are invited to stand ■ VT—*Voices Together* ■ Audio visual— Ken Lamp

We extend a special welcome to those who are visiting Bethel College Mennonite this morning. Thank you for sharing in worship! If you would like us to keep in touch, please scan the QR code and fill out the visitor form.



It's that time of year for our Sunday School year to begin and our youth need your help to teach Sunday School! Faith Formation is looking for teachers and helpers for the 2025-2026 school year. If you feel the nudge to spend an hour with our amazing elementary or middle/high school youth please email Jill Robb at jill@bethelcollegemennonitechurch.org.

Save the date of Sept. 14 for a Congregational Meeting during the Sunday School hour followed by a fundraising lunch served by the Senior High Youth Group.

Messy Church starts September 10! We will gather the second Wednesday of each month at 6 p.m. to share a meal and a time of all-age, interactive worship. The Faith Formation Commission is excited to offer Christ-centered, all-age worship that values creativity, hospitality, and celebration. You can learn more about the Messy Church USA organization on their website. Contact Joanna Harader or Jill Robb with any questions. (Note that we will not be charging a fee for these Wednesday evening meals. There will be a basket out and donations toward the cost of food are welcome. Please bring your own table service which will help with cleanup.)

The Education Service and Scholarship Committee (ESSC) thanks the congregation for supporting the Bethel College Scholarship fund, especially in recent weeks. All but \$100 has been received toward the goal of funding scholarships for all our Bethel College students this academic year. Thank you — Karen Ediger, Brad Kohlman, Margaret Toews (ESSC)

Whether a seasoned veteran or new to the BCMC family, you are invited to participate in the community life of BCMC by joining a small group! Small groups are flexible, fun, community building opportunities that connect folks from different (and similar) circles together to play and pray with each other. They don't have a set schedule - gatherings can be built based on the availability of the members, and there is no "agenda" (although some ideas for ways to connect can be provided). If you are interested in being part of a small group, please reach out to Megan Kohlman (meganbkohlman@gmail.com). She would appreciate responses by September 7 so that new group(s) can begin this fall! Thank you for helping build community at BCMC!

Climate Change Conference virtual meeting: The Witness Commission invites you to a virtual seminar on climate change, sponsored by Central Seminary and the Buttry Center for Peace and Nonviolence in the KC metro area. The virtual meeting is Sat., Sept. 20, 9 to 11:45 a.m., and is free for online guests. The seminar focuses on faith responses to climate change. Join members of the Witness Commission in Room 14, Sept. 20, to hear the keynote speakers at this seminar.

In February of this year, Pastor Elizabeth let us know of her plans to retire this fall. Sept. 28, 2025, will be her final Sunday on the pastoral staff here at Bethel College Mennonite Church. We are deeply grateful for her ministry here and pray for God's guidance and blessing as she enters a new season of life. Details for a farewell reception will be forthcoming.

A pastoral search committee has been formed to fill an opening created by Elizabeth's upcoming retirement. Megan Leary will chair, Karen Ediger, Mary Ellen Hodge, Mara Oswald, and Francis Toews are additional committee members. They will soon begin their work alongside Western District Conference, our staff, and the board. Brad Kohlman will serve as a liaison between the committee and the board/congregation. Please keep the committee members in your prayers as their work begins.

Bethel College Announcements

- **Sat., Sept. 6:** Kauffman Museum bird walk, 7 a.m. start time in the museum parking lot at the corner of Main and 27th streets. Experienced birders lead a walk of 1-1.5 hours in Chisholm Park and on Sand Creek Trail.
- **Fri., Sept. 12:** Bethel College music faculty recital, 7 p.m., Administration Building chapel with a reception to follow.
- **Now in the Regier Gallery** in Luyken Fine Arts Center at Bethel College – “Decororator,” works by Jordan Buschur, through Sept. 25. Gallery hours are Mon.-Fri., 9 a.m.-5 p.m., Sun. 2-4 p.m.
- **Sat., Oct. 4:** (during Fall Festival): Internationally renowned theologian Miroslav Volf, Yale University, will speak at Bethel College Mennonite Church, 10 a.m.
- **Sun., Oct. 19, and Mon., Oct. 20:** Dr. Kat Hill, a religious and cultural historian from Scotland, will give the annual Menno Simons Lectures [these dates are different from some previously printed material]
- **Sun.-Tues., Nov. 2-4:** The biennial Worship and the Arts Symposium will focus on homiletics (preaching) with special guest Dr. Luke Powery from Duke Divinity School at Duke University. The symposium will also feature an art exhibition by Merrill Krabill and the fall choral concert “Bethel Sings.”

All events are free and open to the public.

The Week at BCMC: August 31—September 7, 2025

Sunday, August 31, 2025

Worship 9:30 a.m. Worship with sermon by Joanna Harader

YouTube Link: <https://youtube.com/live/xa1XxbfY-is?feature=share>

Monday, September 1, 2025—Labor Day—Church will be locked; office closed

Tuesday, September 2, 2025—Church office will be closed

Wednesday, September 3, 2025

8-10 a.m. Pastor Joanna will be at the 1887 Café on the Bethel College campus. Stop in and visit!

4:30 to 6 p.m. Community Playschool Open House—Basement

7:30 p.m. Chancel Choir rehearsal—Sanctuary

Thursday, September 4, 2025

9-11 a.m. Community Playschool First Day of School

6:30 p.m. Chancel Bells rehearsal—Room B7

7 p.m. Church Board meeting—Room 14

Sunday, September 7, 2025

9:30 a.m. Worship with sermon by Joanna Harader; music by Chancel Choir

3 p.m. Max Ediger shares about his life and work in Cambodia—Fellowship Hall

Upcoming Memorial Services:

- September 15, 11 a.m. Ilene Schmidt Memorial—BCMC
- September 20, 10 a.m. Betty Schmidt Memorial—Kidron Hall

Save the date for Max Ediger Visit. Max Ediger, of Pursat Province, Cambodia, is traveling to the U.S. for a visit in early September and will be coming to Bethel College Mennonite Church on Sunday, September 7. Max will share the Children's Conversation during Sunday morning worship. That afternoon, at 3 p.m., in the BCMC Fellowship Hall, Max will share about his life and recent work. We look forward to this time together with our most distant member!

BCMC Offering for August 24: General \$6,927; Sr Hi Youth Fund \$100; Jr Hi Fund \$30; Bethel College Scholarship Fund \$150; Kitchen Fund \$14.61; Betty Schmidt Mem. \$125.

All people aged 16-25 are invited to participate in three Sunday School hour sessions on Creating a Conscientious Objector File. In the event of a draft, a c.o. file is a great support for those who do not wish to participate in armed military service. Sessions will be held after worship today and September 21, and 28 in the chapel. We will go over both theological and practical considerations for creating a file and have time to work on materials for your files. For questions, contact: Joanna Harader (joanna@bethelcollegemennonitechurch.org)

Statements of Faith of New Members to BCMC

David Mathis—Transferring from Peace Mennonite Church, Lawrence, KS

I was baptized at the age of 10 in Tonganoxie, KS. Even then, I was recognizing God's movement and presence in my life, though from an immature perspective. Several years later, I chose to be baptized again in Bonner Springs, KS, believing I had developed a better understanding of the implications of this act of faith. My parents began moving into a more fundamentalist direction in response to their faith journey and most of my growing up, formative years were spent in the Church of Christ. I am grateful for that part of my faith walk because this group places a high value and emphasis on study of scripture. Indeed, I believe this early focus on scripture study, including memorization, helped create a solid foundation for me from an early age.

As I grew older, especially in my teen years when Vietnam was raging, I began studying the Jesus teachings about our call to peace as followers of Christ. This seeming countercultural way of thinking was in tension within the tenets of the church of which I and my family belonged. By the time I turned 18, however, after registering for the draft as required by law, I made the decision to meet with my local draft board to declare my desire to be classified as a conscientious objector. I married Linda Heidlebaugh when I was 19 in 1972, and together, we were blessed with 3 children. In 1984, I received and accepted a Hillsboro, KS-based job offer. It was there that Linda and I joined the First Mennonite Church. Discovering Anabaptist theology, especially the teachings on Christ-centered peace was thrilling to me and I cherish that discovery and, by association, being part of Mennonite Church, USA. Linda passed away in 2013. I am grateful she was able to know each of our 7 grandchildren before she died.

I moved to Lawrence, KS in 2019 and met my partner, Cheryl Harader there. She and I had a blessing ceremony in 2021. After struggling for some years after the loss of Linda, Cheryl is proof positive to me that God never left me, even during the dark times after Linda's passing. Soon after moving to Lawrence, I became a member of the Peace Mennonite Church. I am grateful for the opportunity to now become part of BCMC. I greatly value the Christ-centered worship I have experienced there. I am grateful that the core mission and worship style of BCMC very much aligns with this stage of my own spiritual journey.

Jay Newton—Joining by Affirmation of Faith

My beliefs and values are Christian, reflecting the values of the family and community I which I grew to adulthood. Those beliefs and values are founded in my understanding of the biblical teaching of Jesus being a loving relationship between all people. I follow Jesus as my guide and role model for non-violence, justice, and peace. I was baptized in 1956 in the Lutheran church. I associated with the Methodist church as an adult. When I came to Newton in 1968 to become city administrator, I had never been around a community with Mennonites or Anabaptists. Living and working in Newton/Harvey County, over time I met people

and noticed some differences. I volunteered and served on the Board of Prairie View Mental Health Center, served on the Bethel College advisory board, and served in other faith-based community organizations with friends and associates. These experiences guided me and helped me grow as a Christian. Being a disciple of Jesus means living in service of helping, giving, and helping create a community of justice. Loving God and loving the neighbor is done by joining with others to participate with time and resources to serve people, to avoid conflict and build consensus. The church is a place and congregation of people, generally having a common set of beliefs, meeting to worship, and support themselves and others in following those beliefs. I hope to grow in my Christian love for others through participation at BCMC. I look forward to a relationship of like-minded believers.

Last Sunday we packaged approximately 350 school kits in about 40 minutes with the help of around 50 volunteers. With all of those numbers that deserves a hearty THANK YOU!!

Worship is a central spiritual practice for us at Bethel College Mennonite Church, and we rely on many people within our church community to make it happen! The Worship Commission is hosting a worship participant workshop on Sat., Sept. 27, from 2 to 4 p.m. at Bethel College Mennonite Church. As a large group, we will briefly talk about BCMC worship and then break into smaller groups to offer input and support in particular areas. This is for everyone interested in worship leading, scripture reading, leading children /youth conversation, or being an usher or greeter--whether you have done it before or not. All are welcome!

Life Enrichment is a series designed for adults age 60 and over. Sessions are in the Bethel College Fine Arts Center, Krehbiel Auditorium, on Wednesdays, 9:30—11:50 a.m. Next session: **September 3** 9:30 a.m. "Experiences Traveling to Tbilisi, Georgia," Kris Schmucker, collections manager at Kauffman Museum 10:50 a.m. "Long-Lost Sisters," Richard Hofer, retired aerospace materials and processes engineer, Hillsboro

The Swiss Mennonite Cultural and Historical Association annual banquet will be Oct. 18, 5 p.m. at the Burrton City Auditorium (203 N. Burrton Ave., Burrton). Peter Buller, recent Bethel College graduate, will speak about his experience this summer at Reba Place in Chicago, connecting with bigger themes about our role as Mennonites in the world. Musical entertainment will be provided by the Schwisters. RSVP by Oct. 11 to Dave Stucky at bigdstucky@gmail.com or text or call 620-532-4408. The cost of the banquet is \$25 and can be paid at the door or online at www.swissmennonite.org.