

Prayer Requests

Mennonite Mission Network: Join MMN in praising God for strong peacebuilding ministries in South Korea and throughout the Northeast Asia region. Pray for God's Spirit to move among leaders as they discuss the future of North and South Korea, and nuclear disarmament.

Western District Conference: Pray for the WDC Church Planting Commission as they encourage new church initiatives and for Associate Conference Minister Byron Pellecer as he coaches church planters in their ministry.

This congregation: Pray for our congregation as we enter this time of pastoral transition and for the Search Committee as it begins its work to find an Associate Pastor of Faith Formation.

To request prayer or a visit, or if a family member is hospitalized, please contact the church office or a pastor so that visits and prayer support can be offered. Names of people receiving medical care are printed in the BCMC bulletin only by permission of the patient or a guardian/family-member. This is part of the caring network at BCMC, which includes support among members of Sunday school classes and small groups, as well as the Prayer Network, Visitation Team, and Caring Fund sponsored by Deacon Commission.

Bethel College Mennonite Church welcomes into fellowship and membership all persons who confess faith in Jesus Christ, without regard to their race, ethnic background, gender, age, sexual orientation, education, ability, and other factors which give rise to discrimination and marginalization.

Bethel College Mennonite Church, 2600 College Avenue, Box 364,
North Newton, KS 67117 Phone: 316-283-3667 Fax: 316-283-2079
Email: office@bethelcollegemennonitechurch.org

Website: bethelcollegemennonitechurch.org

Church office hours: 9 am–12:30 pm Mon–Fri; 1:30 –5 pm Mon—Thur

Church office is closed Friday afternoons

Building is locked weekdays at 5 pm unless evening activities are scheduled

Saturdays—building is locked; Sundays—building is locked at 2 pm

Notary public service is available in the church office

Pastor: Dawn Yoder Harms, Day off Monday—Phone: 316-283-3667
cell phone: 316-212-1847; Email: dawn@bethelcollegemennonitechurch.org

Associate Pastor for Pastoral Care: Susan Wheeler; Day off Friday
cell phone: 316-706-0887; Email: susan@bethelcollegemennonitechurch.org

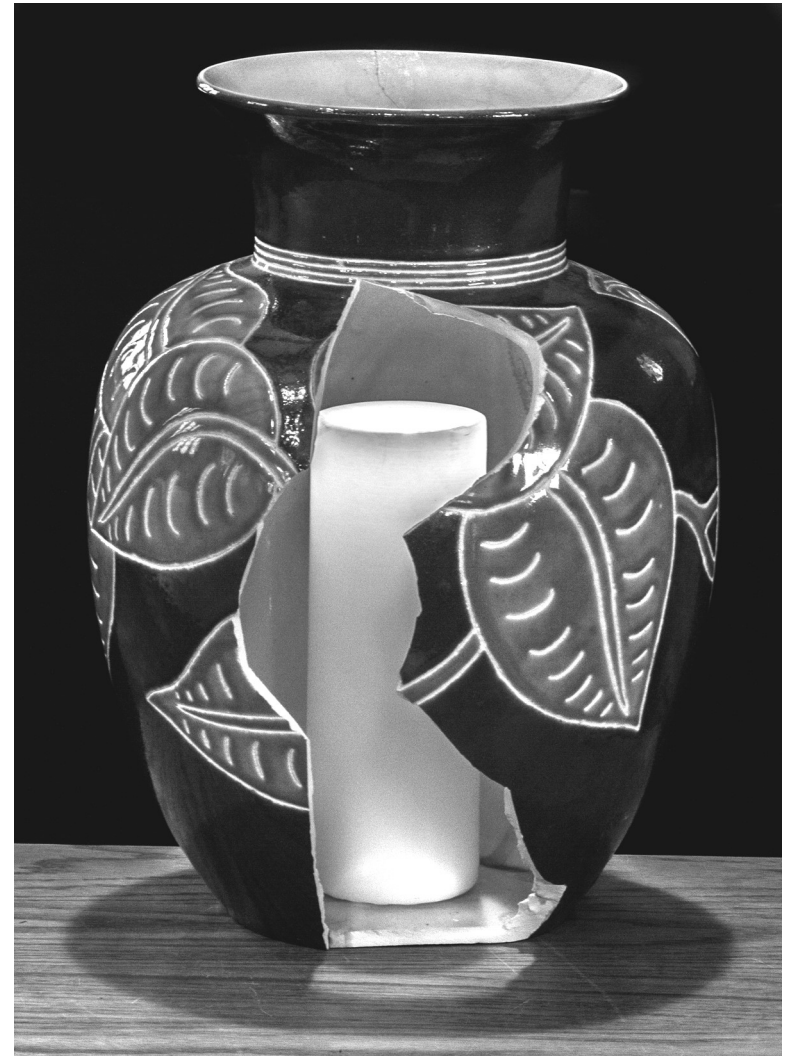
Admin. Assistant: Monica Lichti, office@bethelcollegemennonitechurch.org

Custodian: Michael Crawford, 316-727-9840; day off Tuesday

Music Coordinator: Barbara Thiesen **Chancel Bells Director:** Vada Snider

Menno Ringers Director: Suzy Burch **Chancel Choir Director:** William Eash

Junior Choir Director: William Eash



Bethel College Mennonite Church
June 24, 2018

**THINGS THAT MAKE FOR PEACE:
Justice**

GATHERING

Lighting the Christ Candle

*During the prelude, please observe a time of silence
as we open ourselves to God's presence among us.*

Prelude *Sometimes I feel like a motherless child* arr. Tatgenhorst
Intermezzo Brahms
Pat Friesen

Welcome and Call to Worship John Kliewer

*Hymn of praise *I'll praise my Maker* **HWB 166**
(children come forward during hymn)

LISTENING FOR GOD'S WORD

Children's conversation Glen Ediger

Scripture reading Isaiah 58:6-9; Luke 4:16-19 Valetta Seymour

Worship music *What does the Lord require of you* (STS 54)
Let justice roll down like a river (STS 33)
[On STS 33 please join in on the refrain]
Colleen White, Anna Wedel, Dawn Yoder Harms
Pat Friesen, piano

Reflections *Making peace with justice*
Duane Friesen, Dwight Platt, Doug Siemens

RESPONDING IN FAITH

*Hymn *Jesus Christ is waiting* **STJ 30**

Prayer of God's people

Offering

*During the offering, please sign and pass the friendship register in
your pew. When all have signed, return it to the first person.*

Offertory *Fairest Lord Jesus* arr. Dale Wood
Pat Friesen, piano

*People with June birthdays come forward for a blessing,
please bring a "Sing the Story" songbook*

*Dedication hymn *Fill now our life, O Lord* (verses 1 and 3) **STS 107**

*Dedication prayer

SENDING

*Sending hymn *I bind my heart this tide* **HWB 411**

*A Franciscan Benediction

*Benediction response

*Postlude

*All who are able are invited to stand

HWB = Hymnal: A Worship Book (in rack)
STS= Sing the Story (in rack) **STJ=Sing the Journey** (at end of bench)

We light the Christ candle to welcome God's presence among us. Sent out from worship, we carry the light of Christ with us into the world.

Welcome visitors and friends! May you sense God's presence at BCMC. Personal hearing devices are at the north sanctuary entrance. The nursery at rear of sanctuary is available during worship for families with infants and toddlers. Following Children's conversation, children receive activity bags to use during worship (return to baskets at the entrance as you leave).

Thank you to Weldon Schloneger for the picture of the broken vessel on the bulletin cover.

 **Youth events for your calendar:**
July 21 - 28: DR18 @ Rehoboth Christian School (Gallup, NM)

The 1st Annual Kansas Steel Pan Workshop participants will be presenting a concert today, 2:30 pm, at Memorial Hall on the campus of Bethel College. No admission charge. Hope to see you there.

Kidron Bethel Village invites you and your family to the annual Fireworks Extravaganza July 4, 7 pm. Enjoy live music, games, food and fireworks. 3001 Ivy Dr. , North Newton, KS 67117

Everence will hold a retirement workshop series this summer, starting with *Your Medicare options* July 2, 6:30 pm to inform about the various Medicare plans and what they cover; plans that supplement Medicare; and enrollment details and deadlines. Workshop will be presented by Everence staff and held at the Everence office, 3179 N. Main St., North Newton. Reserve a spot soon by contacting Michelle Ramer at (316) 283-3800; (877) 467-7294 or michelle.ramer@everence.com.

Over the years our hymnals have aged. They are worn and tattered. The new collection of hymns that has our favorites, both old and new will be in a worship and song collection entitled *Voices Together*. Everence and Mennonite Central Committee US have partnered with MennoMedia to make this collection affordable for congregations. If you wish to contribute to this effort, the matching gift campaign is called "Voices Together, Giving Together. Every dollar you give will be doubled. You can donate by going to: voicestogetherhymnal.org

Dove's Nest and Mennonite Women USA are partnering to sponsor a summer event: *Empowering Women: Claiming Healthy Personal Boundaries* July 26-27 in Omaha, NE. This will resource women and girls (age 13-18) with supporting funds from the Schowalter Foundation. For information and registration: <https://dovesnest.net/Claiming-Healthy-Personal-Boundaries>

Smart Living, Simple Money is a podcast produced by and for young adults, sponsored by The Mennonite, Inc., and Everence focusing on how financial decisions impact, and are impacted by, our faith, values and daily lives. Each episode is built around personal stories, expert information and practical tips for managing everyday finances, with 4 episodes in the first season. Topics include debt, budgeting, big purchases, and retirement savings. For more information see smartlivingsimplemoney.com

Mennonite Church USA invites you to take part in the Journey Forward process by using the newly released "Pathways" study guide. "Pathways" invites you and groups to engage in studying Scripture, singing, praying, storytelling, exploring Anabaptist history and values, and discussing how you see God working in your lives. <http://mennoniteusa.org/journey-forward/>

The Next Week at BCMC: June 24—July 1, 2018

Sunday, June 24, 2018

10:30 am Fellowship Time in the Gathering Place with coffee/water/tea

10:50 am Faith Formation—Visitors welcome!

Sunday School for children and youth will be on hiatus until August.

- Agape—Fellowship Hall
- Bible Study—Rm 14—On hiatus for the summer
- Catacombs—Rm B5—*Into the Summer break*, snacks, drinks, informal conversation
- Fellowship—Rm B7
- Fine Arts—Rm 24
- Issues & Christianity—Rm 23
- Mosaic—Rm 20—Sermon reflection and other current topics
- Open Circle—Rm 21—Worship reflection and response
- Seekers—Rm 28—*Science and Faith*, Rev. Kristin Galle and Rev. Dr. Brent Hampton—All are invited
- Sojourners—Chapel—On hiatus for the summer

2:00-4:00 pm Celebration in the Fellowship Hall in honor of Harold Thieszen's 90th birthday — All are invited!

Monday, June 25

2:30 pm BCMC worship DVD—Kidron Bethel Health Care

Tuesday, June 26

12:45 pm BCMC worship DVD—Kidron Bethel Assisted Living

7:30 pm Search Committee—Rm 14

Wednesday, June 27

10:00 am Bulletin announcement deadline

4:00 pm Staff Congregation Relations Committee—Rm B7

Thursday, June 28

7:00 pm Deacon Commission—Rm B7

Sunday, June 24

9:30 am Worship with sermon by Chuck and Bonnie Neufeld

10:30 am Fellowship Time in the Gathering Place

10:50 am Faith Formation

Today in the Seekers Sunday school class Rev. Dr. Brent Hampton, minister of the Brenham Presbyterian Church, Brenham, TX and Rev. Kristin Galle, a minister with the United Church of Christ will speak about how faith and science interact and can mutually inform each other. "Resting upon the assumption that human life is composed of that which is both empirical and transcendental, we will look at one of the modern historical causes of the divide between Science and Faith—Darwin's theory of evolution. We will then explore some of the theological implications and questions surrounding incorporating science into our theological thinking and Christian life." All are invited.

In the spirit of “making peace with justice,” the Witness Commission invites you to consider an opportunity to sign or write a letter to Kansas legislators, asking them to actively pursue the reunification of children and families separated from each other at the Mexico border during the last six weeks. The letter is available in the back of the sanctuary following worship.

Please be in prayer for those receiving medical care this week: Dorothy Nickel Friesen, Newton Medical Center; Kalib Robb, Kansas City Medical Center; Alice Suderman, Newton Medical Center; Elsie Flaming, Via Christi St. Francis Medical Center, Wichita

Staff: Pastor Dawn Yoder Harms is out of the office June 25-July 4.

If you are in the hospital and would like pastors to be informed, please notify the church office, as area hospitals do not routinely notify pastors of hospitalizations.

You are invited to a 90th birthday celebration for Harold Thieszen, today, June 24 from 2-4 pm in the BCMC Fellowship Hall. No gifts required, come help Pastor Harold celebrate!

Workshops for right and left-brained folks at the Western District Annual Assembly July 27-28 include: Centering Prayer, Praying through Art, What is the Good News: A Biblical Overview, Journey Forward (follow-up from MC USA convention), and Ethical Investing, among others.

Needed: Six more BCMC delegates for the WDC Annual Assembly, July 27-28 at Tabor and Eden Mennonite Churches, with featured speaker Bryan Moyer-Suderman. BCMC reimburses delegate registration fees. Please contact Francis Toews if you have questions or interest in participating as a delegate. Registration deadline is July 13. More details and registration information are posted at: <http://mennowdc.org/annual-assembly/#2018annualAssembly>

June 17 at BCMC Attendance: 225. General Fund \$7,970.67; Living Stones \$1,000; Plant Fund \$460; Sr Hi Youth \$200; Gen Fund 2019 \$9,241.13; *Rejoice* \$88.50; BCMC's Mennonite Camping Scholarship Fund \$30.20; Transfer-Sunday School \$50; Bethel College Scholarship Fund \$150.

June is Torture Awareness Month. The National Religious Campaign Against Torture, a coalition of over 300 diverse religious organizations, mobilizes people of faith to end torture in U.S. policy, practice and culture. You can find more information about NRCAT and ideas for how to join in this work at www.ncrat/orange.

Camp Mennoscah : online: campmennoscah.org or 620-297-3290

- **Summer youth camps** are in full swing with the theme of *Beyond Belief: The Universe of God*. There are still openings for most camps. Senior Highers--keep registering on the wait list so that they know you want to come. If camp can't find you a space, they will return all fees paid. Register online at campmennoscah.org!
- **Camp is seeking kitchen helpers** for summer youth camps for July 15-21. Parents receive a camper discount up to full camp fees.
- **Family Weekend is June 30-July 1**, a weekend focused on time to spend with family and friends. Register online or call.

Supplies are running low in the Mennonite Central Committee Material Resources Center in North Newton: Current material resources needs are: shampoo for relief kits (1-2 bottles, totaling more than 20 oz), toothbrushes for relief and hygiene kits (in original packaging), small, metal pencil sharpeners (one or two holes) for school kits, dark colored hand or bath towels for hygiene and relief kits. Visit mcc.org/mrc/kits for full kit information and from there click through to our Amazon Wish List for easier shopping and shipping. Bring or ship kit items to MCC Central States, 121 E. 30th, North Newton, KS 67117. Contact katemast@mcc.org or call with questions at 316-283-2720.

WDC Immigration Task Force invites anyone from WDC congregations to the Immigrant Family Support Network Forum, “Welcoming the Stranger: Individuals and Churches” on June 30, 9 am-12:30 pm at First Presbyterian Church, 525 N Broadway St, Wichita. Information about a program of accompaniment of immigrants based on a model from St. Louis and congregational experiences in providing care for refugees, English for Speakers of Other Languages (ESOL) classes and sanctuary will be presented. Shalom Mennonite Church (Newton) representatives will share their church's immigration ministry story. For details, email: FEhmke51@gmail.com.