

Prayer Requests

Mennonite Church USA: Praise God for Alfonsina and José Oyanguren, who live and work in the Argentine Chaco through Mennonite Mission Network. Pray for the outreach of the churches they serve as the movie *Jesus* has recently been dubbed in the Toba Qom language.

Western District Conference: – Pray for the pastors of Western District Conference who will be meeting for a Pastors Day Apart on Thursday, October 30 – “Cultivating an Incarnational Church.”

This congregation: Give thanks for the generosity of volunteers who give their time to serve in organizations and activities around this community.

If you would like to request prayer or a visit, contact the church office or one of the pastors. The Prayer Network and Visitation Team are ministries sponsored by the Deacon Commission.

Bethel College Mennonite Church welcomes into fellowship and membership all persons who confess faith in Jesus Christ, without regard to their race, ethnic background, gender, age, sexual orientation, education, ability, and other factors which give rise to discrimination and marginalization.

Bethel College Mennonite Church, 2600 College Avenue, Box 364
North Newton, KS 67117

Phone: 316-283-3667

Fax: 316-283-2079

Email: office.bcmc@sbcglobal.net

Web site: bethelcollegemennonitechurch.org

Church office hours: 9:00 a.m. – noon on Mon – Fri; 1:00 – 5:00 p.m. on Mon – Thurs.

Building is locked daily at 5 p.m. unless evening activities are scheduled.

Notary public service is available in the church office.

Pastor: Heidi Regier Kreider, heidi.bcmc@sbcglobal.net

Home phone 284-0448, day off is Friday

Associate Pastor for Pastoral Care: Susan Wheeler, susanmwheeler@gmail.com

Home phone 620-327-2295, cell phone 316-706-0887; day off is Monday

Associate Pastor for Faith Formation: John Tyson, john.bcmc@sbcglobal.net

Cell phone 215-896-1047; day off is Monday

Administrative Assistant: Monica Lichti, office.bcmc@sbcglobal.net

Custodian: Michael Crawford, 316-727-9840

Music Coordinator: Rebecca Schloneger, 316-772-6084

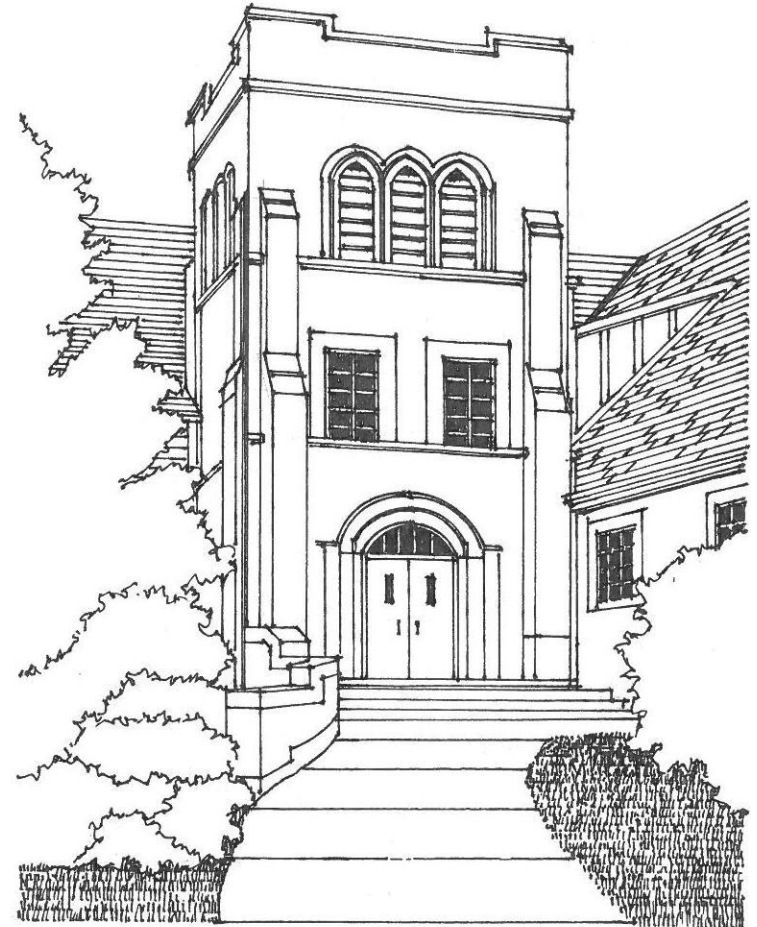
Bell Choir Director: Vada Snider, 283-5231

Chancel Choir Director: William Eash

Cherub Choir director: Jill Siebert

Junior Choir director: Elizabeth Schrag

October 19 at BCMC: Attendance: 451. General Fund: \$8849.49; MCC Meat Canning \$1050; Living Stones \$290.



Bethel College Mennonite Church
October 26, 2014

Bethel College Mennonite Church

October 26, 2014

9:30 a.m. Worship

GATHERING

Prelude Karen Loucks, piano
Introit *Canticle of the turning* arr. Thompson
Chancel Bells; Bethany Schrag, solo
Greeting and prayer Heidi Regier Kreider
***Hymn** *Oh, for a thousand tongues to sing* **HWB 110**
(Children come forward during hymn)

LISTENING FOR GOD'S WORD

Time with children
Old Testament Leviticus 19:1-2, 15-18, 34 Rosalind Andreas
Hymn *Obey my voice* **HWB 163**
Epistle 1 Thessalonians 2:1-8
Worship music *Pass it on* arr. Eithun
Chancel Bells; Vada Snider, director; Bethany Schrag, solo
Gospel Matthew 22:34-40
Sermon *The Nevertheless of Love* Walter Sawatzky

RESPONDING IN FAITH

***Hymn** *For the healing of the nations* **HWB 367**
Prayer of God's People

Offering

To learn more about BCMC or share a prayer request, please fill out a card from the pew rack and place in offering plate.

Offertory

People with October birthdays are invited to come forward during the offertory to receive a blessing

***Dedication hymn** *Praise, I will praise...* (v. 1) **HWB 76**
***Dedication prayer**

SENDING

***Hymn** *Praise, I will praise...* (v. 2-3) **HWB 76**
***Benediction**
***Benediction response**
***Postlude**

HWB = Hymnal: A Worship Book

STJ = Sing the Journey

*All who are able are invited to stand

Welcome visitors and friends! May you sense God's presence at BCMC. Personal hearing devices are at the north sanctuary entrance. The nursery at rear of sanctuary is available during worship for families with infants and toddlers. Following Time with Children, children receive activity bags to use during worship (return to baskets at the entrance as you leave). We invite members and visitors to fill out welcome/prayer cards located in pew racks and place them in the offering plates for response by pastoral staff.

Welcome to guest preacher Walter Sawatzky, professor emeritus of church history and mission at Anabaptist Mennonite Biblical Seminary in Elkhart, IN and this year's Menno Simons lecturer at Bethel College. **During a Sunday school elective at 10:50 a.m. in the sanctuary**, Walter will present *Pilgrimage to the East*, with slides and commentary about his faith journey, vocation, and travels.

An orientation and membership class for persons interested in joining BCMC will take place Sunday afternoons beginning today at 1-3 p.m. in Room 14 and continuing Nov 2, 9 and 16, with reception into membership during worship Nov. 23.

We offer sympathy to Shirley and Paul Harms on the death of Shirley's sister, Marjorie Funk Schroeder, Oct. 18, Mt. Lake, MN. The memorial service was Oct. 21 at Bethel Mennonite Church in Mt. Lake.

Please remember in your prayers the family of Irva LaVonne Schmidt, who gathered for an inurnment service for Irva last Monday at the BCMC columbarium. Irva died on July 9, 2014.

Mennonite Central Committee meat canning days for Newton area churches are Oct. 29, 30, and 31. Let's continue BCMC's tradition of volunteering during the meat canning days as well as financial contributions! Contribution envelopes are in church mailboxes. Make checks out to BCMC designated for MCC Meat Canning. To volunteer, sign up in the rear of the sanctuary with Hugo Boschmann, BCMC Meat Canning representative.

The church building has been having various electrical issues. The BCMC Facilities Committee and BCMC staff are working with these issues and hope to have some solutions soon. In the meantime, please bear with us!

Recently Nathan Toews spoke at BCMC about efforts to resettle Colombian families in Brazil; one family has now moved. Mennonite Central Committee Canada is the primary supporter of this effort but other support is welcomed. It takes about \$8,000 to resettle a family. Contributions can be sent to MCC, Emergency Fund, Colombian-Brazil Refugee Resettlement, 21 S. 12th Street, PO Box 500, Akron, PA 17501-0500 ~ *Margaret Toews, Witness Commission chair*

This Week at BCMC: October 26– November 2, 2014

Western District Conference Reference Council will meet Sat., Nov. 15, at Eden Mennonite Church, rural Moundridge. The WDC Discernment Task Force will report the results of the recent WDC Survey regarding authority, polity and sexuality. Further discernment will focus on polity – the relationships and sphere of authority of congregation, conference, and denomination. This Reference Council is open to members and participants of WDC congregations in addition to WDC commissions and committees and pastors. Please register online at <http://mennowdc.org/wdc-reference-council/> or call 316-283-6300.

The Hesston College Theatre program will present five performances of Thornton Wilder's classic *Our Town* Oct. 30 to Nov. 2. Tickets are \$10 for adults and \$5 for students/children. Go to hesston.edu for more information.

Jeff Koller, writer and historian from Moundridge will speak at the Tues., Nov. 11 banquet of the Swiss Mennonite Cultural and Historical Association (SMCHA) 6 p.m. at the Water's Edge Restaurant, Hesston. He will focus on stories of Mennonites who served in alternative service instead of serving in war. The meal is \$20. Send reservations to Barbara Stucky (620-345-8367) or bstucky39@mtelco.net by Tues., Nov. 4. SMCHA membership tickets will be available for 2014 or 2015 for \$20/year or \$100/six years. The banquet is open to all.

Save the dates: a Ten Thousand Villages festival sale will take place in Newton in the Prairie Room at Prairie Harvest in downtown Newton on Nov. 20-22, Nov 28-29, and Dec. 4-7. Watch for more details!

Kansas Mennonite Disaster Service volunteers had a good day of work with roof repairs on a house near Canton. The project has not been completed. More volunteers are called for Sat., Oct. 25. The project location is at 411 North 4th, Canton, one block west of main then north on 4th. Contact Gordon Unruh at 620-747-6835 to register your availability and for further information.

Mennonite Central Committee Central States offices have received quality fabrics from the Colorado MCC Relief Sale. These fabrics will be sold at the MCC offices in North Newton (121 E. 30th St.) beginning Oct. 23, Thurs. through Fri., Oct. 31, 9 a.m. until 5 p.m. during meat canning time. These fabrics were donated by the family of a professional quilter (now deceased) in Denver.

Employment Opportunity. Mennonite Church USA's Executive Board staff is seeking a part-time communications association and coordinator for the Women in Leadership Project. To read more about this job opening and to apply, visit www.mennoniteusa.org/about-us/jobs-with-mennonite-church-usa/.

Today

10:30 a.m. Fellowship time in the Gathering Place; coffee/water available.

10:50 a.m. Christian Education – Visitors welcome!

- 2-3 year olds through 4th grade—meet in Fellowship Hall for snack, then Room B-8 for singing before going to classrooms (2-3 year olds in B-6; Pre-K —1st grade in B-4; 2nd-4th grade stay in B-8)
- Grades 5-8 —Rm 26
- Senior High Youth—Rm 22

Adult classes:

- Elective in sanctuary: *Pilgrimage to the East* by Walter Sawatzky-slides and reflections on his faith journey, vocation and travels.
- Agape —KIPCOR, 2515 College Ave.
- Bible Study— Room 14 – Study on Philipians
- Catacombs—Rm B-5—Will attend elective with Walter Sawatzky
- Fine Arts —Rm 24—“*From Paul to Constantine*” Bart Erdman d.v.d.s
- Issues & Christianity—Rm 23—*Understanding of the New Testament*
- Mosaic—Rm 20
- Open Circle—Rm B-7—Sermon reflection and response
- Seekers—Rm 21—*Christian Poetry by R.S. Thomas*, James Yoder
- Sojourners—Chapel—Will attend elective with Walter Sawatzky

1:00 p.m. Membership orientation class – Room 14

Monday, October 27

3:00 p.m. BCMC worship DVD—Kidron Bethel Health Care

7:00 p.m. Staff Congregation Relations Committee—Rm 14

7:30 p.m. Newton Chorale rehearsal—Sanctuary

Tuesday, October 28

1:00 p.m. BCMC worship DVD—Kidron Bethel Assisted Living

Wednesday, October 29

8:00 a.m. Staff meeting— Rm 14

6:00 p.m. Wednesday night supper—Fellowship Hall

6:30 p.m. Cherub Choir (Rm 24) and Junior Choir (Rm 28)
Senior High youth—Rm 22

6:45 p.m. Adult Program—Fellowship Hall

7:15 p.m. Venture Club (Rm B8) and Junior High Club (Rm 26)

7:30 p.m. Chancel Choir—Sanctuary; Youth Bells—Rm B-7

8:30 p.m. Chancel Bells—Rm B-7

Thursday, October 30

4:15 p.m. Administrative Team—Rm 14

7:30 p.m. Newton Chorale rehearsal—Sanctuary

calendar continued on next page

Sunday, November 2—Daylight Savings Time Ends—Set Clocks Back

- 9:30 a.m.** Worship with music by Chancel Choir, meditation by John Tyson, readings/reflections by youth/mentors, and blessing of mentor pairs.
10:30 a.m. Fellowship time in the Gathering Place; coffee/water available
10:50 a.m. Christian Education
1:00 p.m. Membership class – Room 14
4:00 p.m. Bethel College Women's Chorus concert - Sanctuary

Thank you to all for your prayers, cards, food, memorial gifts, and expressions of concern during the past weeks during the death and mourning for our father, grandfather, and great-grandfather. ~ *The J. O. Schrag family*

Pray for those receiving medical care: Wider Fellowship member Ruth Unrau recently received care at Bluffton (OH) Hospital, and is now at Mennonite Memorial Home in Bluffton.

Staff: This Thursday Heidi Regier Kreider, John Tyson and Susan Wheeler will attend Western District Conference Pastors' Day Apart on the theme *Cultivating an Incarnational Church*.

Bethel College announcements:

- **Oct. 26-28 – Bethel College's Menno Simons Lectures** with Walter Sawatsky, professor emeritus of church history and mission at Anabaptist Mennonite Biblical Seminary, Elkhart, IN: *Sun., Oct. 26, 7 p.m.* — "Pluralities of Mennonite History – Why Russian Mennonites as Paradigm?" *Mon., Oct. 27, 11 a.m.* — "Reconciling Free Churches to Two Millennia of Global Christianity" *Mon., Oct. 27, 8 p.m.* — "After 500 Years – Pressing Issues on Globalization of Mennonite Witness" *Tues., Oct. 28, 7 p.m.* — "Full-Orbed Integration of Worship, Ethics, Nonviolence and Public Theology for 21st Century"; all sessions in Krehbiel Auditorium, with opportunity for discussion following. For more information see brochures in literature rack in the main foyer.
- **Mon., Oct. 27 – Bethel College Philharmonia Orchestra** presents *Symphony No. 2* by Johannes Brahms, 7 p.m., Memorial Hall; free with freewill offering taken.
- **Bethel College Life Enrichment—Oct. 29** (for community members age 60 and over), Bethel College, Luyken Fine Arts Center, Krehbiel Auditorium
9:30 a.m. *The Tectonic Plates Shaking American Families*, Stan Eitzen
10:35 a.m. *Josie—the Story of a Pioneer Girl*, Donnis Slusser Crane
11:30 a.m. *Collectible World Beads*, Kathy Richardson
- **Sun., Nov. 2 – KIPCOR 2014-15 film series continues** with *How to Start a Revolution*, 3 p.m., Bethel College, Krehbiel Auditorium; free with donations accepted to support the work of KIPCOR. The film profiles Gene Sharp, the world's leading expert on nonviolent revolution, author of *From Dictatorship to Democracy*. Talkback session with Duane Friesen follows the film.

Bethel College announcements continued:

- **Sunday, Nov. 2, 2 p.m.** — **Bethel College Men's Ensemble** fall concert, Administration Building chapel
- **Sunday, Nov. 2, 4 p.m.** — **Bethel College Women's Chorus** fall concert, Bethel College Mennonite Church
- **Mon., Nov. 3 – Staley Lectures with John Haught at Bethel College, Krehbiel Auditorium, 11 a.m. and 7:30 p.m.** Haught is a Catholic theologian from Georgetown University and the author of *Science and Faith*, one of the senior capstone course textbooks at Bethel this year. Haught's special interests are issues of science, cosmology, ecology and reconciling evolution and religion.

Jeremy Kempf will be in concert, Sat., Nov. 1, 8 p.m., Hesston Mennonite Church (309 S. Main St, Hesston). Kempf is the director of music at Trinity Mennonite Church in Glendale, AZ. He has composed many widely-used worship songs and is well-known and loved for his music leading at MCUSA youth conventions. Concert is sponsored by MCUSA Convention Planning, Bethel College, and Hesston College and free for people of all ages.

Crossroads Community Church Auction for Mennonite Central Committee is Sat., Nov. 1, starting at 10 a.m. at the Winfield Fairgrounds, Bldg. 4 in Winfield. All proceeds from the auction will support MCC water projects in Africa. There are a variety of items being sold at the sale including two 2009 Dodge trucks, three refrigerators, a Hustler Mini-Z 42" mower, two new Rubbermaid Storage Sheds, old games, many vintage items, household and furniture items as well as quilts and much more! Make plans to attend this sale and support MCC's water projects. Contact Crossroads at 620-229-8464 for more information.



It's Supper Time! Wednesday night supper, Oct. 29, 6 p.m. in Fellowship Hall, followed by activities for children, youth and adults. Adult program: *Harvey County Homeless Shelter update* with James Wilson, director

(sponsored by Witness Commission).

To make supper reservations, complete this form and place in offering, or email office.bcmc@sbcglobal.net, sign-up on bulletin board near church office, or call office at 283-3667 by 10 a.m. Mon., Oct. 27. **Your reservation helps the cooking crew know how much food to prepare!** Cost is by donation, with suggestion of \$4.50/person or \$12/family per meal. Please bring your own table service. Oct. 29 menu: "Ghoul" ash, (goulash) peas, apples with caramel dip, pumpkin cake.



Meal reservation(s) for October 29

Number of people attending meal _____ Name: _____