

Prayer Requests

Mennonite Church USA: Alisha and Josh Garber, serving with Mennonite Mission Network, foster community life in the residence halls at LCC International University in Lithuania. Pray for them as they build relationships with the 53 Russian students and 69 Ukrainian students on campus, helping them listen to each other and develop conflict resolution skills.

Western District Conference: Pray for Dwight Regier, our Western District Conference Youth Ministry Network Leader, as he encourages and guides youth pastors in their monthly gatherings and in one-on-one meetings.

This congregation: Pray for BCMC staff as they gather this week to plan for the coming months, and begin a new year of programs and activities.

If you would like to request prayer or a visit, contact the church office or one of the pastors. The Prayer Network and Visitation Team are ministries sponsored by the Deacon Commission.

Bethel College Mennonite Church welcomes into fellowship and membership all persons who confess faith in Jesus Christ, without regard to their race, ethnic background, gender, age, sexual orientation, education, ability, and other factors which give rise to discrimination and marginalization.

Church office hours: 9:00 a.m. – noon on Mon – Fri; 1:00 –5:00 p.m. on Mon – Thurs.
Building is locked daily at 5 p.m. unless evening activities are scheduled.
Notary public service is available in the church office.

Phone: 316-283-3667 Fax: 316-283-2079
Email: office.bcmc@sbcglobal.net Web site: bethelcollegemennonitechurch.org

Pastor: Heidi Regier Kreider, heidi.bcmc@sbcglobal.net
Home phone 284-0448, day off is Friday

Associate Pastor for Pastoral Care: Susan Wheeler, susanmwheeler@gmail.com
Home phone 620-327-2295, cell phone 316-706-0887; day off is Monday

Administrative Assistant: Monica Lichti, office.bcmc@sbcglobal.net

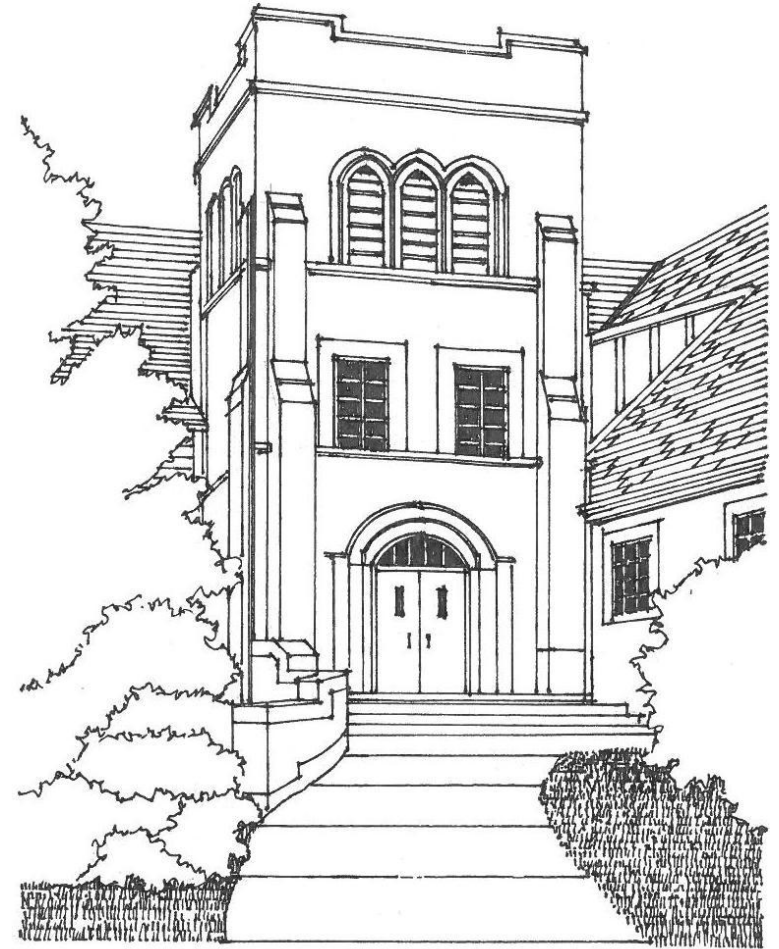
Custodian: Michael Crawford, 316-727-9840

Music Coordinator: Rebecca Schloneger, 316-772-6084

Organist: Eleanor Kaufman, 283-7421;

Bell Choir Director: Vada Snider, 283-5231

Chancel Choir Director: William Eash



August 10, 2014
Bethel College Mennonite Church

Bethel College Mennonite Church

2600 College Avenue, Box 364, North Newton, KS 67117 316-283-3667

Pastors: Heidi Regier Kreider, Susan Wheeler

August 10, 2014

Worship 9:30 a.m.

TIME FOR WORSHIP

GATHERING

Prelude Karen Loucks, pianist

Introit *Bourrée* Handel

Diego and Josué Coy Dick, violin; Rebecca Schloneger, piano

Greeting Vern Preheim

***Prayer** **STJ 122**

***Hymn** *Jesus calls us here to meet him* **STJ 3**

(Children come forward during hymn)

LISTENING FOR GOD'S WORD

Time with children Eric Litwiller

Kingdom Report – Everence

Worship music *Concerto in A-minor, 2nd movement* Vivaldi

Josué Coy Dick, violin; Rebecca Schloneger, piano

Scripture Genesis 37:1-28 Norma Johnson

Sermon *What's up your sleeve?* Heidi Regier Kreider

RESPONDING IN FAITH

***Hymn** *O day of peace* **HWB 408**

Commissioning Megan Leary for Mennonite Voluntary Service

Congregational reading **HWB 796**

Prayer of God's People

Offering

To learn more about BCMC or share a prayer request, please fill out a card from the pew rack and place in offering plate.

Offertory *Be still, and know that I am God* Dungan

Melissa Funk, soloist

***Dedication hymn** *God, whose giving (stanza 2)* **HWB 383**

***Dedication prayer**

SENDING

***Hymn** *Lead on, O cloud of Presence* **HWB 419**

***Benediction**

***Benediction response**

***Postlude**

*All who are able are invited to stand

HWB = *Hymnal: A Worship Book*

STJ = *Sing the Journey*

Welcome visitors and friends! May you sense God's presence at BCMC. Personal hearing devices are at the north sanctuary entrance. The nursery at rear of sanctuary is available during worship for families with infants and toddlers. Following Time with Children, children receive activity bags to use during worship (return to baskets at the entrance as you leave). We invite members and visitors to fill out welcome/prayer cards located in pew racks and place them in the offering plates for response by pastoral staff.

Welcome to Eric Litwiller, Charitable Services Representative with Everence, leading the Time with Children and a Kingdom Report, and speaking in Sojourners Sunday School class today and next Sunday. And welcome to violinists Diego and Josué Coy Dick for sharing worship music.

Megan Leary will begin a year with Mennonite Voluntary Service (MVS) in Tucson, AZ, on August 16. She will serve as Garden Coordinator with the Primavera Foundation, which provides pathways out of poverty through safe, affordable housing, workforce development and neighborhood revitalization. Mennonite Mission Network asks for \$3,000 in local support for a year in MVS. BCMC, through the new Education and Service Scholarship Committee, committed \$2,000 from the BCMC Mission and Service Endowment Fund (MSEF). The recent fundraiser meal and other contributions raised \$3,317. Your generous support means that a check for \$3,000 has been sent to MMN, and the MSEF will grow in its ability to help support others in the future. Thank you!

BCMC is responsible to schedule volunteers for the Harvey County Homeless Shelter Aug. 20-26. More volunteers are always needed! If you are interested in helping, please contact Valetta Seymour. Volunteer training Aug. 12 and 28, 6:30 p.m. at HCHS, 900 W. Broadway, Bldg. 7. **Please check** the following website for the needs of the Homeless Shelter: www.hchs-ks.com/needs. There is also a list on the bulletin board and some lists to take with you in the Homeless Shelter box at the back of the sanctuary. Shelter Items can be left in this box at the back of the sanctuary.

Staff: John Tyson, new Associate Pastor for Faith Formation, will begin work in the church office this Friday, Aug. 15.

The family of Stanley Voth invites you to come and go 90th birthday celebration for Stan today, Aug. 10, from 2-5 p.m. at the Bethel Kidron Community Room. No gifts, please. ~ *Tim and Carolyn Rich Voth*

This Week at BCMC: August 10 – August 17, 2014

Day on the Farm, an opportunity for all to experience rural life, with cattle, goats, rabbits, poultry and more, is Sat., Aug. 16, 10 a.m., and includes lunch. Admission is free; donations go for the ministry of Agri-Urban to support Bethel College, Mennonite Church USA and Western District Conference. Held at the Duerksen/Knepp farm, 1582 Falcon, Hillsboro. More details: WDC website mennowdc.org under the Events tab.

Camp Mennoscah announcements:

- **Annual Camp Sing** - today, 6 p.m. at Shalom Mennonite Church, Newton, with Michael Unruh and Greg Shelly leading the singing.
- **Mental Health Spiritual Retreat** for those affected by mental illness, and their family and friends, is Aug 31-Sept. 1 on the theme *Finding Your True Self*. Activities include hayrack ride, worship/music, swimming, crafts, input sessions. Partial scholarships available. Contact camp to register.
- **Women and Girls Retreat** - September 5-7 at Camp Mennoscah. Registration forms available from the BCMC Women's Fellowship.
- **Work & Play Camp** - Sept. 14-17. There's no charge for this time of volunteering and fellowship--just a suggested donation of \$4.00 per meal. All ages are welcome. Contact the camp at 620-297-3290.
- **Camp Mennoscah has a few open weekends this fall** for almost any size group. Reservations are on a first request basis. Call 620-297-3290.

Anabaptist Mennonite Biblical Seminary - Kansas Center offers *Anabaptist History and Theology* taught by Professor Lois Barrett this fall semester, exploring the settings, ideas, and personalities that shaped Anabaptism in early 16th-century church and society, and its relevance for contemporary church and personal life. Meets four weekends (Sept. 5-6, Oct. 10-11, Nov. 7-8, Dec. 5-6, with Fridays 6:30-9:30 p.m. and Saturdays 8:30 a.m.-4:00 p.m.) in the classroom at the Western District Conference offices. For more information, see www.ambs.edu/academics/fall-courses.cfm or contact the registrar at registrar@ambs.edu. Credit or audit.

Volunteers are needed at Rocky Mountain Mennonite Camp for the Pleiades Project for the next two weeks to take down old buildings and remove several large trees from the building site. To volunteer, contact Camp at 719-687-9506. Volunteers are also needed to assist with kitchen and housekeeping on August 13-15 and August 29-September 1 (Labor Day weekend). If unable to volunteer, donors are equally critical in completing this project. \$225,000 is needed to complete this project and avoid a loan (and additional interest expense). The goal is to have the facility ready in time for the 2015 camping season.

Rooted and Grounded: A Conference on Land and Christian Discipleship, Sept. 18-20, hosted by Anabaptist Mennonite Biblical Seminary, Elkhart, IN, will engage in a theology that cares for God's creation, for the land and all that lives on it. For more information see <http://www.ambs.edu/news-events/Rooted-and-Grounded.cfm>.

Today

10:30 a.m. Fellowship time in the Gathering Place

10:50 a.m. Christian Education – Visitors welcome! (There is no children's Sunday school today - Fall classes begin August 17) Pastor Heidi Regier Kreider will host information and discussion sessions related to the WDC Discernment Task Force survey in Fellowship Hall. Another session will be from 12 noon to 1 p.m. in Fellowship Hall

Adult Sunday school classes:

- Agape (Young Adults)— KIPCOR, 2515 College Ave.
- Bible Study—Will not meet during June, July and August
- Catacombs—Rm B-5
- Fine Arts—Rm 24
- Issues & Christianity—Rm 23—*Understanding of the Old Testament*, dvd
- Mosaic—Rm 20
- Open Circle—Rm B-7—Sermon reflection and response
- Seekers—Rm 21—Open sharing and/or discussion of sermon
- Sojourners—Chapel— *Necessary Family Communications*, Eric Litwiller, Everence

Monday, August 11

3:00 p.m. BCMC worship DVD—Kidron Bethel Health Care

Tuesday, August 12

1:00 p.m. BCMC worship DVD—Kidron Bethel Assisted Living

Wednesday, August 13

8:00 a.m.—Noon—Staff planning retreat – Gathering Place

2:00 p.m. – Orlando and Maxine Fast family gathering – Sanctuary/Fell. Hall

7:00 p.m. Sunday school teacher orientation—Fellowship Hall

Thursday, August 14

7:00 p.m. Finance Committee—Rm 14

Friday, August 15

3-4:30 p.m. Education and Service Scholarship Committee--Library

Sunday, August 17

9:30 a.m. Worship - Sermon by Heidi Regier Kreider; installation for John Tyson, associate pastor for faith formation; Commissioning for Sunday school teachers and club leaders; Backpack blessings; Presentation of Bibles for 3rd graders

10:30 a.m. Fellowship time with ice water available in the Gathering Place.

10:50 a.m. Christian Education—Fall Sunday school begins

12:00 noon All church potluck—Fellowship Hall



BCMC's annual dessert reception for Bethel College students will be Aug. 24 at 7 p.m. on the BCMC front lawn. BCMC members – please bring a dessert or ice cream topping. Ice cream and beverages are provided.

All children's Sunday school teachers for Fall are requested to attend a meeting Wed., Aug. 13, 7 p.m. in Fellowship Hall for orientation to the new *Shine* curriculum, to review Sunday school procedures and safety guidelines for children and youth - and to enjoy some refreshments!

Leah Bartel was wed to Gregory Schwarz of Olathe, KS on August 9 at Rainbow Mennonite Church in Kansas City with Ruth Harder officiating. She says, "Thank you for your care and support."

The memorial service for Ruth Rediger Reimer will be at the Bethesda Home chapel, Tues., Aug. 19, 2:30 p.m. led by Bethesda Home chaplain, Gail Graber. Burial will be at Sugar Creek Mennonite Church, Wayland, IA, on August 23. Memorial gifts are designated for Bethesda Home in Goessel, or Sugar Creek Mennonite Church, in care of Broadway Colonial Home, Newton.

The new Sunday school year for children and youth begins August 17. That day during worship we will celebrate with a blessing of children's backpacks, commissioning for Sunday school teachers, and presentation of Bibles to 3rd graders. Also during worship **John Tyson will be installed as the new Associate Pastor for Faith Formation.** A congregational potluck lunch will take place at noon, as an opportunity for fellowship and to welcome John and Amy Tyson to the BCMC community.

BCMC annual Leadership Retreat will take place Sat., Sept 13, 8:00 a.m. – 12:00 noon at Dyck Arboretum in Hesston. Members of Church Board, Board-appointed committees, commissions, and staff are invited to this time of worship, fellowship, and discernment of God's presence and guidance for BCMC. Invitations with RSVP information will be sent closer to the date.

Mennonite Central Committee U.S. and the Peace and Justice Support Network of Mennonite Church USA sponsors "Conversations for Peace in Palestine and Israel," at Hesston Mennonite Church on Sat., Sept. 6, 9:30-11:30 a.m. J. Daryl Byler, a former MCC representative in the Middle East and current executive director for Eastern Mennonite University's Center for Justice and Peacemaking, will share from his experience and facilitate the conversation.

Fourteen new books are in the church library. Stop by to pick up a copy of the list, browse and check out something to read. The August issue of *The Mennonite* is available. ~ *Library Committee*

Help needed at Newton Et Cetera Shop: Serve Mennonite Central Committee and your local community by clerking at Et Cetera Shop! Clerks are needed for morning, afternoon, and evening shifts. Call 283-9461 or email manager@newtonetceterashop.com.

The annual Mennonite Central Committee Flatlander Bicycle Ride will be Sat., Sept. 20, originating at the MCC offices, 121 E. 30th St., North Newton. This year's ride will raise funds for an MCC water development project in Kenya. Rides of approximately 35, 45 and 65 miles, as well as a shorter family ride, are planned. Brochures are on the bulletin board or on the MCC website, mcc.org/get-involved/events/mcc-flatlander-bicycle-ride. You can register on-line on the website.

Western District Conference survey: BCMC members received a survey request via e-mail, forwarded by the church office from the WDC Discernment Task Force. The Task Force will guide conference-wide conversation on the resolution from Rainbow Mennonite Church asking for greater latitude for churches and pastors to determine pastoral response to persons of same sex attraction. Your participation in the survey is vital in providing counsel to the leadership of WDC. Please respond to the online survey by August 31. **Read all of the instructions carefully.** To fill out the survey you need to go to the link which says: <https://www.surveymonkey.com/s/WDCopinion>. If you are not able to complete the survey online, paper copies are available in the church office and foyer. Fill them out and return to the church office or box in foyer by August 24. **Today, Aug. 10,** pastor Heidi Regier Kreider will host information and discussion sessions related to the survey. The sessions will be in Fellowship Hall, one session during Sunday school at 10:50 – 11:45 a.m., and another session at 12:00 noon – 1 p.m. (bring a sack lunch if you'd like to eat lunch during that time). This will be opportunity to review background materials, and share questions and conversation together.

The biennial convention of Mennonite Church USA will be June 30-July 5, 2015, in Kansas City. Western District and South Central Conferences will serve as host area conferences, with multiple opportunities for volunteering - full-time (40 hours of work during the convention week) or part-time. There are different types of "perks" depending on hours worked. For more information see: <http://convention.mennoniteusa.org/registration/volunteer/>.

Mennonite Central Committee announcements:

- **Harvest Giving** - An opportunity to share the fruits of your labor with others around the world through Mennonite Central Committee. For Harvest Giving envelopes contact Maynard Knepp, 283-2720, or maynardknepp@mcc.org.
- **MCC responds to needs around the world:** MCC is providing vital items for life to Iraqis affected by conflict, food for displaced families in Gaza, responding to flooding in the Balkans and advocating for a compassionate response to migrant children along the U.S./Mexico border. Check mcc.org for detailed information about these responses and to join MCC to address human needs in the name of Christ around the world. For related information see website for the Mennonite Palestine Israel Network at <http://mennopin.wordpress.com/gazaunderattack/>.