

## Prayer Requests

**Mennonite Church USA:** Caleb Yoder is teaching congregational and upper-level courses on biblical study and Anabaptist theology in Ecuador. Pray for energy and inspiration as Caleb helps provide leadership for a new church in Calderón and adds preaching and administration responsibilities to his normal course load.

**Western District Conference:** Pray God's blessing on Iglesia Luz del Evangelio, Dallas, Texas, and Pastor Juan Limones. They are hosting the closing worship gathering this morning of Western District Conference Assembly 2014.

**This congregation:** Give thanks for the BCMC Creation Care Committee, as they encourage us toward lifestyles and use of resources that nurture and care for the earth.

*If you would like to request prayer or a visit, contact the church office or one of the pastors. The Prayer Network and Visitation Team are ministries sponsored by the Deacon Commission.*

***Bethel College Mennonite Church welcomes into fellowship and membership all persons who confess faith in Jesus Christ, without regard to their race, ethnic background, gender, age, sexual orientation, education, ability, and other factors which give rise to discrimination and marginalization.***

\*\*\*\*\*

Church office hours: 9:00 a.m. – noon on Mon – Fri; 1:00 –5:00 p.m. on Mon – Thurs.

Building is locked daily at 5 p.m. unless evening activities are scheduled.

Notary public service is available in the church office.

Phone: 316-283-3667

Fax: 316-283-2079

Email: [office.bcmc@sbcglobal.net](mailto:office.bcmc@sbcglobal.net)

Web site: [bethelcollegemennonitechurch.org](http://bethelcollegemennonitechurch.org)

**Pastor:** Heidi Regier Kreider, [heidi.bcmc@sbcglobal.net](mailto:heidi.bcmc@sbcglobal.net)

Home phone 284-0448, day off is Friday

**Associate Pastor for Pastoral Care:** Susan Wheeler, [susanmwheeler@gmail.com](mailto:susanmwheeler@gmail.com)

Home phone 620-327-2295, cell phone 316-706-0887; day off is Monday

**Administrative Assistant:** Monica Lichti, [office.bcmc@sbcglobal.net](mailto:office.bcmc@sbcglobal.net)

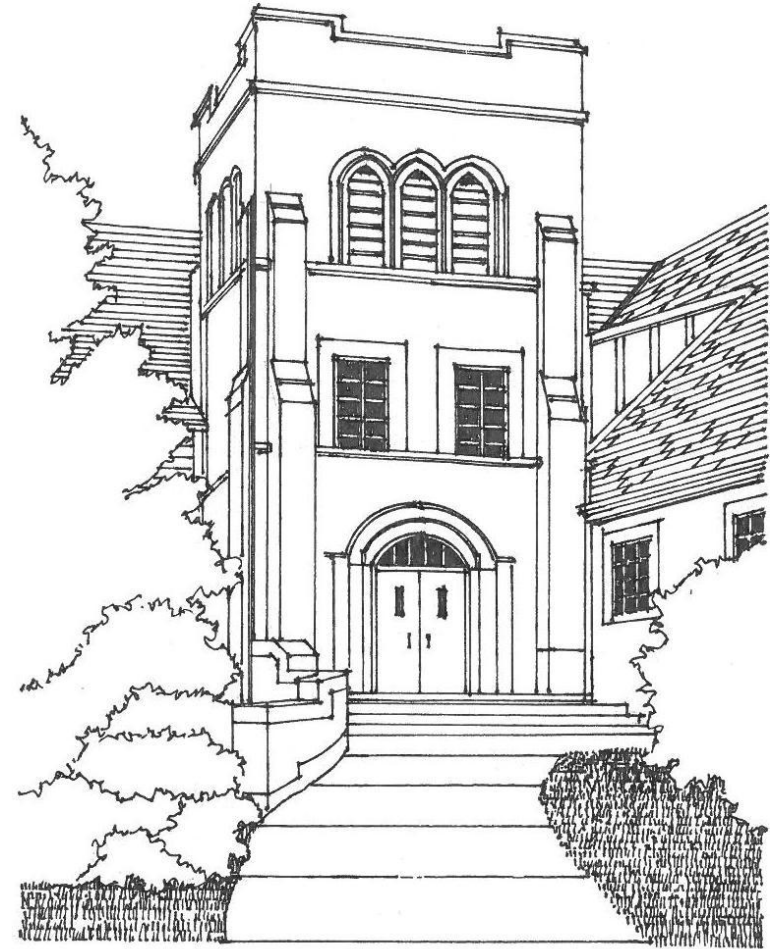
**Custodian:** Michael Crawford, 316-727-9840

**Music Coordinator:** Rebecca Schloneger, 316-772-6084

**Organist:** Eleanor Kaufman, 283-7421;

**Bell Choir Director:** Vada Snider, 283-5231

**Chancel Choir Director:** William Eash



July 6, 2014  
Bethel College Mennonite Church

# Bethel College Mennonite Church

2600 College Avenue, Box 364, North Newton, KS 67117 316-283-3667

Pastors: Heidi Regier Kreider, Susan Wheeler

**July 6, 2014**

**Worship 9:30 a.m.**

## TIME FOR WORSHIP

### GATHERING

<b>Prelude</b>	<i>Cantabile</i>	Haan
	<i>Come, O creator spirit, come</i> [HWB #27]	Sarum plainsong, arr. Held Eleanor Kaufman, organist
<b>Introit</b>	<i>Sweet, sweet Spirit</i>	Hearts 4 Him
<b>Greeting</b>		Mike Claassen
<b>*Opening prayer</b>		<b>HWB 670</b>
<b>*Hymn</b>	<i>Holy, holy, holy!</i>	<b>HWB 120</b>
	(Children come forward during hymn)	
<b>Time with children</b>		Marlene Ewert

### LISTENING FOR GOD'S WORD

<b>The gift of creation</b>		
Scripture	Psalm 96:1-3, 9-13	<b>HWB 820</b>
		Dianne Epp, leader
Anthems	<i>O, worship the King</i>	Hearts 4 Him
	<i>When the mountains sing your praise</i>	
<b>The gift of redemption</b>		
Scripture	2 Corinthians 5:17-21	<b>HWB 853</b>
Anthems	<i>God on the cross</i>	Hearts 4 Him
	<i>I am determined</i>	
<b>The gift of presence</b>		
Scripture	Romans 8:18-39	<b>HWB 848 and 849</b>
Anthems	<i>Sweet Beulah land</i>	Hearts 4 Him
	<i>Sweeter as the days go by</i>	

### RESPONDING IN FAITH

#### Prayer of God's People

#### Offering

To learn more about BCMC or share a prayer request, please fill out a card from the pew rack and place in offering plate.

**Offertory** *In thee is gladness* [HWB #114] Gastoldi, arr. Wood

**\*Dedication hymn** *Praise with joy* **STJ 16**

**\*Dedication prayer**

### SENDING

<b>*Closing hymn</b>	<i>I'm pressing on the upward way</i>	<b>STJ 96</b>
<b>*Benediction</b>		<b>STJ 125</b>
<b>*Benediction response</b>	<i>Goodbye, world, goodbye</i>	Hearts 4 Him
<b>*Postlude</b>	<i>Recessional</i>	Held

\*All who are able are invited to stand

**HWB** = *Hymnal: A Worship Book*

**STJ** = *Sing the Journey*

**Welcome to the men's gospel ensemble Hearts 4 Him**, leading in a service of music today. A love of music, a passion for Christ, and a "heart for Him" were the driving forces that led to the group's formation in 2001. Their music is designed to encourage, inspire and transform lives, and to bring praise to God. Their most recent recording, *I Then Shall Live*, was released in February 2013. The original group began at Koerner Heights Church in Newton. Today's singers are (left to right) Jim Bartel and David Oller, baritone; Lawrence Kliever, Dave Deutschendorf and Duane Loewen, bass; Bernie Zuercher, 1<sup>st</sup> tenor; Rod Loucks and Jim Yoder, 2<sup>nd</sup> tenor; JoAnn Nickel, accompanist. Keith Neufeld is sound technician.

**Welcome visitors and friends!** May you sense God's presence at BCMC. Personal hearing devices are at the north sanctuary entrance. The nursery at rear of sanctuary is available during worship for families with infants and toddlers. Following Time with Children, children receive activity bags to use during worship (return to baskets at the entrance as you leave). We invite members and visitors to fill out welcome/prayer cards located in pew racks and place them in the offering plates for response by pastoral staff.

**Children's Summer Sunday school:** During the months of June and July, children ages Pre-K through 8<sup>th</sup> grade meet together in Fellowship Hall. Sessions use the Mennonite Church USA curriculum, *Stories of God's People*. Each Sunday a different Bible character will be studied. (Note: *There will be no children's Sunday School Aug. 3 and 10. Fall Sunday school will begin August 17.*)

**July forums:** All are invited to these upcoming adult Sunday school electives, at 11:50 a.m. in the sanctuary:

July 6 – Paraguay Partnership - Merrill and Boots Raber

July 13 – Report from Western District Conference assembly

July 20 – Service Adventure reports - Nat Dick and Mark Kreider

July 27 – Presentation on Camp Mennoscah

## This Week at BCMC: July 6 – July 13, 2014

**Jason Holcomb, a professor from Kentucky**, has helped a Kansas farmer with custom harvesting for many years. He met Schweitzer farmers and was asked to interview several. Jason will share his impressions and stories from seven local participants today, July 6, 2:30 p.m. at the Pine Village Wellness Center in Moundridge. Open to all. No reservations necessary. Refreshments will be served. A booklet of these interviews will be available for a nominal fee. ~ *Swiss Mennonite Cultural and Historical Association*

**If you missed the *Shine!* launch** there is another chance to hear about the new *Shine!* curriculum and how to use it, Tues., July 8, 7-9 p.m. at Buhler Mennonite Church.

**Delegates to the Western District Conference** representing Bethel College Mennonite Church are Vern Preheim, Norma Johnson, Marlene Faul, Heidi Regier Kreider, Patty Shelly, Dave Linscheid. We thank them for their service at the WDC Assembly in Waxahachie, TX, this weekend. All information about program, speakers, workshops, delegate sessions is on the WDC website ([www.mennowdc.org](http://www.mennowdc.org)). Please pray for this gathering of the wider church. ~ *Gifts Discernment Committee*

**The Western District Conference office** will be closed July 4 through 7 for annual Assembly.

**Everence Financial will present an informational seminar, *Retiring soon? Make sense of your Medicare choices*** at 4 p.m. and 7 p.m. on two Mondays: July 7 and Aug. 4. Everence Financial Advisor Robert Wall will speak on Medicare, provide instructions on how to enroll, explain options if you continue to work, and answer related questions. Seminars will be at Everence Financial, 371 N. Old Highway 81, Hesston. To reserve a spot, contact Darlene Buller at (877) 467-7294, (620) 327-4043 or [darlene.buller@everence.com](mailto:darlene.buller@everence.com). ~ *Marlene Faul, BCMC Advocate*

**Harvey County Homeless Shelter Update:** HCHS has moved to 900 W. Broadway, Bldg. 7 (Youthville campus). There is a box at the back of the sanctuary for HCHS. Needs are: Boxed meals (hamburger helper, etc.), pasta sauce, peanut butter, cereal, napkins, toilet paper, and new men's and women's socks and underwear. There is always a need for volunteers for staffing. Next volunteer orientation training sessions are July 8 and 24 at HCHS at 6:30 p.m. Let Valetta Seymour know if you are able to be a new volunteer.

### Today

**10:30 a.m.** Fellowship time with ice water available in the Gathering Place.

**10:50 a.m.** Christian Education for all ages – Visitors welcome!

Children and youth Sunday school classes:

- 2-3 year olds—Rm B-6
- Pre-K through 8th grade students—meet in Fellowship Hall

Adult Sunday school classes:

- July Sunday school elective: *Paraguay Partnership* - Merrill and Boots Raber—Sanctuary
- Agape (Young Adults)— KIPCOR, 2515 College Ave.
- Issues & Christianity—Rm 23—*Understanding of the Old Testament*, dvd
- Open Circle—Rm B-7—Sermon reflection and response
- Seekers—Rm 21—*Poland, Ukraine, Siberia revisited*, Hugo and Mary Ann Boschmann

### Monday, July 7

**3:00 p.m.** BCMC worship DVD—Kidron Bethel Health Care

### Tuesday, July 8

**1:00 p.m.** BCMC worship DVD—Kidron Bethel Assisted Living

### Wednesday, July 9

**11:00 a.m.** Memorial Service for Louise Bartel—Sanctuary

**7:00 p.m.** Archive Ad Hoc Committee—Rm 14

### Thursday, July 10

**7:00 p.m.** Finance Committee—Rm 14

**Friday, July 11** – Church office closed for staff vacation

### Saturday, July 12

**8:00 a.m.** Young/Middle-aged Men's group breakfast—Mojo's on the Bethel College campus

**4:00 p.m.** Wedding in sanctuary

### Sunday, July 13

**9:30 a.m.** Worship with sermon by Heidi Regier Kreider; music by BCMC young musicians

**10:30 a.m.** Fellowship time with ice water available in the Gathering Place.

**10:50 a.m.** Christian Education for all ages; July Sunday school elective: Report from Western District Conference assembly

**12:00 noon** Creation Care Potluck—Fellowship Hall—All are invited!

---

**Staff:** Susan Wheeler is out of town through July 8. Heidi Regier Kreider is at Western District Conference assembly in Texas this weekend and will back in the office Monday. John Esau is available to respond to pastoral care needs today; his phone is 283-4624. Monica Lichti will be on vacation July 11 (church office will be closed that day.)

**The BCMC Creation Care Committee will sponsor a potluck lunch** next Sunday, July 13, at noon in Fellowship Hall. You are encouraged to bring local food from your or someone else's garden, farmers' markets, or other local producers. Bring your own tableware; drinks will be provided. All are welcome!

**BCMC young men and beyond, their sons and friends** are invited to the 12th annual campout at Walnut Grove Campground, Harvey County Park West, Fri. eve. to Sat. mid-morning, Aug. 8-9. Arrive Fri. 6:30 p.m. or after. Stay only for the evening, if you wish, or overnight, too. Bring your own meat plus a side dish and drink to share for supper around 7:30 p.m. Fri., items for recreation, camping gear, breakfast food to share Sat. a.m., etc. Questions? Contact Dave Linscheid.

**Camp Mennoscah announcements:**

- **Family Camp** is July 26-27 at Camp Mennoscah. Jesse Graber and Ruth Harder are the leaders. For more information call 620-297-3290.
- Camp Mennoscah still has room at **PreJunior II, First Camp, Junior II, and Junior High II** camps. (Senior High camp has only a limited number of places.) Scholarships are available.
- **Mental Health Spiritual Retreat**, a retreat for those affected by mental illness, along with family and friends, is Aug 31-Sept. 1 on the theme "Finding Your True Self." Activities include hayrack ride, worship and music, swimming, crafts, and sessions on the theme. Partial scholarships are available. Contact Camp Mennoscah.
- **Annual Camp Sing** will be Aug. 10, 6 p.m. at Shalom Mennonite Church.
- **Women and Girls Retreat** - September 5-7 at Camp Mennoscah. Registration forms available early July.

**As armed conflict forces Iraqis from their homes**, Mennonite Central Committee (MCC) is providing vital items for daily life and is planning an ongoing response. MCC is calling on U.S. lawmakers to oppose military intervention and instead to send humanitarian aid. Help reach a goal of 12,000 hygiene kits and 3,000 relief kits for uprooted Iraqis. Gifts of money support MCC's efforts with partners in Iraq on long-term peace efforts. Information is available at [mcc.org/get-involved/kits](http://mcc.org/get-involved/kits) and [donate.mcc.org/iraq](http://donate.mcc.org/iraq) or call 1-888-563-4676. The Action Alert at [mcc.org/advocate-iraq](http://mcc.org/advocate-iraq) provides a simple way to contact your representatives and the president.

**Hoffnungsaue Mennonite Church** invites the broader community to special events, as they continue to celebrate 140 years.

- July 13, 7 pm - Willmar Harder & Hannah Neufeld on their MCC work in Bolivia
- July 20, 7 pm - Historical program and worship at the site of the former Immigrant Houses built for the first settlers to the Inman/Buhler area. Featured speakers: Brian Stucky (methods of locating former buildings), Glen Ediger (research on area Immigrant Houses). Location from Hoffnungsaue church is: 1 1/2 miles north on 13th Ave, 1 1/2 miles west on Arrowhead Road.
- July 27, Celebrating the Past, Faithfully Embracing the Future – 9 a.m. Children's activities, games and informal visiting; 10 a.m. Worship & celebration service; Noon - Fellowship meal.

**What does it mean to be an Anabaptist?** The fall course at AMBS-Kansas Center will be "Anabaptist History and Theology" with Lois Barrett meeting four weekends (Friday evenings and Saturdays) Sept. 5-6, Oct. 10-11, Nov. 7-8, Dec. 5-6. Credit or audit. Early registration deadline is July 28--\$100 discount. Send a Sunday School teacher, or develop a congregational scholarship for this class. Register at [www.ambs.edu](http://www.ambs.edu) or contact Brenna Harker (1-800-964-2627).

**Scripture Sing:** First Mennonite Church, Newton, hosts an evening of song and scripture Sun., July 20, 7 p.m. Musicians will perform pre-selected songs, connecting them with specific scripture texts, but there will also be opportunity for suggestions. The only requirement is to connect the song with the text. Bring instruments if you have them. If you want to sing a new song, bring the music.

**Newton Et Cetera Shop evening manager position:** Key qualifications: available 4-8 p.m. Monday-Friday, great with people, ability to multitask, competent computer/technology skills, values in line with Mennonite Central Committee. College graduate preferred. Begins Aug. 11, 2014. Email resume and 3 professional references by July 14 to [manager@newtonetceterashop.com](mailto:manager@newtonetceterashop.com).

**Rooted and Grounded: A Conference on Land and Christian Discipleship**, Sept. 18-20, hosted by Anabaptist Mennonite Biblical Seminary, Elkhart, IN. Many are becoming increasingly aware of the intimate connection between the environmental crisis and humanity's detachment from the land and perceive the profound link between the (un)health of the land and the inner disorder of our Western society. As God's people, the church must imagine and embody an alternative that cultivates shalom between individuals, within and between communities, between humans and the rest of creation, and with God. This conference will engage in a theology that cares for God's creation, for the land and all that lives on it. Pastors, scholars, creation care advocates and practitioners are invited to join the discussion. See <http://www.ambs.edu> for more information.