

Prayer Requests

Mennonite Church USA: Due to the onset of winter and the holidays, requests for assistance reach a peak this month in the nonprofit agencies for which Mennonite Mission Network's Mennonite Voluntary Service participants work. Pray that the 57 MVSErs in 17 locations will continue to serve their host communities with love and patience.

Western District Conference: Byron and Hilde Pellecer have arrived in Wichita, KS to lead the Hispanic church plant supported by the three WDC congregations in Wichita. Pray for them as they make connections, survey neighborhoods and begin to share God's good news with all they meet.

This congregation: Pray for college students, faculty and staff as they conclude fall semester classes and final exams, and travel over the holidays. *If you would like to request prayer or a visit, contact the church office or one of the pastors. The Prayer Network and Visitation Team are ministries sponsored by the Deacon Commission.*

Bethel College Mennonite Church welcomes into fellowship and membership all persons who confess faith in Jesus Christ, without regard to their race, ethnic background, gender, age, sexual orientation, education, ability, and other factors which give rise to discrimination and marginalization.

Church office hours: 9:00 a.m. – noon on Mon – Fri; 1:00 –5:00 p.m. on Mon – Thurs.

Building is locked daily at 5 p.m. unless evening activities are scheduled.

Notary public service is available in the church office.

Phone: 316-283-3667

Fax: 316-283-2079

Email: office.bcmc@sbcglobal.net

Web site: bethelcollegemennonitechurch.org

Pastor: Heidi Regier Kreider, heidi.bcmc@sbcglobal.net

Home phone 284-0448, day off is Friday

Interim Associate Pastor for Faith Formation: Weldon Martens, weldon.bcmc@sbcglobal.net; cell phone 402-202-9276, day off is Friday

Associate Pastor for Pastoral Care: Susan Wheeler, susanmwheeler@gmail.com

Home phone 620-327-2295, cell phone 316-706-0887; day off is Monday

Administrative Assistant: Monica Lichti, office.bcmc@sbcglobal.net

Custodian: Michael Crawford, 316-727-9840

Music Coordinator: Rebecca Schloneger, 316-772-6084

Organist: Eleanor Kaufman, 283-7421

Bell Choir Director: Vada Snider, 283-5231

Chancel Choir Director: William Eash, 284-0920

Junior Choir Director: Renee Reimer, 605-212-0081

Cherub Choir Director: Megan Siebert, 785-580-9634

Bethel College Caring Ministries Intern: Nicole Smith, 574-612-0078

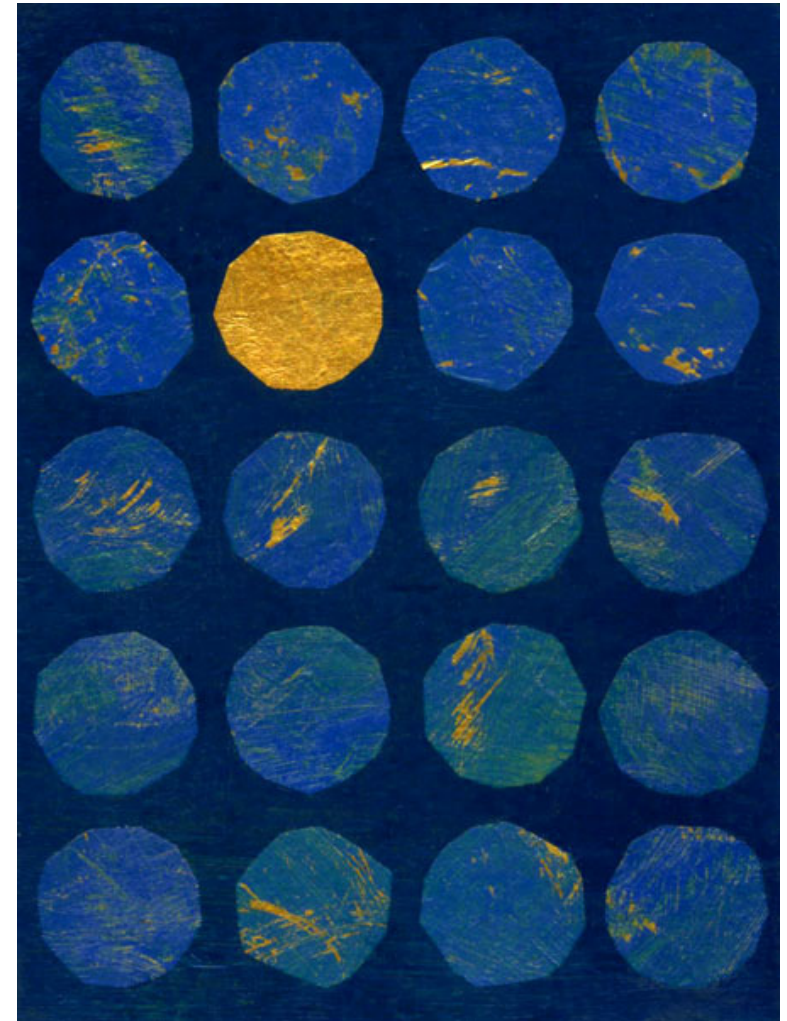
The lights in the sanctuary windows witness to our hope and prayers for peace. We encourage others to place a light in a window as a reminder to pray for peace.

~ *Witness Commission.*

Cover image: *Where Advent Begins* © Jan L. Richardson
Used by permission from the website janrichardson.com

Advent 2013

The mystery of God's dwelling!



December 8, 2013

Bethel College Mennonite Church

Bethel College Mennonite Church

2600 College Avenue, Box 364, North Newton, KS 67117 316-283-3667

Pastors: Heidi Regier Kreider, Susan Wheeler, Weldon Martens

December 8, 2013 Prelude 9:00 a.m., Worship 9:30 a.m.

SECOND SUNDAY OF ADVENT

The mystery of God's dwelling...in peace

INVITING THE MYSTERY

9:00 a.m. Prelude Ken Rodgers, pianist

Introit *Alleluia* Buxtehude
Chancel Choir; director, William Eash
Erin Engle and Georgia Thiesen, flutes

Greeting John Waltner

Call to worship

Leader: Come and welcome one another in the name of Christ!

People: Let us awake to peace!

Leader: Live in harmony and join your voices in song.

People: Let us with one voice glorify God.

People: In Christ, we see the confirmation of God's promise.

All: O, the mystery of God's dwelling in our relationships!

***Hymn** *All praise to our redeeming Lord* **HWB 21**
Eleanor Kaufman, pianist

ENGAGING THE MYSTERY

Confession and lighting the Advent candle

Alan and Sheri Lepard, Nicholas and Markus

Leader: The coming of Christ brings peace. Let us pause to remember the God who brings harmony from dissonance and speaks life into our dead places. Let us confess the violence of our fractured relationships. The second Advent candle is the candle of peace.

All: In this light we receive forgiveness, knowing that God dwells with us in peace.

Hymn *Hope is a candle* (stanzas 1-2) **STS 15**
(children come forward during hymn)

Time with children Carol Flickinger

Appreciation for Nicole Smith - Bethel College intern

Susan Wheeler

Old Testament reading Isaiah 11:1-10

Anthem *Blessed be the Lord* [HWB 179] Chancel Choir

Gospel Reading Matthew 3:1-12

Scripture response:

Leader: For the Word of God that gives us peace,

All: Thanks be to God!

Sermon *Repent!* Weldon Martens

CELEBRATING THE MYSTERY

***Hymn** *Hail to the Lord's anointed* **HWB 185**
(sing a cappella as directed)

Prayer of God's People

Offering

To learn more about BCMC or share a prayer request, please fill out a card from the pew rack and place in offering plate.

Offertory *Sing we now of Christmas* French, arr. Stevens

***Dedication hymn** *Gloria* (sing 3 times) **HWB 204**

*Dedication prayer

***Closing hymn** *May the grace of Christ* **HWB 423**

*Benediction

***Benediction response** *Alleluia* Buxtehude
Chancel Choir

***Postlude** *In all lands rejoice ye Christians* Schop, arr. Bach

*All who are able are invited to stand

HWB = Hymnal: A Worship Book

STS = Sing the Story

Welcome visitors and friends! May you sense God's presence at BCMC. Personal hearing devices are at the north sanctuary entrance. The Nursery (Rm 20 behind balcony) is available during worship for families with infants and toddlers. Following Time with Children, children receive activity bags to use during worship (return to baskets at the entrance as you leave). We invite members and visitors to fill out welcome/prayer cards located in pew racks and place them in the offering plates for response by pastoral staff.

Today is the second Sunday of Advent! The Call to Worship and Confession at the lighting of Advent candles is from Mennonite Church USA worship resources on the theme "O, the mystery of God's dwelling." We ponder with awe the coming of Jesus Christ, the Word made Flesh who dwells among us. As we move through this season, we await his return in the fullness of time, we recall how John the Baptist announced his ministry, and we prepare to celebrate his birth and revelation to the entire world!

Holiday events:

- Join the Kidron Bethel Village community today at 3:30 p.m., for Advent worship with hymn-singing led by Elvera Voth and readings and prayer led by chaplain, Eric Massanari.
- Benefit Christmas show for Harvey County Safe House, today, 4 p.m., Salem United Methodist Church, Newton with Heartland Ensemble.
- Lighting of the Green at Bethel College, tonight at 8 p.m. on the Green; refreshments follow in the cafeteria.
- Handel's Messiah - Sun., Dec. 15, 7 p.m. at First Mennonite Church.
- All are invited to the Mennonite Central Committee Center, 121 E. 30th St., North Newton, Tues., Dec. 17 from 3-6 p.m. Meet Michelle Armster, our new Transitional Executive Director, dedicate our new solar panels at 4 p.m., visit with staff, tour the MCC center and enjoy Christmas goodies!
- Dec. 19 Vada Snider and Karen Loucks will perform at Prairie Harvest, 601 N. Main St., Newton, at 6 p.m.; the BCMC Junior Choir performs at Prairie Harvest at 7 p.m.

Perspectives is a 15-session global mission course to meet Monday nights, 6:30-9:30 p.m. beginning Jan. 13 at Hesston Mennonite Church. The first class will be taught by James Krabill of Mennonite Mission Network on *The Living God Is a Missionary God*. For more information contact Alaina Kaufman at alainakaufman@yahoo.com or see perspectives.org.

Rocky Mountain Mennonite Camp registration is available for 2014 summer camps. Register for a resident or wilderness camp and receive the "Good Rate" after May 31, the "Better Rate" after March 1 (\$20 savings), or the "Best Rate" before March 1 (\$40 savings). Discount is automatically applied at registration. Register today at www.rmmc.org.

Camp Mennoscah has sweatshirts with the camp sign in white on black or dark brown that make great Christmas gifts. The cost is \$25 for youth sizes, \$30 for adult sizes, and \$35 for XXL. They also have mugs, tee shirts, and cookbooks. Contact the camp at 620-297-3290. **Summer staff applications** for 2014 are available on the camp website. Positions won't be filled until February, but early applications are welcome since interviews done in person are better for everyone and some folks are only in the Newton area for the holidays. Contact the camp at the above phone number if you have questions.

Anabaptist Mennonite Biblical Seminaries - Great Plains Extension invites you to informal "focus group" discussions about the future direction of the Extension. The sessions feature a short history of GPE, some program options and time to give counsel to the GPE Board in preparation for their January meeting. Choose one time: Thurs., Dec. 12 (12 noon to 1 p.m. bring your lunch; 7-8 p.m.); Tues., Dec. 17, noon-1 p.m. bring your lunch or 7-8 p.m. All discussions are in the Seminary classroom at 2505 N. Main, North Newton. For information, contact Dorothy Nickel Friesen, dnfriesen@ambs.edu or 283-7098, etc. 206.

Today

- 10:30 a.m.** Fellowship time with coffee served in Fellowship Hall
- 10:50 a.m.** Christian Education for all ages – Visitors welcome!
Children and youth Sunday school classes:
 - 2-3 year olds—Rm B-6; pre-K through 4th grade students—following snacks in Fellowship Hall, meet in Room B-8 for singing and story
 - 5th, 6th, 7th, and 8th grade students—Rm 26
 - Sr Hi Youth—Rm 22

Adult Sunday school classes:

- College students—Agape Center in Richert House, 2611 College Ave.
- Agape (Young Adults)—KIPCOR, 2515 College Ave.
- Bible Study—Rm 14—A study of *Ephesians*
- Catacombs—Rm B-5—*Mennonite Women in Ministry*, Dorothy Nickel Friesen
- Fine Arts—Rm 24—*Understanding the New Testament* video series
- Issues & Christianity—Rm 23—Discussion of issues and events
- Mosaic—Rm 20
- Open Circle—Rm B-7—Sermon reflection and response
- Seekers—Rm 21—*Reading the Bible again for the first time*, Marcus Borg
- Sojourners—Rm 28—*Journey of Paul to Greece & Rome*, Weldon Martens

Monday, December 9

3:00 p.m. BCMC worship DVD—Kidron Bethel Health Care

Tuesday, December 10

- 8:30 a.m.** Construction site meeting – Room 14
- 1:00 p.m.** BCMC worship DVD—Kidron Bethel Assisted Living
- 7:00 p.m.** Associate Pastor Search Committee—Rm B-8

Wednesday, December 11

- 6:30 p.m.** Nursery Shower-Fellowship Hall- All are welcome!
- 6:30 p.m.** Cherub Choir (Rm 24) and Junior Choir (Rm 28)
- 7:00 p.m.** Senior High Youth group—Room 22
- 7:15 p.m.** Menno Ringers—Rm B-7
- 7:30 p.m.** Chancel Choir—Sanctuary
- 8:30 p.m.** Chancel Bells—Rm B-7



Thursday, December 12

4:00 p.m. Bethel College Relations Team—Agape Center

Saturday, December 14

- 7:30 a.m.** Mennonite Men's breakfast - Kidron Bethel Harvest Table. Spouses welcome. Program - women's quartette, Christmas music.
- 8:00 a.m.** Young and Middle Aged Men—Mojo's, Bethel College campus
- 4:30 p.m.** Mosaic Sunday school class caroling—Kreider's, 2825 N. Main, NN
- 6:45 p.m.** Parent's Night Out—Fellowship Hall

Sunday, December 15 –Third Sunday of Advent

9:00 a.m. Prelude by Vada Snider, Ellen Neufeld, Heidi Regier Kreider and Hesston High School singers

9:30 a.m. Worship with sermon by Heidi Regier Kreider; music by Cherub and Junior Choirs

10:30 a.m. Fellowship time with refreshments in Fellowship Hall

10:50 a.m. Christian Education for all ages



Help outfit the new nursery! A “Nursery Shower” to raise funds for the new nursery will be Dec. 11, beginning at 6:30 p.m., in the Fellowship Hall. A nursery update and refreshments will be provided! The goal is to raise \$3,000 to purchase new items for the enjoyment of parents and their young children. Contributions may be made to BCMC, designated “Nursery.” See you there!

Parents Night Out on Sat., Dec. 14 is sponsored by the BCMC Hospitality Commission, with child-care provided for young children 5:45–8 p.m. in Fellowship Hall.

Interested in learning more about BCMC, or becoming a member of the congregation? An orientation class will be offered in several Sunday-afternoon sessions in January and/or February 2014. If you’d like to participate, please contact pastor Heidi Regier Kreider at 283-3667 or heidi.bcmc@sbcglobal.net. Class meeting schedule will be set once participants are confirmed.

Janet Stucky serving with Mennonite Mission Network in Benin, writes, “Thank you for your birthday wishes and messages. It meant so much to be remembered in many different ways.” See Janet’s latest prayer letter posted on the bulletin board in Fellowship Hall.

Join the Harvest of Love! This annual campaign runs Nov. – Dec., sponsored by Newton Ministerial Alliance and Salvation Army to gather non-perishable food and money to assist with needs in Harvey County. Make checks “Harvest of Love” and send to Salvation Army at 208 W. 6th St., Newton, KS 67114. You may also bring food items to BCMC and place them on the first pew under the balcony, near the south sanctuary entrance.



The Bible in 90 Days will be a BCMC Sunday school class to run Jan. 5 – Apr. 6, 2014, hosted by the Bible Study Sunday school class. Other individuals or

Sunday school classes are invited to join the Bible Study class in this journey through scripture! Participants will read through the Bible according to a daily schedule, with videos and discussion in Sunday school about the week’s readings, and the option to purchase additional resources. Contact the church office if you are interested in participating.

December 1 at BCMC: Attendance: 249. General Fund \$12,478.25; MCC Meat Canning \$20; Transfer-General \$5; *The Mennonite* \$35; Caring Fund \$350; Living Stones \$2,030; Flower Fund \$315, for 2014 budget \$4,040.

The Anabaptist Mennonite Biblical Seminary - Great Plains Extension will offer a 3-credit course *Congregational Song* (audit option) in spring semester in four weekends: Feb. 7-8, March 7-8, April 4-5, and April 25-26--with the Friday class from 6:30 - 9:30 p.m. and the Saturday class 8:30 - 4:30. Dr. Cynthia Neufeld Smith is professor; classes will be at Shalom Mennonite Church, Newton. Choir directors, organists/pianists, pastors, worship leaders and singers are urged to sign up by Jan. 6 (saving \$50). Register online; www.ambs.edu/forms or contact Dorothy Nickel Friesen, dnfriesen@ambs.edu; 316-283-7098, etc. 206 for information.

Evening manager needed at Newton Et Cetera Shop. Qualifications: Availability 4-8 pm Mon.-Fri., communication/people skills, ability to multi-task, computer/technical skills, values in line with Mennonite Central Committee, cash register skills, bilingual or cross-cultural experience, ability to lift 25 pounds and stand 2-3 hours; college graduate preferred. Experience in advertising, design, or retailing a plus. Begins Jan. 6, 2014. To apply, email resume, job history and three professional references to newtonetc@sbcglobal.net by Dec. 16.



It’s time to renew our group subscription plan to *The Mennonite* for 2014. *The Mennonite*, monthly magazine for Mennonite Church USA, has articles that challenge and inspire, news that connects readers to the larger Mennonite community, and more. If you are interested in joining our group plan, fill out this form; attach payment of \$37.00, made out to BCMC with “*The Mennonite* subscription” in the memo line. **Place this form, along with your payment, in the offering plate or bring to the church office no later than Sunday, December 15.**



I am subscribing to *The Mennonite* through the BCMC group plan
Name _____