

Prayer Requests

Mennonite Mission Network: In this season of “Peace on earth, goodwill to all people,” Nancy Frey and Bruce Yoder of Mennonite Mission Network request prayer for peace in Burkina Faso, where terrorist groups have become more active. May the Mennonite Church show the way to the Prince of Peace.

Western District Conference: Give thanks for the gift of God’s Word-made-flesh in Jesus, and for the many ways in which WDC congregations make God’s love tangible in our world today.

This congregation: Give thanks for the children and youth among us, and pray for wisdom to learn from them as we walk alongside them.

To request prayer or a visit, or if a family member is hospitalized, please contact the church office or a pastor so that visits and prayer support can be offered. Names of people receiving medical care are printed in the BCMC bulletin only by permission of the patient or a guardian/family-member. This is part of the caring network at BCMC, which includes support among members of Sunday school classes and small groups, as well as the Prayer Network, Visitation Team, and Caring Fund sponsored by Deacon Commission.

Bethel College Mennonite Church welcomes into fellowship and membership all persons who confess faith in Jesus Christ, without regard to their race, ethnic background, gender, age, sexual orientation, education, ability, and other factors which give rise to discrimination and marginalization.

Bethel College Mennonite Church, 2600 College Avenue, Box 364,
North Newton, KS 67117 Phone: 316-283-3667 Fax: 316-283-2079

Email: office@bethelcollegemennonitechurch.org

Website: bethelcollegemennonitechurch.org

Church office hours: 9 am–12:30 pm Mon–Fri; 1:30 –5 pm Mon—Thur

Church office is closed Friday afternoons

Building is locked weekdays at 5 pm unless evening activities are scheduled

Saturdays—building is locked; Sundays—building is locked at 2 pm

Notary public service is available in the church office

Pastor: Dawn Yoder Harms, Day off : Monday—Phone: 316-283-3667
cell phone: 316-212-1847; Email: dawn@bethelcollegemennonitechurch.org

Bridge Associate Pastor for Faith Formation: Susan Jantzen—Day off: Friday
Phone: 316-283-3667; cell phone: 620-877-7923;

Email: sjantzen@bethelcollegemennonitechurch.org

Associate Pastor for Pastoral Care: Susan Wheeler; Day off Friday
cell phone: 316-706-0887; Email: susan@bethelcollegemennonitechurch.org

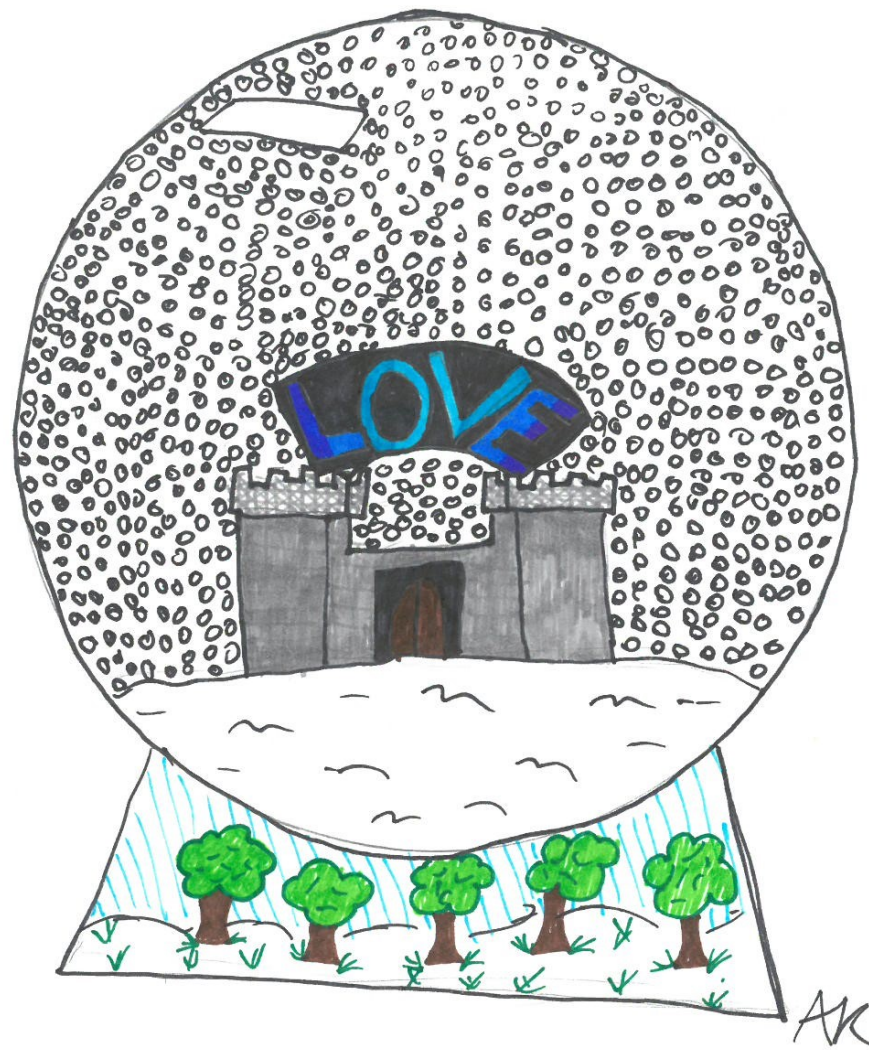
Admin. Assistant: Monica Lichti, office@bethelcollegemennonitechurch.org

Custodian: Michael Crawford, 316-727-9840; day off Tuesday

Music Coordinator: Barbara Thiesen **Chancel Bells Director:** Vada Snider

Menno Ringers Director: Suzy Burch **Chancel Choir Director:** William Eash

Junior Choir Director: William Eash **Cherub Choir Director:** Addie Regier



Bethel College Mennonite Church

December 23, 2018

Fourth Sunday of Advent

Bethel College Mennonite Church
December 23, 2018 — Prelude 9:00 am; Worship 9:30 am
Advent 4

GATHERING

Prelude by the Garber Family

Ron Garber, Gyles Garber, Nathan Garber, Kendrick Weaver, vocals
 Caleb Garber, cello and Verlene Garber, organ/accompanist

Call to worship, prayer Anjela Rodriguez
 Leader: Mary is with child! God's long-awaited promise is being fulfilled!

People: Rejoice in his name! Emmanuel, God be with us!
 Leader: The little baby in his mother's womb, he will be the Savior of this hurting world.

People: Bringing us new life, filled with joy and peace, calling us to faith and action.

ALL: Praise be to God. Alleluia! Amen!

Lighting the Advent Candle *Come, Light of the world* **STS 3**
 Nicole Tran and Alli Tran, candle lighters; Verlene Garber, keyboard

*Opening Hymn *Break forth, O beauteous heav'nly* **HWB 203**
 (children come forward during hymn)

LISTENING FOR GOD'S WORD

Children's conversation Carol Flickinger

Scripture reading Isaiah 30:19-21, 29 **Ben Gering**
Isaiah 60:1-3 **Emma Claassen**

Song of expectation *Peace before us* **STS 16**
 verses 1, 2, 3, 4 and 5

Prayer of the People Senior High Youth Group

Offering
During the offering, please sign and pass the friendship register in your pew. When all have signed, return it to the first person.

Offertory *Now Sing We, Now Rejoice* **Manz**

*Dedication hymn *My soul is filled with joy* **STJ 13**
 verses 1, 3, 5

*Dedication prayer Christa Kondziola

HWB = *Hymnal: A Worship Book* (in rack)
STS= *Sing the Story* (in rack) **STJ**=*Sing the Journey* (at end of bench)

GREATEST STORY EVER!

Drama

Response in Song

Introduction

O come, O come, Immanuel **HWB 172**
Children-verse 1; congregation verse 2

Scene 1

We Three Kings
Congregation sings verse 1 and refrain
 We three kings of Orient are; bearing gifts we traverse afar
 Field and fountain, moor and mountain, following yonder star.
 O, star of wonder, star of light, star with royal beauty bright,
 Westward leading, still proceeding, guide us to thy perfect light.

Scene 2

O little town of Bethlehem **HWB 191**
Congregation sings verse 1

Scene 3

Silent Night
 Junior Choir; William Eash, director; LaVera Schrag, accompanist

Scene 4

Hark! The Herald Angels **HWB 201**
Congregation sings verse 1

Scene 5

What Child is This
 Cherub Choir; Addie Regier, director; Sharon Koehn, accompanist

Scene 6

Go tell it on the mountain
Congregation sings refrain two times through
 Go, tell it on the mountain, over the hills and everywhere:
 Go, tell it on the mountain, that Jesus Christ is born!

Scene 7

Joy to the world **HWB 318**
Children verse 1; Congregation verse 2

Scene 8

O come, all ye faithful **HWB 212**
Congregation verses 1 and 3

SENDING

*Benediction Dawn Yoder Harms

*Benediction response

*Postlude

*Please stand in body or in spirit

Responses from our Journey Forward Wednesday evening sessions have been submitted to MCUSA via the Journey Forward feedback survey which had a December 31 deadline. Thank you, again, for your time and careful participation this past fall.

Five Times Harder will perform a holiday concert at First Mennonite Church of Hillsboro, Dec. 30, 4 pm. They will perform Christmas music in styles ranging from classical to bluegrass to folk. No admission charge. Tom Harder is pastor at First Mennonite Church, Hillsboro and Lois Harder is Bridge Pastor at Alexanderwohl Mennonite Church, Goessel.

The Bethel College advancement/development office invites you to a holiday open house, Dec. 31, 9 am-3 pm. Come to visit with staff, enjoy holiday treats and a warm beverage – and make your year-end donation. The office is on the main floor of the Administration Building on campus.

Kauffman Museum is open through the holidays (closed Mondays, Christmas Day, and New Year's Day): hours 9:30 am—4:30 pm weekdays, Sat-Sun., 1:30-4:30 pm. Visit the current special exhibit "Better Choose Me: Collecting and Creating with Tobacco Fabric Novelties, 1880-1920," featuring the collection of the late Ethel Ewert Abrahams. See www.bethelks.edu/kauffman/ or the Kauffman Museum Facebook page for more information.

The Kansas Mennonite Men's Chorus 2019 season is coming near, and it's time to register. Please send in your registration form to Joe Peters, or the address on the form. If you do not have a form, check out the poster on the church bulletin board. The first rehearsal is Jan. 27, 2019. Come join us. "We sing that others may live"! ~ *Joe Peters, BCMC KMMC Contact*

Camp Mennoscah : online: campmennoscah.org or 620-297-3290
Join us for praise and worship songs from evening worship at summer youth camps at Camp Dec. 28, 3-6 pm, in the Dining Hall. Enjoy classic *Sunday* camp sandwiches, hot chocolate, and time by the campfire/fireplace, and TP the Christmas tree! We'll metaphorically TP our Christmas Tree with your donations of toilet paper or paper towels. Cash or checks for 4-square/gaga balls are welcome, too. RSVP to 620-297-3290 or office@campmennoscah.org by Dec. 26 so we know how many sandwiches to fix--and tell us about any food allergies

The Neuf 9K and 2 mile run will be Jan. 12, 2019 to honor the memory of Russ Neufeld, a former Mennonite Church USA and Hesston College employee. The race will start at 10 am outside of Mojo's Coffee Shop on the campus of Bethel College, North Newton. The Neuf will raise funds for the Leukemia and Lymphoma Society, and the Russ Neufeld memorial scholarship at Hesston College. Register & read other details about the race at www.runtheneuf.neuf.ca. Join us for this fun community event!

The Next Week at BCMC: December 23—30, 2018

Sunday, December 23, 2018

10:30 am Fellowship Time in the Gathering Place

No Sunday School today

Monday, December 24—Christmas Eve

2:30 pm BCMC worship DVD—Kidron Bethel Health Care

11:00 pm **Service of Lessons and Carols—Sanctuary**

Tuesday, December 25—Merry Christmas!

Church building will be locked—Have a blessed Christmas!

Wednesday, December 26—No choir practices today

Thursday, December 27

4:00 pm Staff Congregation Relations Committee—Rm B7

Saturday, December 29

4:30 pm Wedding in the BCMC sanctuary

Sunday, December 30—Christmas Sunday

10:00 am **Note the later time for the beginning of worship this Sunday**

Worship with sharing by Nathan Toews and Leidy Muñoz, Mennonite Central Committee country representatives in Bolivia; music by Suzy Burch and Howard Glanton, classical guitars

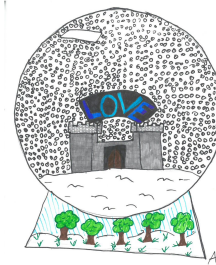
11:00 a.m. Fellowship and coffee—**bring goodies to share**

No Sunday school

We hope you find our Christmas drama a worshipful experience.

We are grateful to:

- Junior and Cherub Choirs, directors and accompanists
- Sunday School Teachers Nursery to High School
- All children and youth
- Anne Koontz for the art on the cover
- All parents and caregivers
- Tim Hodge for writing and directing drama
- All who made costumes in years past
- The congregation for participating
- The Mosaic Sunday school class who purchased the candy for the candy sacks and the Senior High Youth group who packed and handed out the sacks
- To the tech team (Francis Toews and Ben Lichti)



Merry Christmas!

Welcome visitors and friends! May you sense God's presence at BCMC.

Personal hearing devices are at the north sanctuary entrance.

The nursery at rear of sanctuary is available during worship for families with infants and toddlers. Following Children's conversation, children receive activity bags to use during worship (return to baskets at the entrance as you leave).

Thanks for making Advent a special season at BCMC: Worship Commission coordinated candle lighting; the Worship Decoration Committee decorated the sanctuary; and many musicians rehearsed seasonal music. Sanctuary banners designed by Bob Regier have marked our movement through Advent, presenting a gradual crescendo of light and color, along with polarities of horizontal, vertical and diagonal lines and finally intersection, providing possibility for insight, discovery and renewal. **Thank you to all who contributed poinsettias for the sanctuary** – you may select one to take home after the service today or after the 11 pm service on Christmas Eve or if you can, leave it for the service on Dec. 30. If you would like to have a list of who donated the poinsettias and in memory/honor of whom, there are half sheets in the literature rack in the foyer. **On Dec. 30, there will be the traditional fellowship time after the 10 am worship service.** Please bring goodies to share and enjoy! There will be no Sunday school on Dec. 30.

The church office will be closed Christmas Day, Dec. 25, and Wed., Dec. 26.

Dec. 27 and 28 the office will be open 9 am to 12 pm, closed in the afternoons. The church building will be open Dec. 26-28, although not all of the doors will be unlocked. If you wish to enter the building on those days, use the south (automatic) doors or the west, front doors. Pastor Dawn Yoder Harms will be on vacation from Dec. 28, 2018—Jan. 1, 2019. For emergencies call 316-212-1847 (Dawn Yoder Harms) or 316-706-0887 (Susan Wheeler).

A New Year Memorial Service will take place at BCMC on Sun., Jan. 6, at 4 pm.

This annual service is an occasion to light candles in remembrance of BCMC members and other loved ones who died in 2018. BCMC members, family, friends and community members are all welcome.

The BCMC Witness Commission invites you to participate in this year's Advent Project (which runs through Dec. 30) benefiting New Hope Shelter. There are flyers in the Gathering Place listing current needs. Gift cards from Et Cetera Shop in the amount of \$10 are also welcome. Items will be collected in a container located under the balcony each Sunday.

Pray for those in medical care: Maureen Hean has moved to the Schowalter Villa, Progressive Recovery Academy; Mel Voth, Kansas Spine & Specialty Hospital

Community Playschool is grateful for the gifts of this congregation throughout the year. At this time I offer a special thank you for the Everence Sharing Fund grant that we have received. This is a matching grant made possible by the contribution from the BCMC yearly budget to Community Playschool. Our organization depends on both individual and corporate gifts such as this to continue to be able to provide a quality educational program at an affordable cost to families who need it in the Harvey County area. Once again we have an eager group of children here at Playschool and we find ourselves seeing the progress in their development that we are here to facilitate. It is rewarding to be able to continue to provide a place for this to happen! With Gratitude ~ *Jeanette Leary, director*

Worship Commission is seeking several persons interested in coordinating the hanging of advent banners. This is a perfect opportunity for those willing to climb a ladder and who can invest a small amount of time each December! If interested, or if you have questions, contact a member of the Worship Commission— Mary Ann Boschmann, Esther Kreider Eash, Roger Juhnke, John Kliewer, Matt Schloneger, or Barbara Thiesen.

Youth Group Fundraiser: Menno's Best Coffee, 12oz bag for \$15. Details and order sheet in the Gathering Place after the service, or ask any youth group member. Funds will be used to go to Convention next summer.

Western District Conference year-end snapshot: Last January, over 130 people gathered to launch WDC's Year of Evangelism and learn authentic ways to share the Jesus story in our own contexts. It was energizing to hear stories of relationships healed, community needs met, and spiritual lives transformed by love lived out through Jesus' friends. The Year of Evangelism is just one way your gifts to WDC empower congregations to witness and invite others to faith in Jesus Christ, dwell in just and loving relationships, and connect to God's mission in the world! As we work together to meet WDC's budget goal for the year, we request your donations online at www.mennowdc.org or sent to WDC at PO Box 306, North Newton, KS 67117. Thank you for planting these seeds of hope!

Centering Prayer will not meet Dec. 24 or Dec. 31 but will resume, Jan. 7, 2019. Centering Prayer meets from noon to 1pm most Mondays at the Agape Center in Richert House on the Bethel College campus and is open to anyone. For more information, contact Melanie Zuercher, mzuercher@bethelks.edu, or Nathan Koontz, nathan@hutchfmc.org

<p>Dec. 16 at BCMC Attendance 264. General Fund \$20,191.67; Living Stones \$1,875; MCC Meat Canning \$200; Plant Fund \$125; Sr Hi Youth \$231; Gen Fund 2019 \$7,225; <i>The Mennonite</i> \$148; Flower Fund \$7.50; Kitchen-Coffee \$28.</p>
