

Prayer Requests

Mennonite Mission Network: Mennonite Mission Network's Journey International participants are processing the anti-racism component of their orientation, recently held at Community Mennonite Church in Markham, Illinois. Pray for them as they integrate this cross-cultural learning and as they prepare to travel to assignment locations in Ecuador and Indonesia.

Western District Conference: Give thanks for WDC Annual Assembly last weekend, and all who gave their time and resources to plan, lead and participate in this special event.

This congregation: Give thanks for the ministry of Camp Mennoscah in the lives of our children and youth, for those who have volunteered during summer camps, and for Camp leadership. Pray for Michael Unruh, the new Executive Director for Camp Mennoscah.

To request prayer or a visit, or if a family member is hospitalized, please contact the church office or a pastor so that visits and prayer support can be offered. Names of people receiving medical care are printed in the BCMC bulletin only by permission of the patient or a guardian/family-member. This is part of the caring network at BCMC, which includes support among members of Sunday school classes and small groups, as well as the Prayer Network, Visitation Team, and Caring Fund sponsored by Deacon Commission.

Bethel College Mennonite Church welcomes into fellowship and membership all persons who confess faith in Jesus Christ, without regard to their race, ethnic background, gender, age, sexual orientation, education, ability, and other factors which give rise to discrimination and marginalization.

Bethel College Mennonite Church, 2600 College Avenue, Box 364, North Newton, KS 67117 Phone: 316-283-3667 Fax: 316-283-2079

Email: office@bethelcollegemennonitechurch.org

Web site: bethelcollegemennonitechurch.org

Church office hours: 9:00 a.m.–noon on Mon – Fri; 1:00 –5:00 p.m. on Mon – Thur

Church office is closed on Friday afternoons

Building is locked daily at 5 p.m. unless evening activities are scheduled

Notary public service is available in the church office

Pastor: June Thomsen, june@bethelcollegemennonitechurch.org;

Home phone 316-239-8747

Day off is Friday; office hours Monday-Thursday 9 a.m. to noon

Associate Pastor for Pastoral Care: Susan Wheeler

susan@bethelcollegemennonitechurch.org

Home phone 620-327-2295, cell phone 316-706-0887; day off is Monday

Associate Pastor for Faith Formation: John Tyson,

john@bethelcollegemennonitechurch.org; Phone: 316-283-3667

day off is Monday

Administrative Assistant: Monica Lichti, office@bethelcollegemennonitechurch.org

Custodian: Michael Crawford, 316-727-9840; day off is Tuesday

Chancel Bell Choir Director: Vada Snider

Menno Ringers Director: Suzy Burch **Chancel Choir Director:** William Eash

Junior Choir Director: Monica Schmidt

We are
God's People
and the
Sheep of His
Pasture



**Bethel
College
Mennonite
Church**

GATHERING

***Hymn** *Sing praise to God who reigns* **HWB 59**
(children come forward during hymn)

LISTENING FOR GOD'S WORD

Children's conversation Rachel Pannabecker

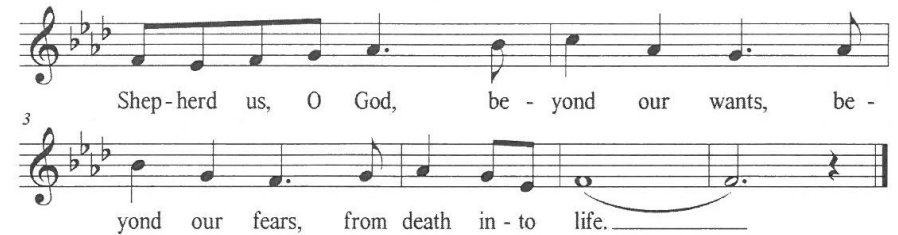
Scripture readings: Psalm 23:1-4, Luke 15:1-7
Tim Schrag,
Pastor of the Mennonite Church of Normal, Illinois

Sermon	<i>Through the dark valley. . .</i>	June Thomsen
	Psalm 23 Rachel Poling	
	Psalm 23 Elizabeth Raid	

RESPONDING IN FAITH

***Hymn** *He leadeth me* **HWB 599**

Prayer of God's people



Offering

During the offering, please sign and pass the friendship register in your pew. When all have signed, return it to the first person.

Offertory *Nothing is lost on the breath of God* Gibson
Alahna Wheat

***Dedication hymn** *We give thee but thine own*, v. 1 **HWB 384**

***Dedication prayer**

SENDING

Hymn *God be with you* **HWB 430**

***Benediction**

***Benediction response**

*Postlude	<i>Postlude on “Old Hundredth”</i>	Bock
------------------	------------------------------------	------

HWB = *Hymnal: A Worship Book*

STJ= Sing the Journey

Welcome visitors and friends! May you sense God's presence at BCMC. Personal hearing devices are at the north sanctuary entrance. The nursery at rear of sanctuary is available during worship for families with infants and toddlers. Following Time with Children, children receive activity bags to use during worship (return to baskets at the entrance as you leave).

Centering Prayer continues every Monday from noon-1 p.m. in Agape Center in Richert House on the Bethel College campus. All are welcome. For more information, contact Nathan Koontz, 2nathankoontz@gmail.com, or Melanie Zuercher, mzuercher@bethelks.edu.

Taize Evening Song and Healing Prayers is the 3rd Sunday of each month (this month, August 21) from 6-7 p.m. in the nave of St. Matthew's Episcopal Church, 2001 Windsor Drive, Newton. All are welcome!
~ Loretta Baumgartner

Faith & Life Bookstore, 606 North Main in Newton, will have a Church Librarian's Day Sat., Aug. 27 - Hear about new books and staff favorites from the past year and get a sneak peek at upcoming releases. All orders placed by attendees will receive a 25% discount. Library Committees welcome! Lunch will be provided free of charge. Please RSVP by Wed., Aug. 24 to info@faithandlifebookstore.com or 316-283-2210.

Pick-up date for peaches ordered from the Mennonite Central Committee, North Newton, is Aug. 18, between 4 p.m. and 6:30 p.m. at MCC, 121 E. 30th Street, North Newton.

Camp Mennoscah Announcements—Contact Info: 620-297-3290 or office@campmennoscah.org

- **The annual Camp Sing** will be Aug. 7, 6:30 p.m. at Grace Hill Mennonite Church, Whitewater.
- **Mental Health Spiritual Retreat** is Sept. 4-5, for all who are affected by mental illness. Brochure at www.campmennoscah.org under Retreats.
- **Work & Play Camp** and Camp Mennoscah's Annual Meeting have joined together for five days of making Camp Mennoscah better. Put Sept. 16-21 on your calendar; Sept. 18 is the annual meeting. Tasks for all ages and skills will be available. Register online at www.campmennoscah.org

Call for seminar proposals: If you have an exciting ministry or interesting resource to share with others attending the Mennonite Church USA Convention, July 4-8, 2017, in Orlando, FL, the Mennonite Church USA convention planners have begun collecting seminar proposals. For more information and to submit seminar proposals, see <http://convention.mennoniteusa.org/seminars/> At the bottom of the page is a link to the submission form. Proposals are due by August 12, 2016.

This Week at BCMC: August 7-August 14, 2016

August 7, 2016

10:30 a.m. There are no Children's Sunday school classes today

10:30 a.m. Fellowship in the Gathering Place; water available

10:50 a.m. Faith Formation—Visitors welcome!

- Adult Sunday school elective in the sanctuary: Western District Conference reporting by BCMC delegates to the assembly
- Agape—Fellowship Hall
- Bible Study—Does not meet during the summer months
- Catacombs—Rm B-5—Will attend adult elective
- Fellowship—Rm B7
- Fine Arts—Rm 24—A study of the book, *Biblical Literalism: A Gentile Heresy* by John Shelby Spong
- Issues & Christianity—Rm 23—*Great Figures of the New Testament*, dvd
- Mosaic—Rm 20—Sermon reflection and other current topics
- Open Circle—Rm 28—Sermon reflection and response
- Seekers—Rm 21—Will attend adult elective
- Sojourners—Chapel—members may attend elective

Monday, August 8

2:30 p.m. BCMC worship DVD—Kidron Bethel Health Care

4:00 p.m. Study of Officer's Positions Task Force—Rm 14

6:30 p.m. Community Playschool Board—Rm 14

7:00 p.m. Facilities Committee—Fellowship Hall

Tuesday, August 9

1:00 p.m. BCMC worship DVD—Kidron Bethel Assisted Living

7:00 p.m. Finance Committee—Rm B7

Worship Commission—Rm 14

Wednesday, August 10

8:00 a.m. Staff Worship Planning—Rm 14

Thursday, August 11

10:00 a.m. Bulletin announcement deadline

2:00 p.m. BCMC worship DVD—Schowalter Villa

Sunday, August 14

Worship with sermon by John Tyson; music by the Sunflower Trio (Matthew Schloneger, Rebecca Schloneger, Ken Rodgers). Fall Children's Sunday School begins. There will be a potluck for children and their families and Children's Sunday school teachers in Fellowship Hall at noon.

The Deacon Commission is inviting contributions to the **above-budget Caring Fund** to assist congregation and community members with current needs such as utility and rent expenses, food or other emergencies. Contributions may be put in the regular offering, with checks made out to BCMC and designated "Caring Fund."

There is an opening for Cherub Choir Director (grades K-4) . Contact the church office for a full job description or with questions.

We offer sympathy to David and Cynthia Linscheid, Joel Linscheid and Aaron and Caitlin, Adam and Coen Linscheid, and family, on the death of Ruth Linscheid, August 4 at Kidron Bethel. Plans for the memorial service will be announced.

The new Faith Formation year for children and youth will begin August 14. Children, youth, families, and teachers are invited to a potluck in Fellowship Hall following the Sunday school hour!

The annual ice cream and dessert social with Bethel College students is August 28 at 7 p.m. BCMC friends are invited to bring a dessert to share.

Living Stones Update—Entrance Ramp Update: Construction on the new entrance ramp began Tuesday, July 26. This will make the front entrance inaccessible for the next several weeks. Please plan to use one of the other entrances for the building. Thanks for your cooperation during this process.

BCMC Library News: Sun., Aug. 7 is the last day to check out a book or two or three for several weeks. The library will be closed for renovations. New carpet will be placed in the offices and the library. The books will be stored in boxes and moved out. Furniture and other items in the office will be temporarily placed in the library. Watch for details about the opportunities for volunteers to help with the books. Thanks for your cooperation. ~ *Library Committee*

BCMC youthful men, their sons and friends are invited to the 14th annual campout at Walnut Grove Campground at Harvey County Park West, Fri. eve. to Sat. mid-morning, Aug. 26-27. Arrive Fri. 6:30 p.m. or after. Stay only for the evening, if you wish, or overnight. Bring your own meat plus a side dish and drink to share for supper around 7:30 p.m. Fri., items for recreation, camping gear. If staying overnight, bring breakfast food to share. Contact Dave Linscheid, 316-727-6967; dave.linscheid@gmail.com

BCMC will be helping at the Harvey County Homeless Shelter until Aug. 9. HCHS has also made a list of some of their needs: Sliced bread, snack items for lunches, Sinus/allergy medications, Melatonin, Black sharpies, PineSol, Brown paper lunch bags, 50 gallon trash bags, shampoo, conditioner, deodorant, coffee, non-dairy coffee creamer. If you can help with any of these items, items can be delivered to HCHS at 900 W. Broadway, Bldg. 7.

The Decoration Committee invites you to provide flowers for a Sunday morning of your choice. You may pick a Sunday that is meaningful for you. There is a sign-up sheet posted on the bulletin board. If you do not wish to order the flowers, you can simply sponsor a Sunday and the Decoration Committee will order the flowers. Let the office know if you would like to sponsor a particular Sunday. ~ *Carol Buller, chair*

The annual Womens/Girls Retreat planned by Western District Conference and South Central Conference will be at Camp Mennoscah September 9 - 11. Katherine Goerzen, pastor at Tabor Mennonite Church, will be the featured speaker on *Blessed, Beautiful, and Beloved*. New this year are giant coloring sheets (bring your crayons, colored pencils, or markers) and catered meals. Music will be provided by Cousins Four. Activities are available for girls age 3rd grade through high school. Registration forms and a retreat flyer are on the church bulletin board. Deadline for registration is August 22. Come for part or all of the retreat which begins Friday evening and ends Sunday after lunch. Carpooling: If interested, contact Marlene Faul, 283-3342, marlene.violet@gmail.com for either needing a ride or if you can take others.

Alumni and friends of Hesston College are invited to participate in an event with the Topeka Symphony Orchestra and Hesston College choirs at Alcove Spring Historic Park in Marshall County, KS, near Marysville, Sept. 4. Orchestra on the Oregon Trail is an afternoon experience with music and activities for all ages, with the concert following at 7 p.m. The orchestra and vocal guests span the musical spectrum of bluegrass, country western, Americana and more. A buffet dinner will be served for an additional charge. Tickets are \$60 for adults and \$15 for children 12 and under and should be purchased as soon as possible. Go to www.OOOT.org to buy tickets and for more information.

The annual Mennonite Central Committee Flatlander Bike Ride will be Sat., Sept. 17, originating at the MCC offices, 121 E. 30th, North Newton. This year's ride raises funds for an MCC water development project in Mozambique. Rides of approximately 35, 45 and 65 miles as well as a shorter family ride are planned. Brochures are on the bulletin board and available on the MCC website, mcc.org/get-involved/events/mcc-flatlander-bicycle-ride. Register on-line at the site also. Bikers and contributors are needed! Contributions for this project from non-bikers should be made payable to: MCC, "Flatlander Bike Ride" on the memo line; send to MCC, PO Box 235, North Newton, KS 67117.

July 31 at BCMC: Attendance 200. General Fund \$10,171.40; Living Stones \$1,225; Transfer-General \$441; Caring Fund \$200; Transfer-Funeral \$408.69.
--