

Prayer Requests

Mennonite Church USA: Reuben Mgodeli is providing leadership for Bethany Bible School, a Mennonite Mission Network partner in South Africa. Pray for him and his wife, Phumeza, as they model discipleship at home and in their public ministries. Pray also for Bethany students as they share what they learn with their home congregations.

Western District Conference: Pray for our Junior High Youth and Leaders gathering, "Know Jesus," hosted by Hesston College and the Western District and South Central Youth Ministry Team, January 31-February 1.

This congregation: Pray for Bethel College students, faculty and staff, as they begin the Spring semester this week.

If you would like to request prayer or a visit, contact the church office or one of the pastors. The Prayer Network and Visitation Team are ministries sponsored by the Deacon Commission.

Bethel College Mennonite Church welcomes into fellowship and membership all persons who confess faith in Jesus Christ, without regard to their race, ethnic background, gender, age, sexual orientation, education, ability, and other factors which give rise to discrimination and marginalization.

Bethel College Mennonite Church, 2600 College Avenue, Box 364

North Newton, KS 67117

Phone: 316-283-3667

Fax: 316-283-2079

Email: office.bcmc@sbcglobal.net

Web site: bethelcollegemennonitechurch.org

Church office hours: 9:00 a.m. – noon on Mon – Fri; 1:00 –5:00 p.m. on Mon – Thurs.

Building is locked daily at 5 p.m. unless evening activities are scheduled.

Notary public service is available in the church office.

Pastor: Heidi Regier Kreider, heidi.bcmc@sbcglobal.net

Home phone 284-0448, day off is Friday

Associate Pastor for Pastoral Care: Susan Wheeler on sabbatical Jan. 1-Feb.7, 2015;

Harold Thieszen providing pastoral care ministry during sabbatical,

Cell phone: 316-772-8705; hethieszen@gmail.com

Associate Pastor for Faith Formation: John Tyson, john.bcmc@sbcglobal.net

Cell phone 215-896-1047; day off is Monday

Administrative Assistant: Monica Lichti, office.bcmc@sbcglobal.net

Custodian: Michael Crawford, 316-727-9840

Music Coordinator: Rebecca Schloneger, 316-772-6084

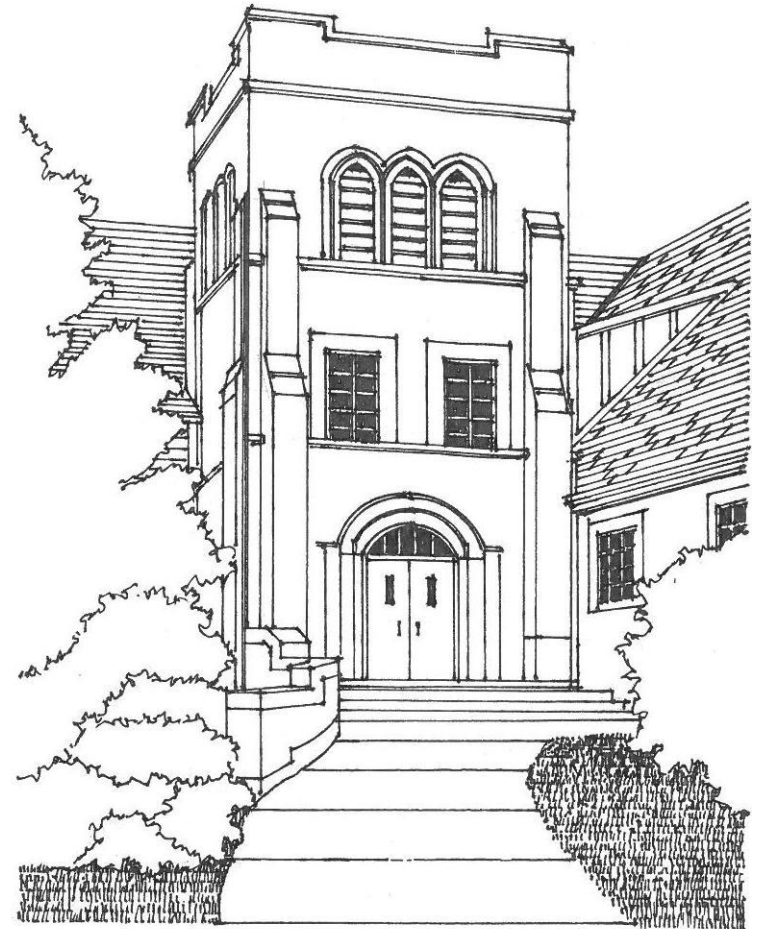
Bell Choir Director: Vada Snider, 283-5231

Chancel Choir Director: William Eash

Cherub Choir director: Jill Siebert

Junior Choir director: Elizabeth Schrag

January 18 at BCMC: Attendance: 228. General Fund \$9,217.63; Living Stones \$2,740; Media Supplies \$15; Plant Fund \$75; *The Mennonite* \$74; Caring Fund \$300; Inez Koehn Memorial \$55.



Bethel College Mennonite Church
January 25, 2015

This Week at BCMC: January 25 – February 1, 2015

It's time for men to register for a new season of singing with the Kansas Mennonite Men's Chorus; an opportunity to combine the love of singing with making a contribution to the mission of the church. Registration forms are available on the bulletin board, or call Omar Voran.

Mennonite Church USA convention and delegate assembly will be June 30-July 5, 2015 in Kansas City. The BCMC Gifts Discernment Committee is in the process of appointing delegates to represent our congregation at the delegate assembly. For info: www.MennoniteUSA.org/convention.

The Anabaptist Vision and Discipleship Series (AVDS) conference is Feb. 13-15 at Hesston College, "Overcoming Evil: Ordinary People Making a Difference." Speaker is Father John Dear, internationally known as a voice for peace and 2008 Nobel Peace Prize nominee. Additional information/registration at www.hesston.edu/avds or call 620-327-8109. Ted Swartz of Ted & Co. TheatreWorks brings the scriptures alive in "I'd Like to Buy an Enemy," Sat., Feb. 14, 7 p.m., Hesston Mennonite Church. Tickets are \$12 general admission at the door, or free with conference registration.

Newton Et Cetera Shop is seeking a half-time back door receiver and general maintenance person. This is a paid position for 1-5 p.m. Mon.-Fri., good with people, able to lift heavy items, dependable, values in line with Mennonite Central Committee. Spanish language skills a plus. To apply, call 283-9461.

Young Adult Snow Camp is Feb. 20-22 at Rocky Mountain Mennonite Camp with group games, broomball, human curling, great discussion based worship times, singing, and many moments outside enjoying the beauty of creation. The cost is \$74. Online registration available at www.rmmc.org or call 719-687-9506.

The Mennonite Agri-Urban Banquet and annual meeting will be held Sat., Feb. 7, 6 p.m. at Eden Mennonite Church, rural Moundridge. Everyone involved or interested in the Agri-Urban program is invited. No signup is required.

Everyone is invited to a special Mennonite Central Committee learning event on Sat., Feb. 28, 9 a.m. in the Luyken Fine Arts Center Bethel College. MCC Central States program staff is teaming up with MCC U.S. staff to provide resources and a time of mutual learning on the topics of: immigration, sexualized and gender based violence, Doctrine of Discovery and Indigenous people and militarization within the U.S. Lunch at Mojo's Coffee Shop will follow the seminars. If you plan to attend, please email tinaschrag@mcc.org or call 316-283-2720.

StoryTime at the Western District Conference Resource Library begins on Wed. Feb. 5 at 10 a.m. Join in the fun with Alisha Baughman. Call 283-6300 to sign up your preschooler or for more information.

Today

10:30 a.m. Fellowship time in the Gathering Place; coffee/water available

10:50 a.m. Christian Education – Visitors welcome!

- 2-3 year olds through 4th grade—meet in Fellowship Hall for snack, then Room B-8 for singing before going to classrooms (2-3 year olds in B-6; Pre-K—1st grade in B-4; 2nd—4th grade stay in B-8)
- Grades 5-8—Rm 26 • Senior High Youth—Rm 22

Adult classes:

- Agape—KIPCOR at 2515 College Ave.
- Bible Study—Room 14—*Women's Encounters with Jesus*: Luke 10:38-42
- Catacombs—Rm B-5—DVD—*Waging Peace: Muslim-Christian Alternatives*
- Fine Arts—Rm 24—*From Paul to Constantine* - Bart Ehrman d.v.d.s
- Mosaic—Rm 22—Sermon reflection and response
- Issues & Christianity—Rm 23—*Understanding the New Testament*
- Open Circle—Rm B-7—Sermon reflection and response
- Seekers—Rm 21—TBA
- Sojourners – Chapel—*Your Western District Loan Library*, Marlene Bogard

12:00 noon Soup luncheon served by Senior High youth—fundraiser to attend Mennonite Church USA convention in summer 2015—Fellowship Hall followed at **12:45 p.m.** by the Winter Congregational Meeting—Sanctuary; childcare is available in Room B-4

Monday, January 26

3:00 p.m. BCMC worship DVD—Kidron Bethel Health Care

4:15 p.m. Board Governance Committee

Tuesday, January 27

1:00 p.m. BCMC worship DVD—Kidron Bethel Assisted Living

Wednesday, January 28

8:00 a.m. Staff meeting – Mojo's Coffee Shop, Bethel College campus

6:30 p.m. Cherub Choir (Rm 24), Junior Choir (Rm 28), Sr Hi Youth (Rm 22)

7:30 p.m. Chancel Choir—Sanctuary; Menno Ringers—Rm B-7

8:30 p.m. Chancel Bells—Rm B-7

Thursday, January 29

4:15 p.m. Administrative Team—Room 14

Saturday, January 31

10:00 a.m. Memorial service for Marjorie Stucky—Sanctuary

Sunday, February 1

9:30 a.m. Worship—music by Chancel Bells and Cherub Choir; sermon by John Tyson

10:30 a.m. Fellowship time in the Gathering Place; coffee/water available

10:50 a.m. Christian Education

Wednesday night suppers coming up! Supper will be served at BCMC in the Fellowship Hall on Wednesday nights, Feb. 4 – Mar. 25, sponsored by Hospitality Commission. Chefs Ben Lichti, Marty Warkentine and Brenda Turner will again cook from scratch to prepare delicious food, and Sunday school classes will each be asked to help serve and clean up one of the evenings. The meal time will focus on fellowship and hospitality. Consider inviting a friend or neighbor to be a guest for supper! To help cooks plan for the right amount of food, please make supper reservations by 10 a.m. on the Monday before Wednesday's meal. (Use sign-up form in bulletin, or sign up at supper the week before, or contact church office). Note the adjusted schedule for the supper time this Spring:

- **From 6:00 p.m. to 6:15 p.m.** the meal serving line will be open for you to get your food, be seated and begin eating. There will be one basket at the food line to receive donations for supper. Suggested donation is \$4 or \$5 per person or \$12 per family. (Proceeds above food expenses go to the Kitchen Fund for supplies and future improvements).
- **At 6:20 p.m.** there will be a welcome, announcements and a meal blessing. Then children will be dismissed to attend choir rehearsal.
- **From 6:30 – 7:30 p.m.** there will be open time for eating, conversation and fellowship, and clean-up. (*On February 18 a brief Ash Wednesday service will take place at 7:00 p.m.. in the Sanctuary*)

Other Wednesday night activities during the eight-week season:

- 6:30—7:15 p.m. — Junior Choir and Cherub Choir
- 6:30—7:30 p.m. — Senior High Youth Group
- 7:15—8:00 p.m. — Venture Club and Junior High Club
- 7:30—8:30 p.m. — Chancel Choir
- 7:30—8:00 p.m. — Youth Bells
- 8:30—9:30 p.m. — Chancel Bells

Check your church mailbox next Sunday for a brochure with menus and schedule. See you at supper on Wednesday nights beginning Feb. 4!

Camp Mennoscah announcements:

- Work continues on the new bath houses at Camp Mennoscah with volunteers working on plumbing and electrical. Pictures are on the Camp Mennoscah Facebook page— No account needed www.campmennoscah.org - click on the Facebook link.
- Camp Mennoscah and many other Mennonite camps will be recruiting for summer staff, counselors, and volunteers in February. Camp Mennoscah will be at Goshen College on Feb. 6, and Hesston, Tabor, and Bethel Colleges on February 9, 10, and 11, respectively, from mid-morning to early afternoon.
- Camp Mennoscah Scrapbooking Retreats are coming. A "formal" registration form will be ready soon for the March 6-8 and March 13-15 retreats. Contact Camp Mennoscah at 620-297-3290 or office@campmennoscah.org with questions.



All are invited to the Sr Hi Youth soup luncheon fundraiser at 12 p. m. today! Donations from the luncheon will help students in the Sr Hi Youth attend Snow Camp at Rocky Mountain Mennonite Camp in February and MCUSA Convention in the summer. The approximate cost for a student or sponsor to attend Snow Camp is \$170, while the approximate cost for a student or sponsor to attend MCUSA Convention is \$550. About 15-20 total youth and sponsors plan to attend each event. We estimate that \$9,000 will be needed to fund these trips. The value of today's soup luncheon is \$5.00 per person. The amount of your donation that exceeds \$5.00 is tax deductible. Sr Hi Youth thank you in advance for your attendance, generosity, and support!

Bethel College announcements:

- **Sat., Jan. 31 – Annual Kansas Day celebration at Kauffman Museum,** on the theme of *Transportation with expanded programming: 11 a.m.* - Presentation by Amelia Earhart historical interpreter Ann Birney, *Krehbiel Auditorium* (free). **Noon** - Special Kansas Day luncheon in *Schultz Student Center cafeteria* (ticket purchase required for all but children 4 and under); **1-4 p.m.** - Craft and educational activities, vehicle display in and around the museum (free). To reserve luncheon, e-mail Andi Schmidt Andres at asa@bethelks.edu or call Tues.-Fri. at 316-283-1612.
- **Sat., Feb. 7 – Kauffman Museum First-Saturday Bird Walk;** meet at 8:30 a.m. in the museum parking lot, Main & 27th Streets, North Newton, for a 1 to 1 ½ hour walk on Sand Creek Trail with experienced birder Gregg Friesen; binoculars helpful but not required.



Kansas MCC Relief Sale is April 17-18 at Hutchinson Fairgrounds!

- ***Fellowship Meals** are March 1 and March 8. Be a host and invite someone to your house or be a guest in another family's home. Churches may also host Fellowship Meals which consist of members from the congregation (Sunday school class, Circle Groups, etc.) Forms will be located on a table by the mailboxes. Registration forms due Feb. 13
- ***Quilter's Corner** collection box is located between the mailboxes. A list of suggested items is in the box.
- ***Did you know KMRS has a website and is also on Facebook?** Check it out at www.kansas.mccsale.org, or the KMRS page on Facebook and watch for posting of events and pictures of donated items. Promotional material is being collected **now** for the General or Silent auctions so information can be advertised. Forms are available on bulletin board.
- ***Penny Power begins Feb. 8.** Start saving those coins!
- ***We have already been receiving commitments for purchasing pre-sale items!** Reminder that forms are due Feb. 8. BCMC Relief Sale reps are Dennis & Kathy Campbell, Ron & Carol Peters, and Tom & Gayle Jackson.