

Prayer Requests

Mennonite Church USA: This year, Mennonite Mission Network's Mennonite Voluntary Service program is restructuring to respond to current realities. Pray for Nathan Penner and Neil Richer as they oversee this change, for the 11 congregations and communities that will host larger service households, and for the 10 congregations and communities that will close their MVS units.

Western District Conference: Pray for fruitful ministry for our rural pastors and congregations. Pray for the Rural Ministry Seminar meeting on Saturday, January 24.

This congregation: Pray for the senior high youth group and sponsors, as they prepare to host next Sunday's soup lunch, to raise funds for attending Mennonite Church USA convention in Kansas City this summer.

If you would like to request prayer or a visit, contact the church office or one of the pastors. The Prayer Network and Visitation Team are ministries sponsored by the Deacon Commission.

Bethel College Mennonite Church welcomes into fellowship and membership all persons who confess faith in Jesus Christ, without regard to their race, ethnic background, gender, age, sexual orientation, education, ability, and other factors which give rise to discrimination and marginalization.

Bethel College Mennonite Church, 2600 College Avenue, Box 364
North Newton, KS 67117

Phone: 316-283-3667

Fax: 316-283-2079

Email: office.bcmc@sbcglobal.net

Web site: bethelcollegemennonitechurch.org

Church office hours: 9:00 a.m. – noon on Mon – Fri; 1:00 – 5:00 p.m. on Mon – Thurs.

Building is locked daily at 5 p.m. unless evening activities are scheduled.

Notary public service is available in the church office.

Pastor: Heidi Regier Kreider, heidi.bcmc@sbcglobal.net

Home phone 284-0448, day off is Friday

Associate Pastor for Pastoral Care: Susan Wheeler on sabbatical Jan. 1-Feb.7, 2015;

Harold Thieszen providing pastoral care ministry during sabbatical,

Cell phone: 316-772-8705; hethieszen@gmail.com

Associate Pastor for Faith Formation: John Tyson, john.bcmc@sbcglobal.net

Cell phone 215-896-1047; day off is Monday

Administrative Assistant: Monica Lichti, office.bcmc@sbcglobal.net

Custodian: Michael Crawford, 316-727-9840

Music Coordinator: Rebecca Schloneger, 316-772-6084

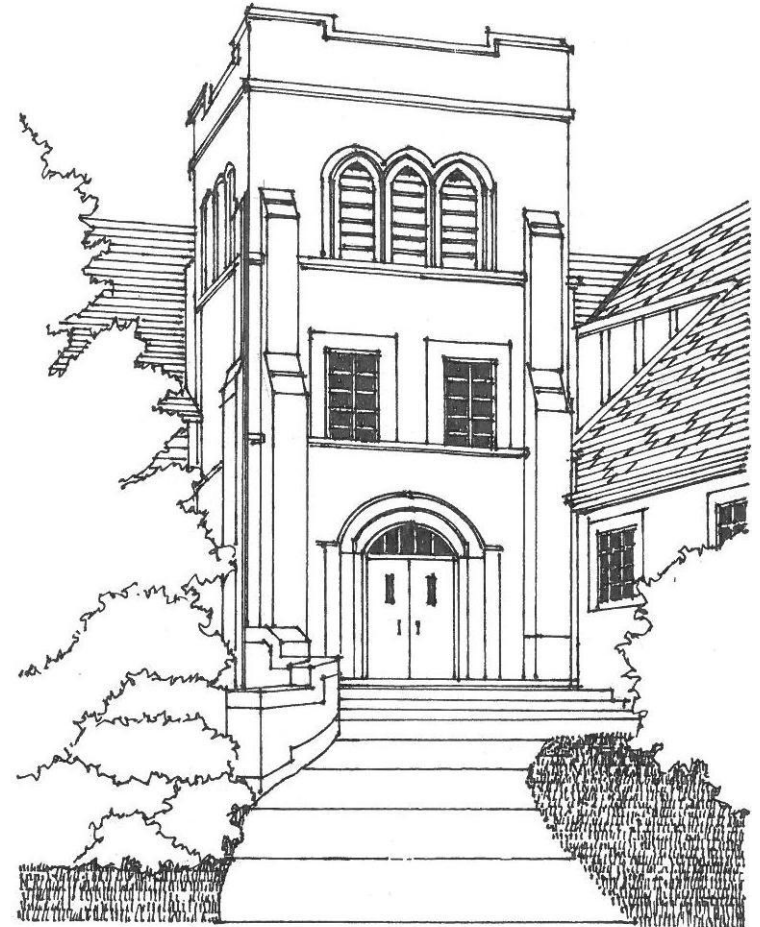
Bell Choir Director: Vada Snider, 283-5231

Chancel Choir Director: William Eash

Cherub Choir director: Jill Siebert

Junior Choir director: Elizabeth Schrag

January 11 at BCMC: Attendance: 239. General Fund \$11,814.91; Living Stones \$2,320; Media Supplies \$40; Faith Formation Commission-Gifts \$50; Inez Koehn Memorial \$100.



Bethel College Mennonite Church
January 18, 2015

Bethel College Mennonite Church
January 18, 2015 – 9:30 a.m. Worship

GATHERING

- Prelude** *Vater Unser im Himmelreich* Bach & Zachau
Verlene Garber, organist
- Greeting** Matt Schloneger, worship leader
- *Hymn** *We are people of God's peace* **HWB 407**
- *Call to worship**
As people of God's peace, let us worship the Lord,
for we have been given mercy and grace.
As children of God's peace, let us praise the name of Jesus,
for we have been given eternal life.
As servants of God's peace, let us receive the Spirit's
blessing,
**for we have been given the privilege of sowing seeds
for the reign of God.**
- *Sung prayer** *O Prince of peace* **HWB 15**
(Children come forward during hymn)

LISTENING FOR GOD'S WORD

- Time with children** Heidi Regier Kreider
- Scripture reading** Matthew 6:7-13
- Hymn** *Ehane he'ama (Father God, you are holy)* **HWB 78**
Matt Schloneger, leader
- Scripture reading** Matthew 6:28-33 **HWB 635**
- Sermon** *What in the world is the kingdom of God?*
Heidi Regier Kreider

RESPONDING IN FAITH

- *Hymn** *You are salt for the earth* **HWB 226**
Suzy Burch, guitar
- Prayer of God's people**
- Offering**
To learn more about BCMC or share a prayer request, please fill
out a card from the pew rack and place in offering plate.
- Offertory**
- *Dedication hymn** *Seek ye first the kingdom of God* **HWB 324**
- *Dedication prayer**

SENDING

- *Hymn** *Jesus shall reign* **HWB 319**
- *Benediction**
Choral response *Hark, I hear the harps eternal* arr. Parker
Chancel Choir; Ron Garber, director
- *Postlude**

HWB = Hymnal: A Worship Book

STS = Sing the Story

Welcome visitors and friends! May you sense God's presence at BCMC. Personal hearing devices are at the north sanctuary entrance. The nursery at rear of sanctuary is available during worship for families with infants and toddlers. Following Time with Children, children receive activity bags to use during worship (return to baskets at the entrance as you leave). We invite members and visitors to fill out welcome/prayer cards in pew racks and place them in the offering plates for response by pastoral staff.

The first two hymns in today's worship were originally published in the 1978 Mennonite World Conference *International Songbook*. The text of *We are people of God's peace* is derived from a passage by early Anabaptist leader Menno Simons declaring that Christ is the Prince of peace and his people are those called "to be such a glorious people of God, a church, kingdom, inheritance, body, and possession of peace." *O Prince of peace* was written by Rev. Saptayaadi, a Javanese Mennonite pastor, in response to an invitation to submit songs indigenous to various countries in preparation for the 1978 MWC gathering. **The Call to Worship** is adapted from *Words for Worship 2*, ed. Diane Zaerr Brenneman, c. 2009 Herald Press, Scottsdale, PA.

Pray for those who received medical care this week: Maxine Fast is receiving care at Schowalter Villa, Hesston. Shirley Harms was released from Kansas Heart Hospital, Wichita.

In the sermon next Sunday, Jan. 25, pastor Heidi Regier Kreider will articulate how she is currently perceiving God's call on her life and ministry, and what implications that might have for BCMC. Staff Congregation Relations Committee requested this, as they prepare to facilitate Heidi's 3-year pastoral review this Spring.

Community Playschool is looking for persons interested and willing to occasionally fill in as a substitute teacher. These volunteers work with a class of 10 or fewer children and another adult in the room. Benefits include warm smiles from the children, an engaging morning where you are allowed to play with blocks and toys and acknowledgment from a very grateful director! If you enjoy working with children and would like to help out in this important mission of your church, please contact Jeanette Leary at 283-3667 for more information.



It's time! A member of BCMC's Mennonite Central Committee Kansas Relief Sale committee will visit Sunday school classes today with a list of items to be purchased for the sale. Anyone else can get in on the pre-sale bidding action too. If you are not involved with a Sunday School class and would like to help purchase an item as an individual, or with several people, contact one of us for more information. A list of items and money needed for purchase is on the bulletin board by the church office. BCMC Relief Sale reps are Dennis & Kathy Campbell, Ron & Carol Peters, and Tom & Gayle Jackson. Thank you BCMC for your continued generosity!

All are invited to a reception faspas, **today**, 5 p.m. at First Mennonite Church, Newton, for Gilberto Flores, Associate Conference Minister for Western District Conference who will retire on Jan. 31, 2015.

Kansas Mennonite Disaster Service Annual State Meeting is **today**, 2 p.m., at Hesston Mennonite Church, 309 S. Main St., Hesston. Contact Jordan Miller, 316-212-3246 or jordan@millerconstruction.org with questions.

It's time for men to register for a new season of singing with the Kansas Mennonite Men's Chorus; an opportunity to combine the love of singing with making a contribution to the mission of the church. Registration forms are available on the bulletin board, or call Omar Voran. "*We sing that others might live.*"

Mennonite Church USA convention and delegate assembly will be June 30-July 5, 2015 in Kansas City. Registration opens Jan. 5. For info see www.MennoniteUSA.org/convention. The BCMC Gifts Discernment Committee is in the process of appointing delegates to represent our congregation at the delegate assembly.

Dillon's Plus Card registration to help support Offender/Victim

Ministries: In order for OVM to receive 5% of your purchases at Dillons, you will need to register your plus card number. To learn more about this process, see Judy Kliever under the balcony at the back of the church after worship this morning. We value your support and the effort you make to benefit the work of Offender Victim Ministries in the community.

Prairie View invites those experiencing loss and grief to a labyrinth experience and worship, Thurs, Jan. 22 in the Prairie View Chapel, 1901 E. First St., Newton. *Winter Solace: Seeking Our Source of Light* begins at 6 p.m. with an indoor labyrinth experience for participants to use the centuries-old meditation and prayer tool to walk their prayers to God. At 7 p.m. is a worship service of remembrance and hope, to minister to those with feelings of loss, grief, sadness or loneliness as well as those seeking rest and renewal. Park in north lot, enter at the east walk-in entrance. Admission free and open to the public. For info call 316-284-6400 or 800-992-6292.

This Week at BCMC: January 18 – January 25, 2015

Today

10:30 a.m. Fellowship time in the Gathering Place; coffee/water available

10:50 a.m. Christian Education – Visitors welcome!

- 2-3 year olds through 4th grade—meet in Fellowship Hall for snack, then Room B-8 for singing before going to classrooms (2-3 year olds in B-6; Pre-K —1st grade in B-4; 2nd-4th grade stay in B-8)
- Grades 5-8 —Rm 26 • Senior High Youth- Rm 22

Adult classes:

- Agape — KIPCOR at 2515 College Ave.
- Bible Study — Room 14—*Women's Encounters with Jesus*: Mark 5:21-43
- Catacombs —Rm B-5—*Back Again in Newton*, David and Rose Haury
- Fine Arts — Rm 24—*From Paul to Constantine* - Bart Ehrman d.v.d.s
- Mosaic — Rm 22—Sermon reflection and response
- Issues & Christianity — Rm 23—*Understanding the New Testament*
- Open Circle —Rm B-7—Sermon reflection and response
- Seekers—Rm 21—TBA
- Sojourners – Chapel—*The Allure of Birds*, Robert Regier & Harvey Hiebert

4:00 p.m. Bethesda Home, Goessel—Devotional service with Pastor Harold Thieszen and LaVera Schrag accompanying on the piano

Monday, January 19—Martin Luther King Jr. Day—Office will be closed

3:00 p.m. BCMC worship DVD—Kidron Bethel Health Care

7:00 p.m. Worship Commission – Rm 14

Tuesday, January 20—Women's Fellowship Circle Meetings

1:00 p.m. BCMC worship DVD—Kidron Bethel Assisted Living

2:00 p.m. Circle 1—Community Room at Kidron Bethel
Circle 2—Loretta Baumgartner's, 175 W. Hickory, Apt. #D-4, Hesston

Circle 5—Mildred Voran's, 2913 Wildwood Way, North Newton

5:15 p.m. Hospitality Commission—Rm 14

7:00 p.m. Circle 3—Aldine Sprunger's, 2412 College Ave., North Newton
Circle 4—Louise Thieszen's, 2903 Bluestem Court, North Newton
Faith Formation Commission—Rm B-8
Facilities Committee—Fellowship Hall

Wednesday, January 21

8:00 a.m. Staff meeting – Room 14

6:30 p.m. Cherub Choir (Rm 24), Junior Choir (Rm 28), Sr Hi Youth (Rm 22)

7:30 p.m. Chancel Choir—Sanctuary; Menno Ringers—Rm B-7

8:30 p.m. Chancel Bells—Rm B-7

Thursday, January 22

6:00 p.m. Sojourner's Sunday School class gathering—Fellowship Hall

7:00 p.m. Witness Commission—Rm 14

Friday, January 23

8:00 a.m. Mennonite Men—Kidron Bethel Harvest Table for coffee and rolls. Minimum cost is \$2.50 per person. Afterwards, in Menno Hall, S. Roy Kaufman will discuss land and climate. He will provide copies of his recent publication, *Healing God's Earth* for purchase.

6:00 p.m. Catacombs Sunday school glass gathering—Fellowship Hall

Sunday, January 25

9:30 a.m. Worship—music by Chancel Choir; sermon by Heidi Regier Kreider

10:30 a.m. Fellowship time in the Gathering Place; coffee/water available

10:50 a.m. Christian Education

12:00 noon Soup luncheon served by Senior High youth—fundraiser to attend Mennonite Church USA convention in summer 2015—Fellowship Hall followed at **12:45 p.m.** by the Winter Congregational Meeting—Sanctuary



Today's worship observes World Fellowship Sunday, a celebration of the global Anabaptist family of faith, sponsored by Mennonite World Conference on a Sunday close to January 21. On that date in 1525 the first Anabaptist baptism took place in Switzerland. World Fellowship Sunday provides an opportunity to remember our common roots and celebrate our worldwide faith community. Each year worship themes come from a different region of MWC. This year's resources were prepared by Iris de Leon-Hartshorn of the U.S. and Ron Penner of Canada, North American members of MWC's Executive Committee. The regional focus in 2015 is on the Anabaptist churches in North America. There are nine member churches in North America: Brethren in Christ, Mennonite Brethren and Mennonite Church in both Canada and the U.S.; Evangelical Mennonite Mission Conference and Evangelical Mennonite Conference in Canada; and Conservative Mennonite Conference in the U.S. – altogether about 223,000 baptized members. There are approximately another 300,000 Anabaptists in North America who are not members of MWC, including the Amish, Old Order Mennonites, Old Colony Mennonites, Plain Mennonites, Hutterites, and Bruderhof.

How can you participate in MWC?

- Pray for the churches and leaders of MWC
- Send financial contributions to Mennonite World Conference, PO Box 5364, Lancaster, PA 17606-5364
- Plan to attend Pennsylvania (PA) 2015, the 16th Assembly of MWC, July 21-26 in Harrisburg, PA. Worship and fellowship with thousands of Anabaptist Christians in an international gathering, be inspired by the music of Zimbabwean and Kenyan choirs, learn about the global church by visiting the Global Church Village, play or watch the Anabaptist World Cup soccer tournament, get to know others through Friendship Groups, take part in a service opportunity. See all that PA 2015 has to offer at <https://www.mwc-cmm.org/pennsylvania-2015>.

The BCMC winter congregational meeting is next Sunday at 12:45 p.m. in the Sanctuary, following a soup luncheon served by Senior High youth as a fundraiser to attend Mennonite Church USA convention in summer 2015. A report booklet is in church mailboxes today listing meeting agenda, 2014 financial reports, and the proposed 2015 budget. Agenda includes presentation of 2015 budget, action on a tabled motion from the September congregational meeting, announcements from the Facilities Committee and Art Committee, and from delegates to Western District Conference concerning the resolution from Rainbow Mennonite Church, a proposal from the Witness Commission, and recognition of one of our members for outstanding service. All are encouraged to attend the lunch and meeting! Child-care will be provided during the meeting. Also, thanks to all in the congregation for another excellent financial year. Contributions to the 2014 annual fund were \$468,378. This was only \$461 short of the \$468,839 in expenses. In addition, contributions to Living Stones allowed us to reduce the balance of our external loan from \$188,619 to \$107,137. We also have borrowed \$115,276 internally from our own special funds, resulting in a total of \$222,413 that still needs to be raised over the next year. – *Jim Robb, moderator / Richard Friesen, treasurer*

Bethel College announcements:

• **Jan. 18-19 – Bethel College's annual celebration of the life and legacy of Martin Luther King, Jr.** Today, Jan. 18, 3 p.m.: excerpts from the documentary *Freedom Riders*, Krehbiel Auditorium; discussion follows with Dr. Gretchen Eick of Friends University and Dr. Galyn Vesey. Mon., Jan. 19, 7 p.m.: Program with members of Bethel's Multicultural Student Union and keynote speaker Sarah Thompson, executive director of Christian Peacemaker Teams in Krehbiel Auditorium.

Sat., Jan. 24, 3-5:30 p.m., Agape Center in the Richert House – *An Introduction to Centering Prayer*. Leader is Laurinda Wade, Wichita, spiritual director and Centering Prayer retreat leader. Centering Prayer is drawn from an ancient form of Christian prayer that involves silence and contemplation. The workshop is free but organizers request an RSVP to Nathan Koontz, 2nathankoontz@gmail.com; Melanie Zuercher, mzuercher@bethelks.edu; or Karen Andres, davidkaren@powwwer.net.

• **Sat., Jan. 31 – Annual Kansas Day celebration at Kauffman Museum,** on the theme of Transportation with expanded programming: 11 a.m. - Presentation by Amelia Earhart historical interpreter Ann Birney, *Krehbiel Auditorium* (free). **Noon** - Special Kansas Day luncheon in *Schultz Student Center cafeteria* (ticket purchase required for all but children 4 and under); **1-4 p.m.** - Craft and educational activities, vehicle display in and around the museum (free). To reserve luncheon, e-mail Andi Schmidt Andres at asa@bethelks.edu or call Tues.-Fri. at 316-283-1612.