

Prayer Requests

Mennonite Church USA: Pray for comfort and hope for Mark and Mary Hurst of Mennonite Mission Network who are grieving many recent losses, including the death of Mark's father, and the death of a colleague in the Anabaptist Association of Australia and New Zealand.

Western District Conference: Pray for the Houston Mennonite Church as they develop plans to build new facilities.

This congregation: Give thanks for generous financial contributions from members and friends in 2013, and pray for God's guidance for us to practice faithful stewardship in 2014. (Financial reports and proposed budget are in church boxes today, in preparation for the congregational meeting Jan. 26.)

If you would like to request prayer or a visit, contact the church office or one of the pastors. The Prayer Network and Visitation Team are ministries sponsored by the Deacon Commission.

Bethel College Mennonite Church welcomes into fellowship and membership all persons who confess faith in Jesus Christ, without regard to their race, ethnic background, gender, age, sexual orientation, education, ability, and other factors which give rise to discrimination and marginalization.

Church office hours: 9:00 a.m. – noon on Mon – Fri; 1:00 –5:00 p.m. on Mon – Thurs.

Building is locked daily at 5 p.m. unless evening activities are scheduled.

Notary public service is available in the church office.

Phone: 316-283-3667

Fax: 316-283-2079

Email: office.bcmc@sbcglobal.net

Web site: bethelcollegemennonitechurch.org

Pastor: Heidi Regier Kreider, heidi.bcmc@sbcglobal.net

Home phone 284-0448, day off is Friday

Interim Associate Pastor for Faith Formation: Weldon Martens, weldon.bcmc@sbcglobal.net; cell phone 402-202-9276, day off is Friday

Associate Pastor for Pastoral Care: Susan Wheeler, susanmwheeler@gmail.com

Home phone 620-327-2295, cell phone 316-706-0887; day off is Monday

Administrative Assistant: Monica Lichti, office.bcmc@sbcglobal.net

Custodian: Michael Crawford, 316-727-9840

Music Coordinator: Rebecca Schloneger, 316-772-6084

Organist: Eleanor Kaufman, 283-7421;

Interim Chancel Choir Director: Doyle Preheim

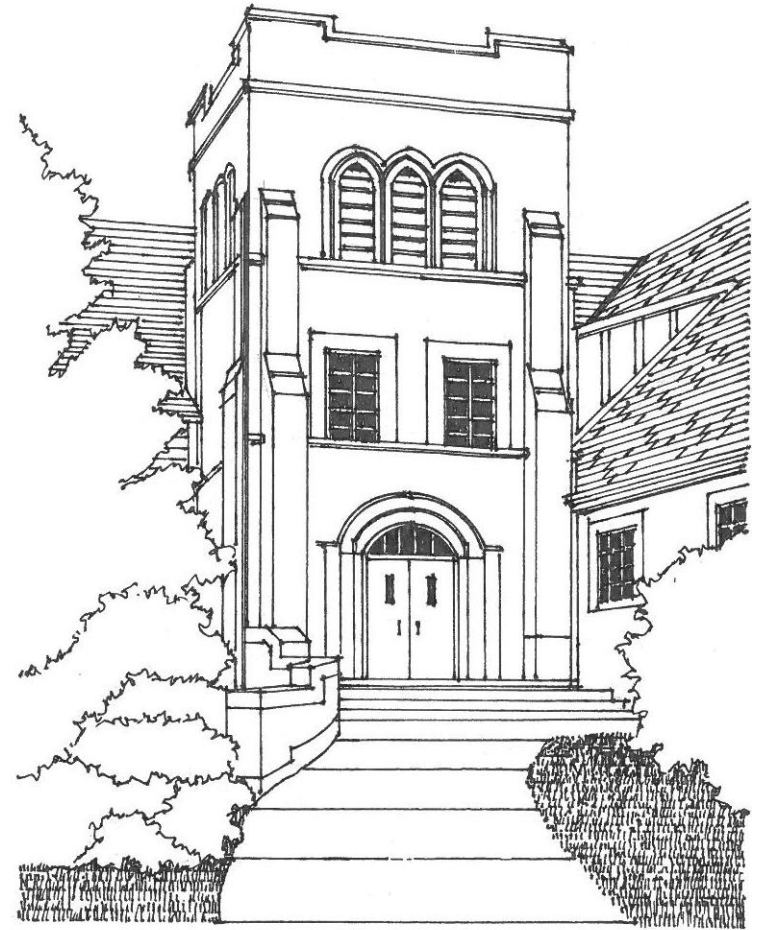
Bell Choir Director: Vada Snider, 283-5231

Junior Choir Director: Renee Reimer, 605-212-0081

Cherub Choir Director: Megan Siebert, 785-580-9634

Bethel College Caring Ministries Intern: Joe Kondziola, josephkon@bethelks.edu

Winter weather watch! In the event of extreme cold, snow or ice, please use caution when coming to and from the church. To check for church closing or canceled services, see the BCMC website at <http://www.bethelcollegemennonitechurch.org>. Information about church closings will also be listed on local radio and TV stations if possible.



January 19, 2014
Bethel College Mennonite Church

Bethel College Mennonite Church

2600 College Avenue, Box 364, North Newton, KS 67117 316-283-3667

Pastors: Heidi Regier Kreider, Susan Wheeler, Weldon Martens

January 19, 2014

Worship 9:30 a.m.

TIME FOR WORSHIP

Discerning God's gifts for ministry

GATHERING

Prelude *When morning gilds the skies* arr. Reimer
I will enter His Gates arr. LeDoux

Verlene Garber, pianist

Greeting and prayer Dianne Epp, worship leader

***Hymn** *Here in this place* **HWB 6**

Patty Shelly, guitarist

(children come forward during hymn)

LISTENING FOR GOD'S WORD

Time with children Heidi Regier Kreider and Frank Stucky

Worship music *Canticle of the turning* (STS 124) arr. Thompson

Chancel Bells; Vada Snider, director; Bethany Schrag, vocalist

Sermon Heidi Regier Kreider and Dorothy Nickel Friesen

Part 1

Scripture and commentary – Stories of God's call

Hymn *There are many gifts* (v. 1) **HWB 304**

Part 2 – Receiving God's gifts

Scripture - 1 Corinthians 12:14-20

Commentary

Scripture – Ephesians 4:7, 11-13, 15-16

Hymn *There are many gifts* (v. 2) **HWB 304**

Part 3

Scripture reading: 1 Corinthians 12:4-13 **HWB 851**

Scripture response: For the Word of God in scripture, for the Word of God within us, for the Word of God among us - **Thanks be to God!**

Commentary

Hymn *There are many gifts* (v. 3) **HWB 304**

RESPONDING IN FAITH

Prayer of God's people

Kingdom Report

Harold Thieszen,

Organ Renovation Task Force chair

Offering

To learn more about BCMC or share a prayer request, please fill out a card from the pew rack and place in offering plate.

Offertory

Aria

Wilhelm Bach

***Dedication hymn** *Grant us, Lord, the grace* **HWB 388**

***Dedication prayer**

SENDING

***Hymn** *Filled with the Spirit's power* **HWB 289**

***Benediction**

***Benediction response**

***Postlude**

*All who are able are invited to stand

HWB = Hymnal: A Worship Book

STS = Sing the Story

The Scripture Response is reprinted with permission from *The Iona Abbey Worship Book*, c. 2001 by The Iona Community.

In church boxes today are copies of the 2014 Gifts Discernment Survey. Please complete and return the survey by Feb. 3, 2014 Survey can be filled out on-line (via the BCMC website), see the printed survey for instructions.

Welcome visitors and friends! May you sense God's presence at BCMC. Personal hearing devices are at the north sanctuary entrance. The new nursery at rear of sanctuary is available during worship for families with infants and toddlers. Following Time with Children, children receive activity bags to use during worship (return to baskets at the entrance as you leave). We invite members and visitors to fill out welcome/prayer cards located in pew racks and place them in the offering plates for response by pastoral staff.

Senior High Youth Group Announcements:

- Wednesday, Jan. 22, 7 p.m. **Youth...** Segregate in subterranean space to set up Sunday's scrumptious supply of sausage and non-sausage splashy sustenance. Translation - Youth meet in kitchen to prepare for Sunday's soup luncheon.
- Saturday, Jan. 25, 1:30 p.m. – **Information Meeting for Parents and Youth** regarding DOOR trip to Denver and youth activities for the Spring. Following the meeting we will finish preparations for Sunday's soup luncheon. See you in the Fellowship Hall.
- **Next Sunday, Jan. 26** - The senior high youth group invites everyone to a **soup luncheon at noon**, with proceeds going to support their trip this summer to DOOR (Discovering Opportunities for Outreach and Reflection) in Denver.



All church clean up day January 25, 8:30 a.m. to finish. Everyone is invited to come help remove construction dust! Bring your own dusting and cleaning supplies (rags, polish, etc.).

~ Facilities Committee

This Week at BCMC: January 19 - 26, 2014

Bethel College's annual celebration of the life and legacy of Martin Luther King, Jr., begins with a screening of the 77-minute documentary, *The Loving Story*, the story of Mildred and Richard Loving, whose case against the Virginia anti-miscegenation law led to the 1967 Supreme Court ruling that supported the freedom to marry, **Jan. 19 (today)**. A discussion follows with Dr. Ada Schmidt-Tieszen, Bethel College professor of social work. Event is in Krehbiel Auditorium. **Mon., Jan. 20, 7 p.m.**, there is a keynote address by Ewudare Osayande, Anti-Oppression ministry coordinator for Mennonite Central Committee U.S., Krehbiel Auditorium.

Celebrate Kansas Day! at Kauffman Museum, Sat., Jan. 25, 1:30-4:30 p.m., with the theme "The Arts in Kansas;" special performances by NUTS (Newton Ukulele Tunes Society) and BCAPA's Kaleidoscope Dance Company, presentation/book-signing with illustrator Brad Sneed, indoor and outdoor crafts, activities, demonstrations and displays of artwork by Hanna Eastin, John Gaeddert and Joseph Loganbill.

Bethel College Concert Choir end-of-European-tour home concert, Sun., Jan. 26, 7 p.m., Memorial Hall.

Retired Bethel College art faculty members Bob Regier and Paul Friesen have an exhibit of pastels and wood sculpture in the Birger Sandzén Gallery in Lindsborg, Jan. 14-Feb. 23, with artist reception today, Jan. 19, 2-4 p.m. For more information, see www.sandzen.org.

Kansas Mennonite Disaster Service invites all to their annual meeting and program today, 2 p.m. at First Mennonite Church, 429 E. 1st, Newton. The program will feature the Partnership Home Project. Learn how your church could get involved. Refreshments will follow the program.

It's time for men to register for a new season of singing with the Kansas Mennonite Men's Chorus. All money received from offerings at KMMC concerts go to Mennonite Central Committee. Registration forms are available on the bulletin board.

The Anabaptist Vision and Discipleship Series (AVDS) is Feb. 21-23 at Hesston College as part of MCUSA Year of the Bible. "*Reading the Bible in an Instagram World*" is a refreshed version of Hesston's well-known Biblical Literature course, including Heilsgeschichte or Salvation History. Faculty members Michele Hershberger and Marion Bontrager will present, along with nationally recognized artists Ted Swartz and Jeremy Kempf who bring the scriptures alive through drama/music. Go to www.hesston.edu/avds for more information. Western District has a \$30 rebate available for 30 WDC participants. Contact Nancy Funk at wdc@mennowdc.org to sign up for the post-event issued rebate.

Agri-Urban invites all of its supporters and interested people to an appreciation dinner Feb. 1, 6 p.m. in the Eden Mennonite Church Fellowship Hall, 4 miles west and 2 miles north of Moundridge. No reservations necessary.

Today

10:30 a.m. Fellowship time with coffee served in newly renovated foyer area

10:50 a.m. Christian Education for all ages – Visitors welcome!

Children and youth Sunday school classes:

- 2-3 year olds—Rm B-6; pre-K through 4th grade students—following snacks in Fellowship Hall, meet in Room B-8 for singing and story
- 5th, 6th, 7th, and 8th grade students—Rm 26
- Sr Hi Youth—Rm 22

Adult Sunday school classes:

- Agape (Young Adults)—KIPCOR, 2515 College Ave.
- College students—Agape Center in Richert House, 2611 College Ave.
- *The Bible in 90 Days*—Fellowship Hall
- Catacombs—Rm B-5—*Energy Generation Project*, Margaret Toews
- Fine Arts—Rm 24—*Understanding the New Testament* video series
- Issues & Christianity—Rm 23—Discussion of issues and events
- Open Circle—Rm B-7—Sermon reflection and response
- Seekers—Rm 21
- Sojourners—Little Chapel—*The Power of Prayer* with Marvin Dirks

Mon., January 20—Martin Luther King Jr. Day—Office closed; building open for organ unloading.

3:00 p.m. BCMC worship DVD—Kidron Bethel Health Care

Tuesday, January 21—Women's Fellowship Circle Meetings

1:00 p.m. BCMC worship DVD—Kidron Bethel Assisted Living

2:00 p.m. Circle 1—Community Room at Kidron Bethel

Circle 2—Louise Thieszen's, 2903 Bluestem Ct., North Newton

Circle 5—Milly Stucky's, 42 Regal Crescent, North Newton

7:00 p.m. Circle 3—BCMC Fellowship Hall

Circle 4—Karen Penner's, 928 Spruce, Newton (Note change of location)

7:00 p.m. Facilities Committee—FH; Hospitality Commission—Rm 14

Wednesday, January 22

8:00 a.m. Staff meeting – Rm 14

6:30 p.m. Cherub Choir (Rm 24) and Junior Choir (Rm 28)

7:00 p.m. Senior High youth—Rm 22 **7:15 p.m.** Menno Ringers—Rm B-7

7:30 p.m. Chancel Choir—Sanctuary **8:30 p.m.** Chancel Bells—Rm B-7

Saturday, January 25

1:30 p.m. Senior High Youth and their parents meeting—Kitchen

Sunday, January 26

9:30 a.m. Worship - Sermon by Heidi Regier Kreider, music by Chancel Choir, and litany of dedication for the recently finished renovations in our facility.

10:30 a.m. Fellowship time with refreshments in renovated gathering area

10:50 a.m. Christian Education for all ages

calendar continued on next page

Sunday, January 26 calendar continued

11:45 a.m. Soup luncheon sponsored by Youth Group—Fellowship Hall

1:00 p.m. Congregational Meeting—Sanctuary

3:30 p.m. Worship at Kidron Bethel Menno Hall with Pastor Heidi Regier Kreider

Coming up next Sunday, Jan. 26 - BCMC's newly renovated space will be dedicated in a litany at the close of worship, and the youth will serve a soup-luncheon at noon as a fund-raiser for their service trip to Denver this summer for DOOR (Discovering Opportunities for Outreach and Reflection). Representatives from PBA Architects, Regier Construction Company, and contractors who worked on the renovations have been invited to be our guests for lunch, and to be recognized at the beginning of the congregational meeting that follows at 1:00 p.m. Meeting agenda will include a 2013 financial report, approval of 2014 budget, Living Stones update, report on the Associate Pastor search process, and action on recommendations regarding Mennonite higher education and service scholarships and the Mission and Service Endowment Fund policy. The agenda and financial report booklet are in church boxes today.

Living Stones Update: The pipe organ will arrive at the church today, Jan. 19. Unloading and moving organ components into the church will begin on Mon., Jan. 20, 8 a.m. We thank each person who is volunteering to participate in the unloading and reinstallation of the organ. The tonal finishing is scheduled to be completed by March 7. For more information contact the Organ Renovation Task Force: Harold D. Thieszen, contact person and chair, Eleanor Kaufman and Chris Shaw, recording secretary.

Come to the library to pick up a list of the new books recently added and available for check-out. **An updated** list of new books is available in the library. Last week's list was missing a page. ~ *Library Committee*

Are you interested in learning more about BCMC, or becoming a member of the congregation? An orientation class will be offered on Sunday afternoons in February, beginning on Feb. 2 at 2:00-4:00 p.m. in Room 14. To participate, contact Heidi Regier Kreider at heidi.bcmc@sbcglobal.net. or 283-3667.



Kansas MCC Relief Sale is April 11-12 at Hutchinson Fair Grounds!

***Fellowship Meals are Feb. 23 & Mar. 2.** Be a host and invite someone to your house to "come and dine" or be a guest in another family's home. Churches are also encouraged to host Fellowship Meals which consist of members from the congregation (Sunday school class, Circle Groups, etc.) Brochures were in your mailboxes last Sunday. If you need more brochures; contact a KMRS committee member. Registration forms are due Feb. 2.

***Quilter's Corner** collection box is located between the mailboxes. A list of suggested items is in the box.

***Pickles, chips, sausage or cheese?** Information on items/ingredients you can pre-purchase for the Relief Sale was given to each SS contact person last Sunday. Thank you in advance for your generosity! **Please return forms to a committee member or Karen & Larry Penner by Feb. 2.**

***Penny Power begins Feb. 16.** Start saving those coins!

***HOW WILL YOU SUPPORT THE SALE THIS YEAR? PLAN NOW!!** Questions? Contact committee reps Jim & Beaty Robb, Dennis & Kathy Campbell and Ron & Carol Peters.

The BC Relations Team thanks all those who helped with the Pancake Extravaganza for Bethel College students last Saturday morning. Many brought toppings and others helped in the kitchen with preparation and cleanup. About 125 students attended. A special thanks to Ralph and Evelyn Lehman who donated a gallon of their maple syrup. ~ *BC Relations Team*

Witness Commission is sponsoring a letter-writing campaign to repeal the death penalty in Kansas. There is sponsored legislation in both the House and the Senate that makes repealing the death penalty a hopeful possibility this year. Sending letters to your legislative representatives is an important part of this effort. Someone from the Witness Commission will be at the back of the sanctuary today and next Sunday to assist you with helpful information, addresses, sample letters, along with stationery, envelopes, and pens.

A Year of the Bible opportunity: John D. Roth, professor of history at Goshen College, will speak at First Mennonite Church, Newton, Feb. 1 and 2. On Sat., Feb. 1, 10 a.m., there will be teaching and discussion of *Testing the Spirits: Why the Reformation debate over the Bible still matters today*. Brunch will be provided. For Sunday worship at 10:30 a.m., Roth will preach a sermon entitled, *By Whose Authority? Witnessing to the Living Word in a Skeptical World*. (If you plan to attend brunch, please RSVP to the church office at 283-0273.)