

Prayer Requests

Mennonite Church USA: Barbara and Tad Wulliman of Mennonite Mission Network, who live in Manila, request prayer for the people of the Philippines. Many were still living in tents after an earthquake devastated their homes in October, when super-typhoon Haiyan pounded the islands. Pray that Christians will find tangible ways to share Jesus' love.

Western District Conference: This week, area Conference Ministers meet in Denver, Colorado. Pray that this time of networking, listening and planning may be encouraging and life-giving to our leaders. Clarence Rempel, WDC Executive Conference Minister and Gilberto Flores, Associate Conference Minister will be in attendance.

This congregation: Give thanks for musicians who grace our worship with the music of Advent and Christmas; pray for their health, strength and joy in this busy season.

If you would like to request prayer or a visit, contact the church office or one of the pastors. The Prayer Network and Visitation Team are ministries sponsored by the Deacon Commission.

Bethel College Mennonite Church welcomes into fellowship and membership all persons who confess faith in Jesus Christ, without regard to their race, ethnic background, gender, age, sexual orientation, education, ability, and other factors which give rise to discrimination and marginalization.

Church office hours: 9:00 a.m. – noon on Mon – Fri; 1:00 –5:00 p.m. on Mon – Thurs. Building is locked daily at 5 p.m. unless evening activities are scheduled.

Notary public service is available in the church office.

Phone: 316-283-3667

Fax: 316-283-2079

Email: office.bcmc@sbcglobal.net

Web site: bethelcollegemennonitechurch.org

Pastor: Heidi Regier Kreider, heidi.bcmc@sbcglobal.net

Home phone 284-0448, day off is Friday

Interim Associate Pastor for Faith Formation: Weldon Martens,

weldon.bcmc@sbcglobal.net; cell phone 402-202-9276 , day off is Friday

Associate Pastor for Pastoral Care: Susan Wheeler, susanmwheeler@gmail.com

Home phone 620-327-2295, cell phone 316-706-0887; day off is Monday

Administrative Assistant: Monica Lichti, office.bcmc@sbcglobal.net

Custodian: Michael Crawford, 316-727-9840

Music Coordinator: Rebecca Schloneger, 316-772-6084

Organist: Eleanor Kaufman, 283-7421

Bell Choir Director: Vada Snider, 283-5231

Chancel Choir Director: William Eash, 284-0920

Junior Choir Director: Renee Reimer, 605-212-0081

Cherub Choir Director: Megan Siebert, 785-580-9634

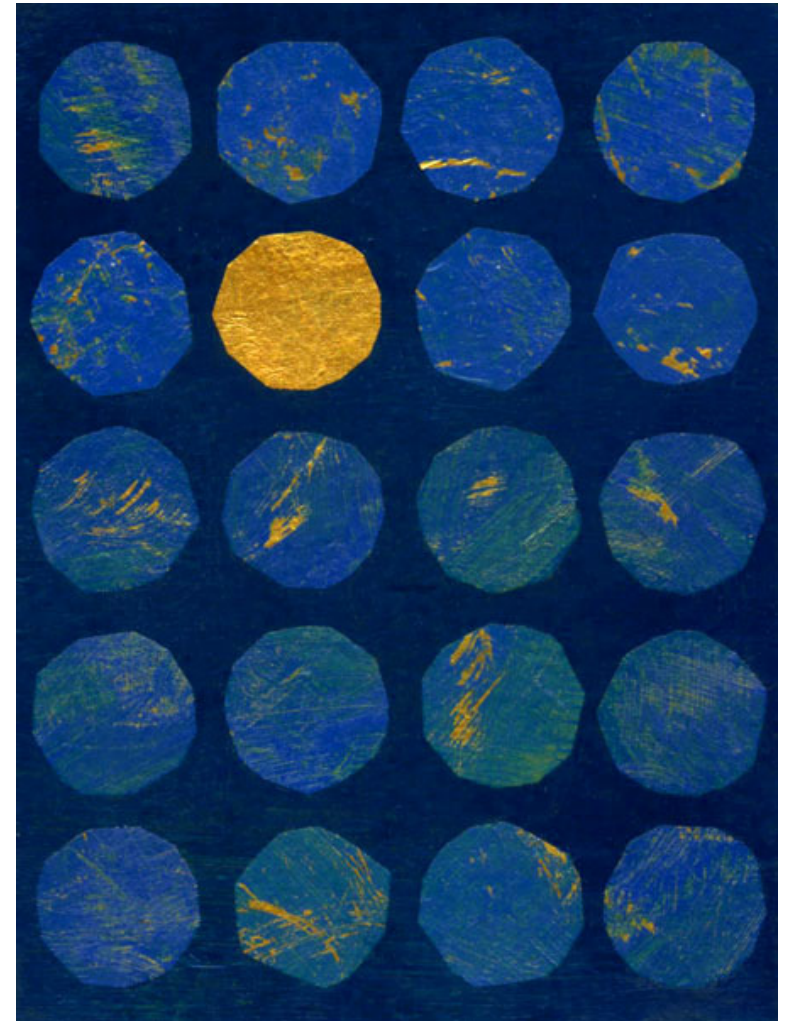
Bethel College Caring Ministries Intern: Nicole Smith, 574-612-0078

The lights in the sanctuary windows witness to our hope and prayers for peace. We encourage others to place a light in a window as a reminder to pray for peace.

~ Witness Commission.

Advent 2013

The mystery of God's dwelling!



December 1, 2013

Bethel College Mennonite Church

Cover image: *Where Advent Begins* © Jan L. Richardson

Used by permission from the website janrichardson.com

Bethel College Mennonite Church

2600 College Avenue, Box 364, North Newton, KS 67117 316-283-3667

Pastors: Heidi Regier Kreider, Susan Wheeler, Weldon Martens

December 1, 2013 Prelude 9:00 a.m., Worship 9:30 a.m.

FIRST SUNDAY OF ADVENT

The mystery of God's dwelling...in hope

INVITING THE MYSTERY

9:00 a.m. Prelude Suzy Burch and Ben Lichti, handbell duo
Howard Glanton, guitar
Snow lay on the ground arr. Dobrinski
A calypso Christmas arr. McChesney
Chancel Bells; Vada Snider, director
Greeting Susan Wheeler

Call to worship

Leader: Come, let us walk in the light of the Lord!

People: **Let us learn God's ways.**

Leader: Let us awake to hope:

People: **The salvation of our God is near.**

All: *O, the mystery of God's dwelling in our present!*

*Hymn *Come, though long-expected Jesus* **HWB 178**
Eleanor Kaufman, pianist

ENGAGING THE MYSTERY

Confession and lighting the Advent candle

Gwen Neufeld, Kurt Friesen, Elisabeth and Katherine

Leader: As we look with hope to the coming of Christ, we pause to remember that God came into our darkness with marvelous light. Let us also expose the weapons of our sinful pride, releasing them to God to re-fashion into tools that sustain us. The first Advent candle is the candle of hope.

All: In this light we receive forgiveness, knowing that God dwells with us in hope.

Hymn *Hope is a candle* (stanza 1) **STS 15**
(children come forward during hymn)

Time with children Carol Flickinger

Old Testament reading Isaiah 2:1-5

New Testament readings Romans 13:11-14, Matthew 24:36-44

Sermon *Joining in God's salvation* Heidi Regier Kreider

CELEBRATING THE MYSTERY

Service of Communion

Prayers of intercession and thanksgiving

Words of institution

Sharing the Bread and Cup – You may dip the bread in the cup, and eat as the tray is passed to you (bread is gluten-free).

Communion hymn: *Let all mortal flesh keep silence* **HWB 463**

Prayer after Communion

Offering *In the bleak midwinter* Holst; arr. Stevens

To learn more about BCMC or share a prayer request, please fill out a card from the pew rack and place in offering plate.

Offertory *Infant holy, Infant lowly* arr. Dobrinski
Chancel Bells; Rebecca Schloneger, violin

*Dedication hymn *Gloria, gloria* **HWB 204**

*Dedication prayer

LIVING THE MYSTERY

*Closing hymn *Oh, how shall I receive thee* **HWB 182**

*Benediction

*Benediction response

*Postlude

*All who are able are invited to stand

HWB = Hymnal: A Worship Book

STS = Sing the Story

Welcome visitors and friends! May you sense God's presence at BCMC. Personal hearing devices are at the north sanctuary entrance. The Nursery (Rm 20 behind balcony) is available during worship for families with infants and toddlers. Following Time with Children, children receive activity bags to use during worship (return to baskets at the entrance as you leave). We invite members and visitors to fill out welcome/prayer cards located in pew racks and place them in the offering plates for response by pastoral staff.

Today is the first Sunday of Advent! The Call to Worship and Confession at the lighting of Advent candles is from Mennonite Church USA worship resources on the theme "*O, the mystery of God's dwelling.*" We ponder with awe the coming of Jesus Christ, the Word made Flesh who dwells among us. As we move through the Sundays of this season, we await his return in the fullness of time, we recall how John the Baptist announced his ministry, and we prepare to celebrate his birth and revelation to all the world!

Life Enrichment Wednesday, Dec. 4, at Krehbiel Auditorium:

9:30 a.m. *Salvation Army and Harvest of Love*, Barbara Lee

10:15 a.m. *Coffee break with goodies*

11:00 a.m. *Hesston High School Singers*, Jessica Harrison

Holiday events:

• Sing along to Christmas portions of Handel's *Messiah*, Wed., Dec. 4, 11 a.m., *Bethel College Mennonite Church*, with Bethel College soloists, conductors and instrumentalists; scores provided, and all are welcome

• Christmas Gala Jazz Concert with Bethel College Jazz Ensembles I and II, Fri., Dec. 6, 8 p.m., *Krehbiel Auditorium*

• Lighting of the Green at Bethel College, Sun., Dec. 8, 8 p.m. on the Green; refreshments follow in the cafeteria

• You are invited to join First Mennonite Church, Newton, chancel choir to perform Handel's *Messiah* Sun., Dec. 15, 7 p.m. Rehearse Sundays, 2:30-4 p.m. in sanctuary. Dress rehearsal Sat., Dec. 14, 3-5 p.m. Bring *Messiah* book, or purchase at rehearsals.

• Newton Treble Clef Christmas Vespers - Sun., Dec. 1, 3 p.m., Shalom Mennonite Church, 300 E. 1st St. Music by Vada Snider, flutist; Karen Loucks, pianist; Treble Clef chorus, harpist Hilary Wolfe, Hearts 4 Him; Nancy Johnson, violinist, and Joan Wulf, pianist. Freewill offering.

• Winter Luminary Walk with music and dance, Dyck Arboretum in Hesston, 5:30-8:00 p.m. Dec. 6 and 7. Admission \$5 adults, \$3 students, \$2 children ages 3-15.

• The Wichita Chamber Chorale annual Christmas program is part of the Hesston-Bethel Performing Arts series, 7:30 p.m., Thurs., Dec. 5, at Hesston Mennonite Church. The concert will also feature the Wichita Brass Quintet. Tickets can be purchased at hesstonbethel.org or by calling 620-327-8158.

• Nativities Past and Present, Sat., Dec. 7 (part of Five Places of Christmas), sponsored by the Bethel College Women's Association, 9 a.m.-3 p.m., *Fine Arts Center*

• Benefit Christmas show for the Harvey County Safe House, Sun., Dec. 8, 4 p.m., Salem United Methodist Church, Newton with Heartland Ensemble. Admission by donation.

The 45th Annual Holiday Home Tour is Dec. 8. One of the homes on the tour is Goerz House with Dr. Perry and Dalene White. Karen Schlabaugh and Joan Wulf will play the Bethel Deaconess pump organ, purchased by Mrs. Warkentine and donated by Mary Claassen Franz. BCMC members Eldine Harder, Elsie Flaming and Jane Hershberger will serve as hosts. Advance reservations may be made at Prairie Harvest. Proceeds go to scholarships for instrumental music lessons.

Kidron Bethel Village Christmas Gift Market, Sat., Dec. 7, 9 a.m. to 1 p.m., Menno Hall Chapel, 3001 Ivy Drive, and employees will offer for sale their arts and crafts creations and food gifts, including peppernuts.

Today

10:30 a.m. Fellowship time with coffee served in Fellowship Hall

10:50 a.m. Christian Education for all ages – Visitors welcome!

Children and youth Sunday school classes:

- 2-3 year olds—Rm B-6; pre-K through 4th grade students—following snacks in Fellowship Hall, meet in Room B-8 for singing and story
- 5th, 6th, 7th, and 8th grade students—Rm 26
- Sr Hi Youth—Rm 22

Adult Sunday school classes:

- College students—Agape Center in Richert House, 2611 College Ave.
- Agape (Young Adults)—KIPCOR, 2515 College Ave.
- Bible Study—Rm 14—A study of *Ephesians*
- Catacombs—Rm B-5—*Dying to Live: A Migrant's Journey*, video
- Fine Arts—Rm 24—*Understanding the New Testament* video series
- Issues & Christianity—Rm 23—Discussion of issues and events
- Mosaic—Rm 20
- Open Circle—Rm B-7—Sermon reflection and response
- Seekers—Rm 21—*Reading the Bible again for the first time*, Marcus Borg
- Sojourners—Rm 28—*Journey of Paul to Greece & Rome*, Weldon Martens

Monday, December 2

3:00 p.m. BCMC worship DVD—Kidron Bethel Health Care

Tuesday, December 3

1:00 p.m. BCMC worship DVD—Kidron Bethel Assisted Living

Wednesday, December 4

8:00 a.m. Staff Meeting—Mojo's Coffee Shop, Bethel College Campus

11:00 a.m. Bethel College Messiah Sing—Sanctuary

4:30 p.m. Gifts Discernment Committee—Rm B-8

6:30 p.m. Cherub Choir (Rm 24) and Junior Choir (Rm 28)

7:00 p.m. Senior High Youth group—Room 22

7:15 p.m. Menno Ringers—Rm B-7

7:30 p.m. Chancel Choir—Sanctuary

8:30 p.m. Chancel Bells—Rm B-7

Thursday, December 5

7:00 p.m. Church Board—Rm 23

Energy Generation Planning Committee—Rm B-8

Saturday, December 7

7:30 a.m. Mennonite Men's Breakfast at Kidron Bethel Threshers Table. Bring your spouses. Program – women's quartette. Will include some Christmas music.

Sunday, December 8 – Second Sunday of Advent

9:00 a.m. Prelude by Bethel College instrumentalists

9:30 a.m. Worship with sermon by Weldon Martens; music by Chancel Choir

10:30 a.m. Fellowship time with refreshments in Fellowship Hall

10:50 a.m. Christian Education for all ages



Help outfit the new nursery! A “Nursery Shower” to raise funds for the new nursery will be Dec. 11 in the Fellowship Hall. A nursery update and refreshments will be provided! The goal is to raise \$3,000 to purchase new items for the enjoyment of parents and their young children. Contributions may be made to BCMC, designated “Nursery.” See you there!

Parents Night Out on Sat., Dec. 14 will be sponsored by the BCMC Hospitality Commission, with child-care provided for young children from 5:45 – 8:00 p.m. in Fellowship Hall.

During the Thanksgiving season, the Deacon Commission invites contributions to the above-budget Caring Fund to assist congregation and community members with needs such as utility and rent expenses, food or other emergencies. Contributions may be put in the regular offering, with checks made out to BCMC and designated “Caring Fund.”

From Janet Stucky: Thank you for your birthday greetings and remembering me in many special ways. I continue to feel so fortunate as many in Benin do not know their birth date nor are they aware what a birthday cake is. The celebration in my honor made me feel grateful for being part of a caring community and having support of the great Ministry Support Team.

The Church Board has appointed a Search Committee for the “settled” Associate Pastor for Faith Formation. They are John Esau as chair person, Bonnie Krehbiel, Josh Brubacher, Valetta Seymour, Doug Siemens and Lead Pastor Heidi Regier Kreider. Please keep these people and the search process in your prayers.

Join the Harvest of Love! This annual campaign runs Nov. – Dec., sponsored by Newton Ministerial Alliance and Salvation Army to gather non-perishable food and money to assist with needs in Harvey County. The goal is \$30,000 and 30,000 pounds of food. Make checks payable to “Harvest of Love” and send to Salvation Army at 208 W. 6th Street, Newton, KS 67114. You may also bring food items to BCMC and place them on the first pew under the balcony, near the south sanctuary entrance.



The Bible in 90 Days will be a BCMC Sunday school class to run Jan. 5 – Apr. 6, 2014, hosted by the Bible Study Sunday school class. Other individuals or

Sunday school classes are invited to join the Bible Study class in this journey through scripture! Participants will read through the Bible according to a daily schedule, with videos and discussion in Sunday school about the week’s readings, and the option to purchase additional resources. Contact the church office if you are interested in participating.

The Anabaptist Mennonite Biblical Seminary - Great Plains Extension will offer a 3-credit course "Congregational Song" (audit option) in spring semester in four weekends: Feb. 7-8, March 7-8, April 4-5, and April 25-26--with the Friday class from 6:30 - 9:30 p.m. and the Saturday class 8:30 - 4:30. Dr. Cynthia Neufeld Smith is professor; all classes will be held at Shalom Mennonite Church, Newton. Choir directors, organists/pianists, pastors, worship leaders and singers are urged to sign up by Jan. 6 (saving \$50). Register online; www.ambs.edu/forms or contact Dorothy Nickel Friesen, dnfriesen@ambs.edu; 316-283-7098, etc. 206 for information.

Give Hope on Giving Tuesday, December 3! Not sure what Giving Tuesday is? It's a day dedicated to kicking off the Christmas giving season, a reminder that Christmas is about more than buying gifts. Give a gift of hope by supporting the work of Mennonite Central Committee this Christmas season. Want to double your money? All gifts from first time donors will be matched dollar for dollar on Giving Tuesday. Donate online at mcc.org/giving-tuesday or send checks to MCC PO Box 500 Akron, PA 17501 with Giving Tuesday on the memo line.

Evening manager needed at Newton Et Cetera Shop. Qualifications: Availability 4-8 pm Mon.-Fri., communication/people skills, ability to multi-task, computer/technical skills, values in line with Mennonite Central Committee, cash register skills, bilingual or cross-cultural experience, ability to lift 25 pounds and stand 2-3 hours; college graduate preferred. Experience in advertising, design, or retailing a plus. Begins Jan. 6, 2014. To apply, email resume, job history and three professional references to newtonetc@sbcglobal.net by Dec. 16.



It's time to renew our group subscription plan to *The Mennonite* for 2014. *The Mennonite*, monthly magazine for Mennonite Church USA, has articles that challenge and inspire, news that connects readers to the larger Mennonite community, and more. If you are interested in joining our group plan, fill out this form; attach payment of \$37.00, made out to BCMC with “*The Mennonite* subscription” in the memo line. **Place this form, along with your payment, in the offering plate or bring to the church office no later than Sunday, December 15.**

✂.....
I am subscribing to *The Mennonite* through the BCMC group plan
 Name _____